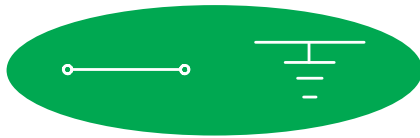


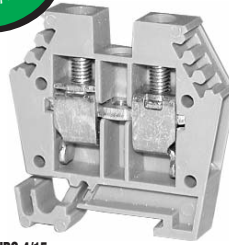
# Mini Terminal Blocks



Mini terminal blocks are used in areas with extremely limited space requirements, and mount on the smaller DIN rail type DN-R15S1.

10 AWG

DN-M10  
Series: EURO 4/15

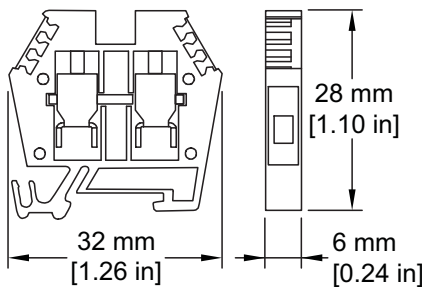


GROUND

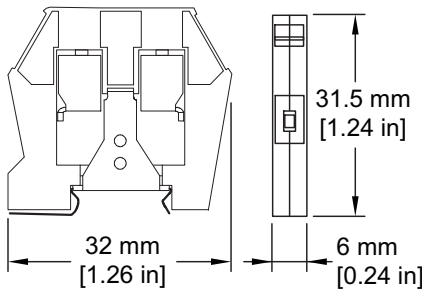
DN-MG10  
Series: EURO E4/15



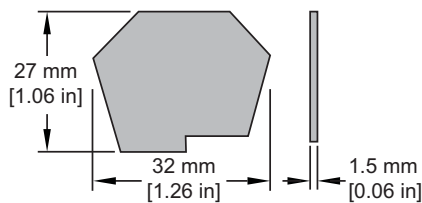
## DN-M10



## DN-MG10



DN-ECM10  
DN-ECM10MN



	Part #	Pcs/Pkg	Price/Pkg	Part #	Pcs/Pkg	Price/Pkg
<b>Gray Term Block</b>	DN-M10	100	<--->	-	-	-
<b>Blue Term Block</b>	DN-M10B	100	<--->	-	-	-
Mini Terminal Blocks Specifications						
<b>Green/Yellow Block</b>	-	-	-	DN-MG10	20	<--->
<b>UL Approval*</b>	300V	30A	24-10AWG	-	-	18-10AWG
<b>CSA Approval</b>	300V	25A	18-12 AWG	-	-	18-10AWG
<b>VDE Approval</b>	400V	35A	4mm <sup>2</sup>	-	-	4mm <sup>2</sup>
<b>CE Conformity</b>	CE 23/20, CE 23/21			CE 23/20, CE 23/21		
<b>Agency File #</b>	E179129, LR84816			E179129, LR84816		
<b>Wire Strip Length</b>	0.39" (10mm)			0.39" (10mm)		
<b>Tightening Torque</b>	5.5 lb-in. (0.6Nm)			5.5 lb-in. (0.6Nm)		
<b>Density</b>	43 pcs./ft. (142/m)			50 pcs./ft. (166/m)		
<b>Operating Temperature</b>	Ambient air temperature: -13°F to 104°F (-25°C to 40°C) Relative humidity: 50% max at 104°F (40°C); 90% max at 68°F (20°C)					
<i>*Note: For copper wire only</i>						

Accessories						
	Part #	Pcs/Pkg	Price/Pkg	Part #	Pcs/Pkg	Price/Pkg
<b>DIN Rail (15 mm)</b>	DN-R15S1				10	<--->
<b>End Bracket</b>	DN-EB15	100	<--->	-	-	-
	DN-EB15MN	20	<--->	-	-	-
<b>End Cover</b>	DN-ECM10	100	<--->	-	-	-
	DN-ECM10MN	25	<--->	-	-	-
<b>Jumpers</b>	<b>/ 2 Pole</b>	DN-2JM10	100	<--->	-	-
	<b>/ 3 Pole</b>	DN-3JM10	100	<--->	-	-
	<b>/ 4 Pole</b>	DN-4JM10	100	<--->	-	-
	<b>/ Multi-pole</b>	DN-82JM10 82 pole	1	<--->	-	-
<b>Marking Tags</b>	DN-LT series				100	<--->
<b>Angled Support Bracket</b>	DN-ASB1	50	<--->	DN-ASB1	50	<--->
<b>Top Cover</b>	DN-MC10	100	<--->	-	-	-

For more information on accessories, see the "DINnectors Accessories" section of this chapter.

- Company Info.
- PLCs
- Field I/O
- Software
- C-more & other HMI
- AC Drives
- AC Motors
- Power Transmiss.
- Steppers/ Servos
- Motor Controls
- Proximity Sensors
- Photo Sensors
- Limit Switches
- Encoders
- Current Sensors
- Pressure Sensors
- Temp. Sensors
- Pushbuttons/ Lights
- Process
- Relays/ Timers
- Comm.
- Terminal Blocks & Wiring
- Power
- Circuit Protection
- Enclosures
- Tools
- Pneumatics
- Appendix
- Part Index