



THE MOST PRACTICAL PLC TOUCH PANELS AVAILABLE!

6" mono STN



Mono

EZ-S6M-R

- 256K memory (non-expandable)
- All serial drivers

EZ-S6M-F

- 512K (expandable to 1MB memory)
- All serial drivers; accepts optional Ethernet card

NEW!

EZ-S6M-FH

- Same as EZ-S6M-F, but includes pre-installed Allen-Bradley Data Highway Plus interface card



6" mono STN slim bezel

EZ-S6M-RS

- Slim bezel version of EZ-S6M-R, with 48 touchcells and FDA-approved materials

EZ-S6M-FS

- Slim bezel version of EZ-S6M-F, with 192 touch cells and FDA-approved materials

EZ-S6M-FSH

- Slim bezel version of EZ-S6M-FS, but includes pre-installed Allen-Bradley Data Highway Plus interface card

6" Color STN



Color

EZ-S6C-K

- 512K (expandable to 1MB memory)
- Supports **AutomationDirect** PLC drivers only, a special value for our **DirectLOGIC** customers

EZ-S6C-F

- 512K (expandable to 1MB memory)
- All serial drivers, accepts optional Ethernet card

NEW!

EZ-S6C-FH

- Same as EZ-S6C-F, but includes pre-installed Allen-Bradley Data Highway Plus interface card



6" Color STN Slim Bezel

EZ-S6C-KS

- Slim bezel version of EZ-S6C-K, with 192 touchcells and FDA-approved materials

EZ-S6C-FS

- Slim bezel version of EZ-S6C-F, with 192 touch cells and FDA-approved materials

EZ-S6C-FSH

- Slim bezel version of EZ-S6C-FS, but includes pre-installed Allen-Bradley Data Highway Plus interface card

8" color STN



EZ-S8C-F

- 512K (expandable to 1MB memory)
- All serial drivers, accepts optional Ethernet card
- Uses a lower NIT (brightness) rating display to keep the cost super low
- Good for applications that are extremely cost conscious, but need a larger (full VGA, 640 x 480) screen

NEW!

EZ-S8C-FH

- Same as EZ-S8C-F, but includes pre-installed Allen-Bradley Data Highway Plus interface card



10" color TFT

EZ-T10C-F

- 512K (expandable to 1MB memory)
- All serial drivers, accepts optional Ethernet card
- Exceptional screen quality and brightness at an incredible value (full VGA, 640 x 480)

NEW!

EZ-T10C-FH

- Same as EZ-T10C-F, but includes pre-installed Allen-Bradley Data Highway Plus interface card



The EZTouch touch panel products shown here are a result of much engineering effort. Check out the hardware and configuration software features and we think you'll agree that these products are the most practical touch panels available!

Key features

- Incredible 3-D graphical objects: pushbuttons, numeric entry, meters, line graphs, PID faceplates, etc. All are high-speed, vector-based objects with amazing scalability.
- 128 colors for use in objects and graphics
- Display text in up to nine different languages (user-selected by the push of a button!)
- Built-in Symbol Factory™ with over 2,000 symbols
- Screen and object password protection (eight user-defined levels)
- Unmatched alarm capability with history, count and details
- Recipe downloads to the PLC: 20 values into 20 registers (fixed or variable)
- Floating-point numbers to and from PLC
- Built-in clock and calendar
- Forty-character tagnames mapped to PLC addresses
- Optional 512 K or 1 MB flash memory cartridge for non-volatile program storage and distribution
- Expandable RAM memory cartridge for up to a total of 1 MB

PLC serial drivers supported

- Allen-Bradley DF1 (PLC-5, SLC 500, MicroLogix 1000, 1200 and 1500), DH485, A-B remote I/O
- Modicon MODBUS RTU
- GE Fanuc SNPX (90/30, 90/70)
- All Mitsubishi FX Series
- Omron Host Link (C200 and C500)
- Siemens S7 MPI Adapter series PLCs
- Allen-Bradley Data Highway Plus on units supplied with DHPlus interface card
- All **AutomationDirect** DirectLogic PLCs.

Options

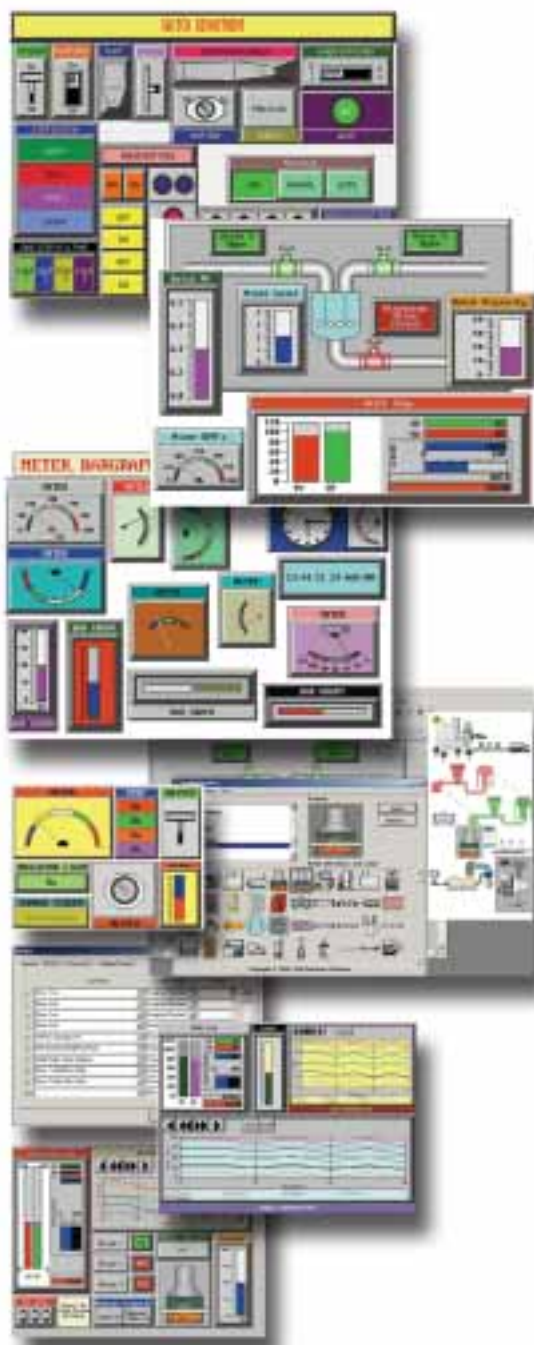
- Easily-installed 512 K or 1 MB flash memory cartridge, great for non-volatile program storage in order to transport programs
- High-speed Ethernet communication card (check for availability)

Configuration software

The EZTouch software makes panel configuration and testing simple. Easy-to-use Windows-based menus and toolbars lead you through building a project. Run-time (online) editing makes debugging fast.



BETTER GRAPHICS, BETTER RESULTS



or 16 colors. We give you 128 colors so you'll see the difference. We also have a built-in symbol library of over 2,000 symbols including pumps, valves, etc. These symbols allow you to create extremely informative screens.

Our objects offer the best scalability

All of our user-created objects are built in vector graphics. This allows objects to be cleanly scaled to virtually any size. Vector graphics are crisp, fast and use less memory. Most other touch screen products use bitmaps, which are typically easier to design for the manufacturer, but don't give you the same benefits that vectors do. Standard memory in bitmap products must be enlarged to handle less efficient objects.

We packed our EZTouch panels with powerful graphical features that can be used to convert PLC data into powerful operator information. Check out a few of our favorite features:

Powerful trend graphs tell a story

Operators will love seeing how certain process variables change over time by looking at our informative trend graphs objects. Intuitive, fill-in-the-blank configuration allows you to select up to six recording pens. Trends keep up to 999 data points and can be collected by seconds, minutes, hours or days! You can even back up and see previous data.

Insightful PID faceplates

Drop in a PID faceplate to quickly view your setpoint and process variable. Put the PID faceplate next to a trend graph for incredibly informative temperature control!

New! multi-state indicators

New indicators allow you to show various states or conditions of a process by setting a bit or by selecting a message number. You also have the option to print a called message that can include embedded variable data, and display it as an indicator light or message.

Powerful alarm reporting

Three types of alarm reports are available with EZTouch. If an alarm is triggered by the PLC (low level, high level, limit switch, etc.), a pre-configured alarm button can automatically pop up on the screen. Once activated, alarms will be automatically displayed at the bottom of the current screen. The operator can then press a pre-configured alarm button to view alarm history, alarm counts (the number of times each alarm has been set) and specific alarm details.

Recipe download button

Up to 20 values stored in the memory of the EZTouch panel or in PLC registers can be downloaded into the variable memory of the connected PLC by pressing a pre-configured recipe button. This allows an operator with proper password protection to modify PLC parameters on the fly. By adding numeric entry objects, you can now modify the recipe values onscreen.

128 colors and symbol library

Many touch panels limit your switches, graphs, text, etc. to eight

EVEN OUR COMMUNICATIONS ARE PRACTICAL!

No brainer cables connect to many PLCs

We offer low cost molded cables to connect your EZTouch panels to most of the PLCs supported. We had these cables custom-designed to make it easy to attach our touch panel!

Program online

EZTouch panels have both a PLC communication port and a programming port. This allows you to configure the EZTouch while it is connected online to a PLC. Since you'll see your edited changes almost instantaneously, startup time will be greatly reduced! With EZTouch, you won't spend your time swapping cables.

Attach multiple EZTouch panels to our PLCs

All of our PLC families support EZTouch panels. Our DL05, DL06, DL205, DL305 and DL405 families also have multiple communication ports, each of which can support an EZTouch panel. If you need more panels, just add extra ports to the DL205 or DL405 family PLCs by installing data communication modules.

Connect EZTouch to a Data Highway Plus network

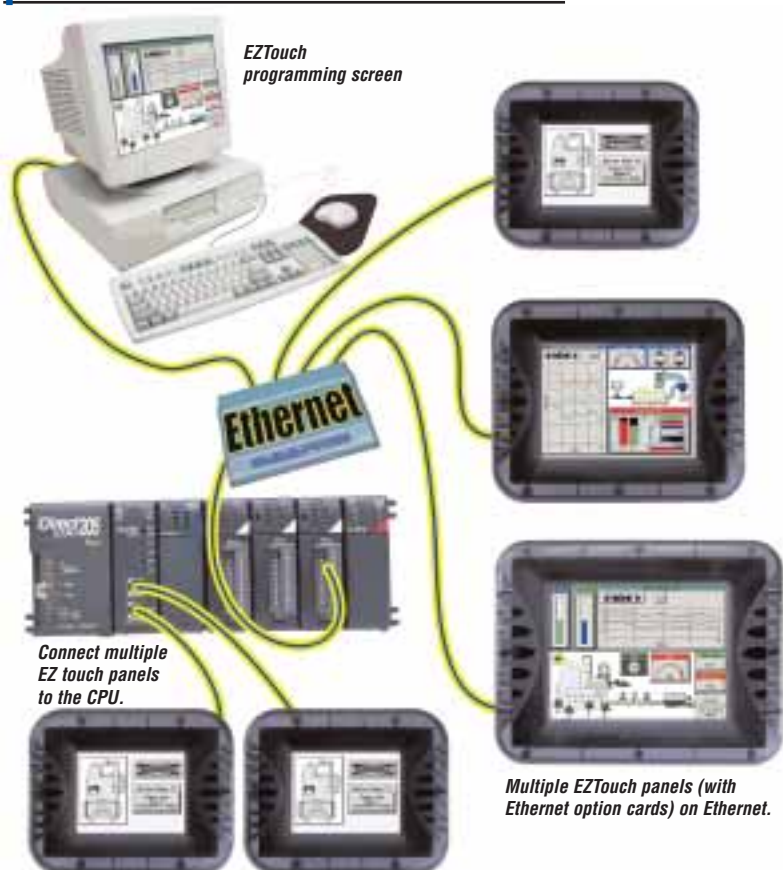
Many EZTouch models are available with an installed option card to connect to your Allen-Bradley Data Highway Plus network.

Ethernet for high speed and flexibility

Our touch panels are fast, but they are limited by the speed of the PLC serial communication port, which is often 19.2K or 38.4K. Fortunately, some of our PLCs offer 10Mbaud Ethernet communications through an optional communication module. An optional Ethernet-enabled card can be installed in the EZTouch panels to communicate to these products. Our Ethernet communication products (EZTouch panels, PLCs, variable frequency drives, Think & Do software), combined with off-the-shelf Ethernet hubs, allow you to create an infinite number of system configurations to serve your needs.



Program DL205 and EZTouch panels over Ethernet network





EZTouch PANELS OVERVIEW



Introduction

The EZTouch line of operator interface touch panels is one of the most powerful yet easy to use in the industry. The touch panels provide a graphical interface designed to interchange and display graphical data from a PLC by merely touching the screen. You could virtually replace every pushbutton, switch, meter, and other peripheral device with one EZTouch panel. The configuration software makes these touch panels very easy to set up and program.

Overview

EZTouch panels are fully programmable and provide power and flexibility through a vast set of features. The displays are available in either monochrome (16 gray shades) or full color. Mono displays are only available with a 6" screen. The color units are available in 6", 8", or 10" versions. See the table to the right for part numbers and descriptions.

Getting started

Installing the software and configuring the EZTouch panel is simple to do. You will only need the following items to successfully connect and configure the panel:

- EZTouch Panel
- 24 VDC power supply (min. 1.2A, switching)
- Programming cable
- PLC interface cable
- PC
- EZTouch Programming Software

Available models

The table below provides all of the current models available. For more detailed EZ Touch information, see the specifications chart later in this section.

Part Number	Description
EZ-S6M-F	6" monochrome touch panel
EZ-S6M-FS	6" slim bezel monochrome touch panel
EZ-S6M-R	6" monochrome touch panel (not expandable)
EZ-S6M-RS	6" monochrome touch panel slim bezel (not expandable)
EZ-S6C-K	6" color touch panel (Koyo serial drivers only)
EZ-S6C-KS	6" color slim bezel touch panel (Koyo serial drivers only)
EZ-S6C-F	6" color touch panel
EZ-S6C-FS	6" color slim bezel touch panel
EZ-S8C-F	8" color touch panel
EZ-T10C-F	10" color touch panel
EZ-S6M-FH	6" monochrome touch panel with built-in Data Highway Plus interface
EZ-S6M-FSH	6" slim bezel monochrome touch panel with built-in Data Highway Plus interface
EZ-S6C-FH	6" color touch panel with built-in Data Highway Plus interface
EZ-S6C-FSH	6" color slim bezel touch panel with built-in Data Highway Plus interface
EZ-S8C-FH	8" color touch panel with built-in Data Highway Plus interface
EZ-S10C-FH	10" color touch panel with built-in Data Highway Plus interface

Features

- Pre-built panel components for easy screen design
- Screen Objects, such as Pushbutton, Slide Switch, Selector Switch, Throw Switch, Thumbwheel Switch, Meters, PID Faceplates, Analog/Digital Clock, Dynamic Bitmaps, Multi-state Bitmaps, Line Graphs, Bar Graphs, etc.
- Flash memory-based design for easy firmware upgrades
- Field expandable user RAM
- Optional non-volatile flash memory card for user program backup
- Color models support 128 colors
- 16 shades of gray on monochrome models
- Multiple languages (up to 9)
- Two communication ports
- Up to 999 screens, depending on complexity
- Built-in clock and calendar
- Built-in soft keypad for numeric and alphanumeric entry
- Password protection for every touch object
- Passwords for up to 8 user groups
- 16 levels of undo and redo
- Import bitmaps
- 40-character tag names



EZTOUCH PANEL OVERVIEW

Compatibility

A great feature of the EZTouch panel is its connectivity to many different PLC types. In addition to **Direct**LOGIC PLCs, if you are using certain Allen-Bradley, GE, Mitsubishi, Omron, Modicon, or Siemens PLCs, you will have no problems connecting the EZTouch panel. Please refer to the table on this page to verify that your PLC is supported.

Networking

The EZTouch panels can also communicate via various types of networking protocols using the applicable network card. The networks currently supported are as follows:

- Ethernet (EZ-ETHERNET)
- Data Highway Plus

The Ethernet network card is purchased separately, while the DH+ model is ordered as a complete unit. Please see the Accessories table in this section for applicable part numbers.

Easy installation

There are three basic steps to installing an EZTouch panel:

1. Mounting
2. Connections and wiring
3. Communications setup

Mounting

The EZTouch panel is a front-panel mount unit. Mounting requires a panel cutout and, either drilling holes for mounting screws, or the installation of add-on DIN clips to secure the panel to the mounting area. Refer to the dimensions and installation section for complete information.

Connections and wiring

Once the EZTouch panel is mounted, you can select the PLC protocol type and connect the unit. Refer to the wiring and connections section for a complete description of the EZTouch panel ports and available cables.

Communications setup

The EZTouch panel has user-defined communication settings. The panel is shipped with default parameters. Verify that the settings match your needs.

PLC Compatibility Table

PLC	Model		Protocols
Allen-Bradley	MicroLogix 1000/1200/1500, SLC 500, 5/01, /02, /03		DH485
	MicroLogix 1000, 1200 and 1500 SLC 5/03, /04, /05, PLC-5 (w/DF1)		DF1
GE	90/30 and 90/70 Versa Max		SNPX
Mitsubishi	FX Series (all)		Direct, Multidrop
Omron	C200, C500		Host Link
Siemens	S7 300/400 PLCs, MPI Adapter		3964R protocol
DirectLOGIC	DL05		K-Sequence
			Direct Net
			Modbus (Koyo addressing)
	DL105		K-Sequence
	DL205	D2-230	K-Sequence
		D2-240	K-Sequence
			Direct Net
		D2-250	K-Sequence
			Direct Net
			Modbus (Koyo addressing)
		D2-240/250 DCM	Direct Net
	DL305	D3-330/330P	Direct Net
		D3-340	Direct Net
			K-Sequence
		D3-350	Direct Net
			Modbus (Koyo addressing)
		D3-350 DCM	Direct Net
	DL405	D4-430	K-Sequence
			Direct Net
		D4-440	K-Sequence
			Direct Net
		D4-450	K-Sequence
			Direct Net
			Modbus (Koyo addressing)
		All with DCM	Direct Net
	H2-WinPLC		Modbus RTU (serial port)
	H2/H4 EBC, T1H-EBC		K-Sequence (serial port)
	H2-WinPLC/EBC w/Ethernet Card option		Ethernet



WHAT'S NEW

NEW! 6" slim bezel panels

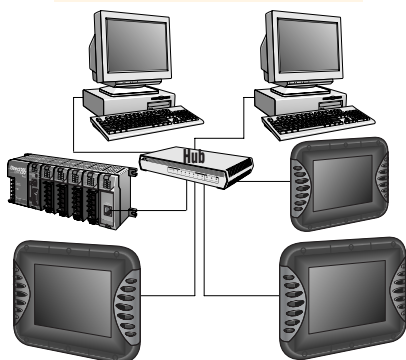


The latest addition to the EZTouch panel product line features a more compact front bezel, occupying a smaller area on your enclosure. The new slim bezel panels are mounted only by DIN clips and do not have mounting studs, but they do have a large 1/8" gasket to provide an excellent seal (NEMA 4/4X, indoor only). They also feature 192 touch cells (on all but the EZ-S6M-RS, which has 48 as do all standard 6" panels). And they have FDA-compliant material on all exposed areas (bezel, touch-screen, and gasket).

NEW! EZTouch Ethernet card

Now you can connect multiple EZTouch panels to multiple PLCs via the new EZTouch Ethernet option card.

PC connected to network can perform On-line programming on any of the panels connected.



NEW! EZTouch Software Version 2.0

EZTouch Software (EZ-TOUCHEDIT) has been upgraded to include many new features that customers have requested.



New features in Version 2.0

- Bitmaps can now be sized on the screen in the EZTouch Software
- Import/export tags to/from Excel or CSV files
- Export messages to Excel or CSV file
- Export alarms to Excel or CSV file
- Multi-state Bitmap object (bit or word selectable)
- Multi-state Indicator/Message object (bit or word selectable) allows up to four embedded data variables in messages
- Bitmap Button object
- Meters and bar graphs now scalable
- Floating point support for Meters, Bar Graphs, PID and Line Graphs
- 3-D frames are user-selectable
- Alarms can now be password protected
- New screen list for even easier navigation
- Zoom in and out to design screens
- Set a default tag data type
- Alarm counts retained on power cycle

NEW! panels with built-in Data Highway Plus Interface Card

The new DH+ network card comes pre-installed in any panel that has a part number ending with 'H'.

SPECIFYING YOUR EZTOUCH PANEL

Four steps to specifying your EZTouch Panel

Step 1: Determine size

Determine the size touch panel you need (6", 8" or 10").

Step 2: Choose display

Choose the display type desired (color or monochrome, TFT or STN).

Step 3: Select bezel/touch cells

Select the bezel style (slim vs. standard) and number of touch cells.

Step 4: Determine memory and PLC type/option card

Decide how much memory is needed and which PLC you will connect to.

Approximate memory usage

- 250 screens with 256KB (EZ-S6M-R)
- 500 screens with 512KB (all other models)
- 1000 screens with 1MB (add 512K RAM Card, EZ-RAM-1, for 1MB total)

Part number convention

Display

S: STN
T: TFT

Size

6: 6"
8: 8"
10: 10"

Display

C: Color
M: Mono

...

Option card

H: Data Highway Plus network card installed (must be -F panel)

Bezel/touch cells

S: Slim Bezel*
<none>: Original Bezel (standard)

Memory/PLC

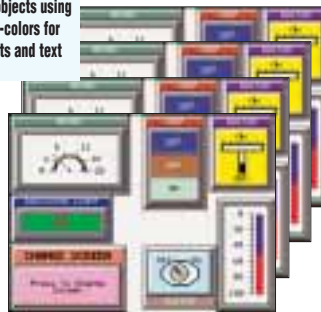
F: Full (all drivers, expandable to 1MB RAM)
K: Koyo and Think & Do drivers only, exp. to 1MB RAM
R: Reduced (256KB RAM, not expandable)

* Slim bezel option is currently only available in 6" panels. All slim bezel panels have 192 touch cells (12x16), except the EZ-S6M-RS, which has 48 (6x8).

Multiple screens and memory

The EZTouch panels can support up to 999 screens. The actual number is dependent on the amount of memory and the complexity of the program and screens. The examples here show typical screens with different amounts of memory.

Basic objects using multi-colors for objects and text



Up to 999 screens similar to this with 1MB memory

Basic objects using mono-chrome shades



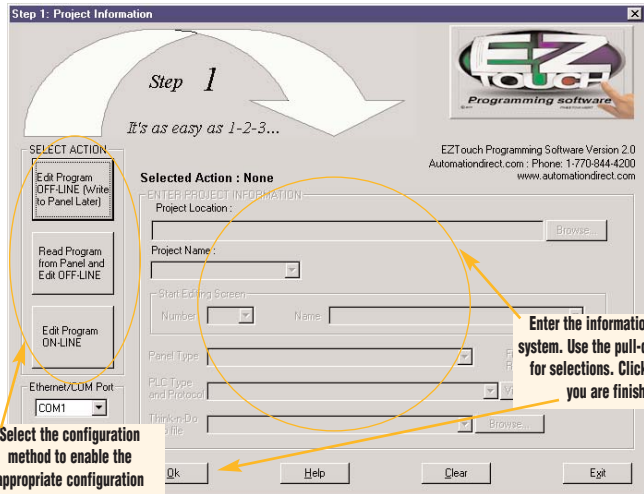
Up to 475 screens similar to this with 256K memory

EZTouch PANEL SOFTWARE EXAMPLE

It's as easy as 1 2 3 to write an object to the EZTouch Panel

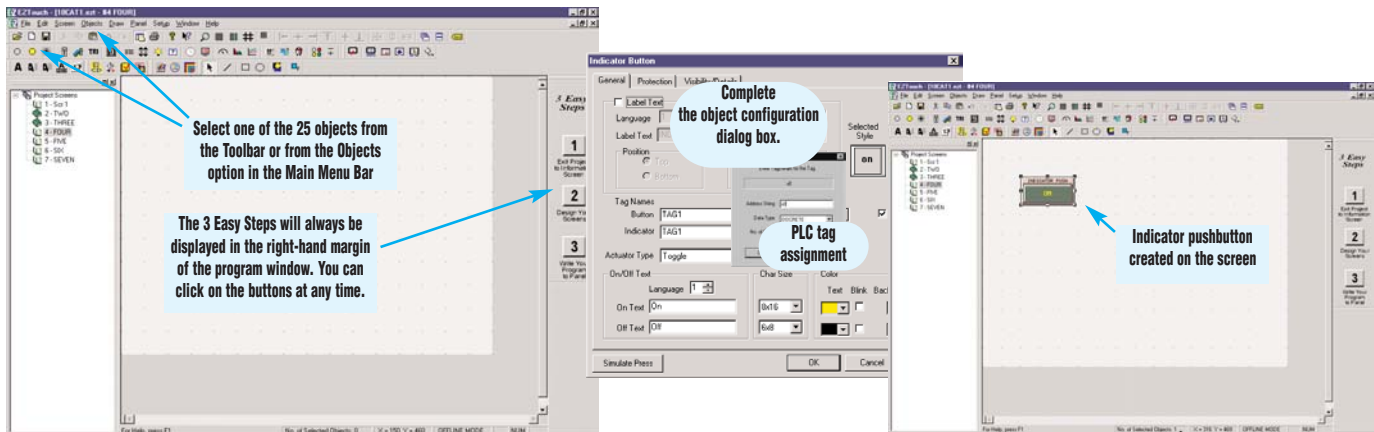
1

Start the EZTouch Programming Software. The initial screen provides several choices for creating and opening projects. First, choose which configuration mode you want to use: Edit Offline, Read from Panel, or Edit Online. Once you choose the configuration mode, you can enter all of your system parameters by typing in the fields or using the pull-down menus.



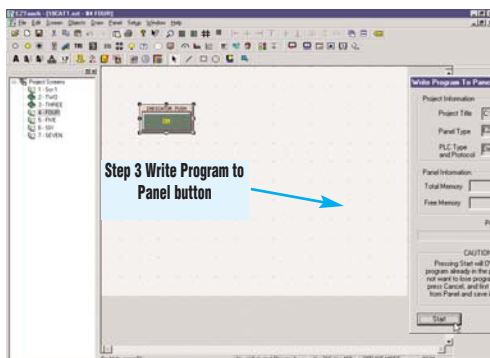
2

Once your new screen is open, you can start building and creating objects using the easy menu or toolbars.



3

Click on the "Write Program to Panel" button, double check the download dialog box, click OK, and you are finished.





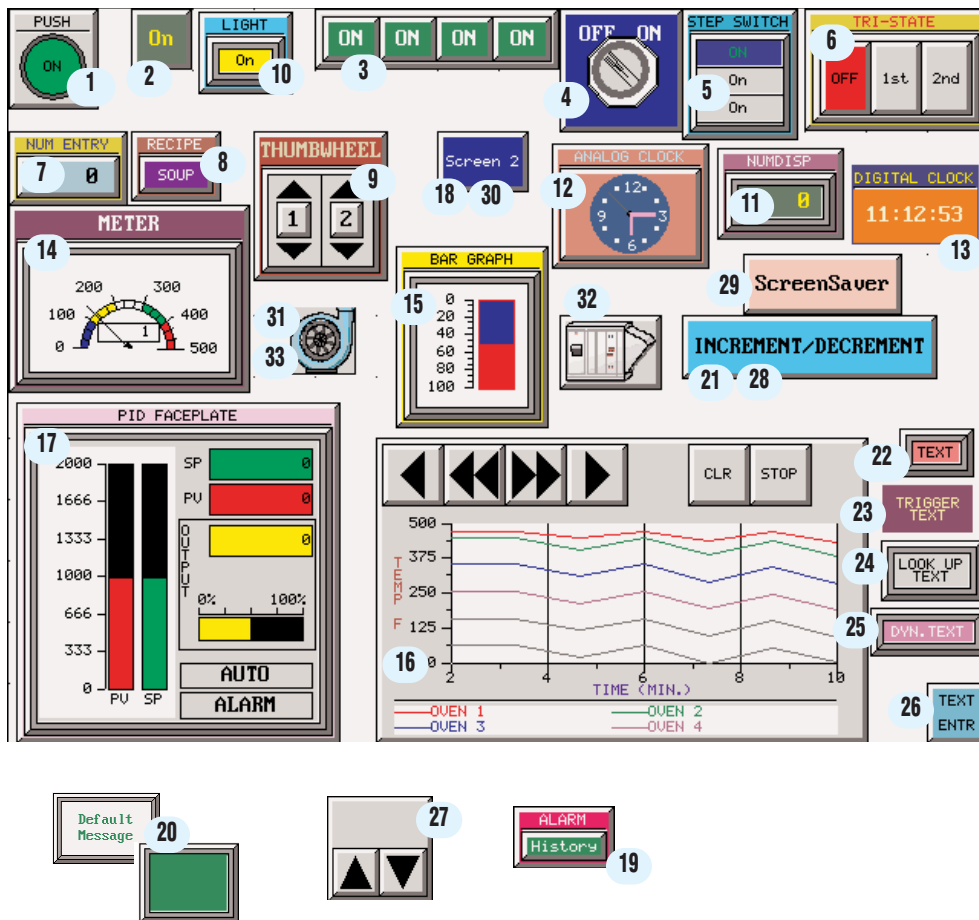
EZTouch PANEL OBJECTS

The most practical and best-looking objects available

The image below shows a screen containing many of the 33 available objects. This page and the facing page cover some of the featured objects available in the EZTouch program.

Radio Buttons 3

The Radio Button object allows you to create a series of pushbuttons (2-8) that function similar to a pushbutton car radio. When one button is active, the others are off (only one station at a time).



- 1 Pushbutton
- 2 Indicator Button
- 3 Radio Button
- 4 Switch
- 5 Step Switch
- 6 Tri-State Switch
- 7 Numeric Entry
- 8 Recipe
- 9 Thumbwheel
- 10 Indicator Light
- 11 Numeric Display
- 12 Analog Clock
- 13 Digital Clock
- 14 Meter
- 15 Bar Graph
- 16 Line Graph
- 17 PID Faceplate
- 18 Screen Change
- 19 Alarm History
- 20 Multi-state Indicator
- 21 Increment/Decrement
- 22 Static Text
- 23 Trigger Text
- 24 Lookup Text
- 25 Dynamic Text
- 26 Text Entry
- 27 Adjust Contrast
- 28 Inc/Dec Hour
- 29 Activate Screen Save
- 30 Select Language
- 31 Dynamic Bitmap
- 32 Bitmap Button
- 33 Multi-state Bitmap

Meters 14

The Meter object gives you multiple choices for meter type and operation. You can custom design the color bars for the alarm zones and select the number of ticks to be displayed. The meters are an excellent graphical representation for an analog gauge.

Line and Bar Graphs 17 16

The line and bar graphs have unbelievable resolution. The charts have the ability to display a legend for your X and Y axis. You can also assign a label to the major "tic" marks on the chart. Add a little color and the graphs look as good as they function.

PID Faceplate 17

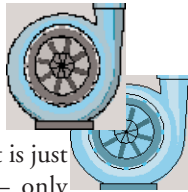
For those PLC systems that support PID capabilities, there is a special faceplate to display the PID parameters. The PID object reads three controlled values of the PID loop and displays them in a bar graph form.

EZTouch PANEL OBJECTS

Bitmap Objects (Dynamic, Multi-state, Button, and Static) 22

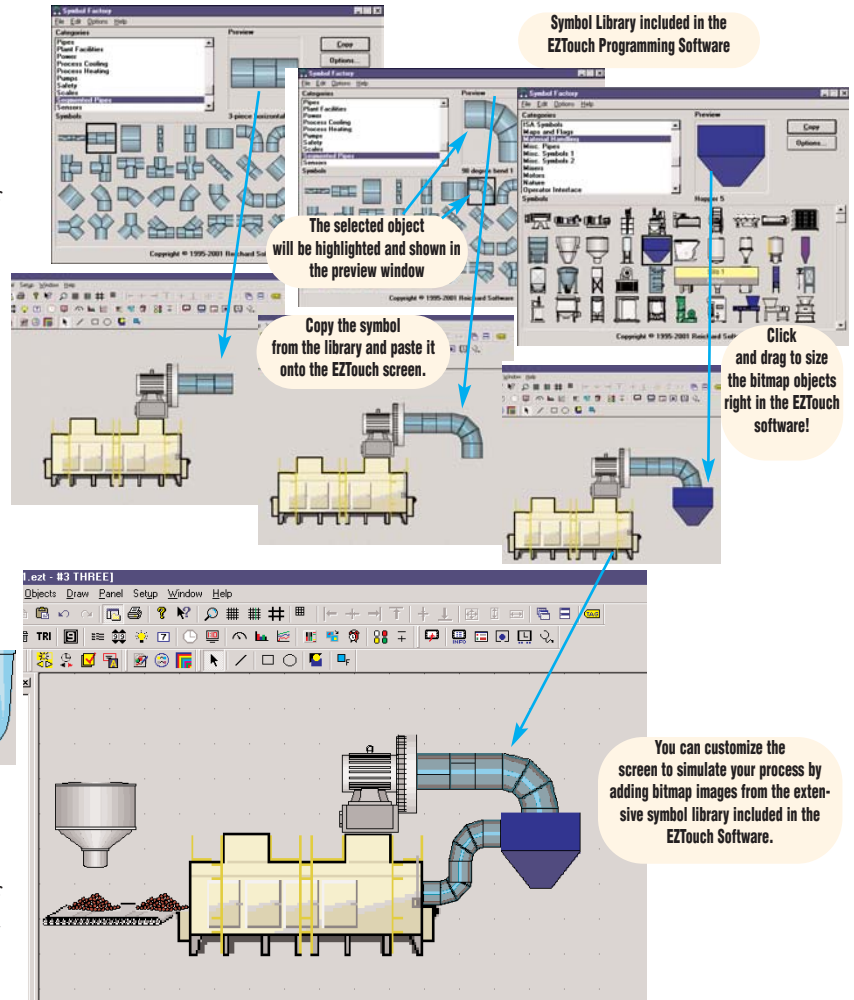
The Dynamic Bitmap and Multi-state Bitmap objects allow you to create simple to complex objects. You can use the extensive built-in symbol library to copy and paste hundreds of objects directly to the project screen. They can be arranged and positioned in any manner that you prefer.

The Dynamic Bitmap allows you to create and stack objects on top of each other for a true dynamic representation. The bitmap that is activated by the panel or by the control program will be the one that is active or on top. For example, you could create a green blower and a red blower and stack them on top of each other as shown below. If the process is running and the blower is in operation, the green one would be shown. If it was off, the red one would be shown.



The Multi-state Bitmap object is just like the Dynamic Bitmap — only more powerful, and with up to 16 bitmaps to display, based on bit of word or word address.

The Bitmap Button object is just that — a pushbutton with On/Off images instead of colors and text, and the Static Bitmap is simply an imported bitmap that can be sized but remains static.

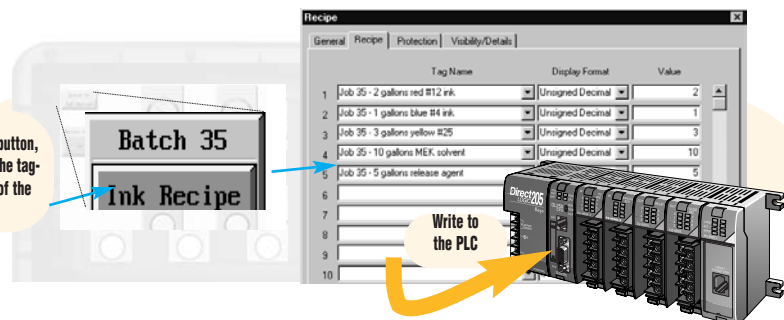


Open. Int.

Recipe Objects 8

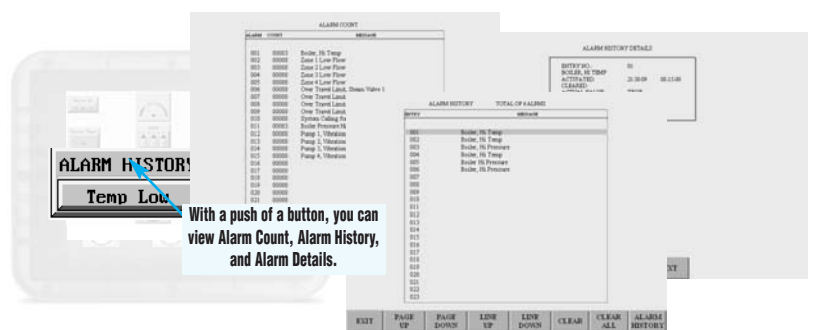
The Recipe object allows you to write preset values (or PLC register values) of up to 20 registers in the EZTouch panel with the click of a button. These values may be transferred from the panel registers to the PLC to change the process.

With one click of a button, you can view all of the tag-names and values of the recipe batch.



Alarm History 24

You can configure an Alarm History button to provide Alarm Count or Alarm History. Alarm Details are accessed through the Alarm History. The Alarm Count will list all alarms and show a total count for each alarm. The Alarm History will show each alarm that has occurred with the most recent at the top. When you highlight and select Alarm Detail you will get the date, time, current value, upper/lower limits, and which limit is tripped.





EZTouch CONFIGURATION SOFTWARE

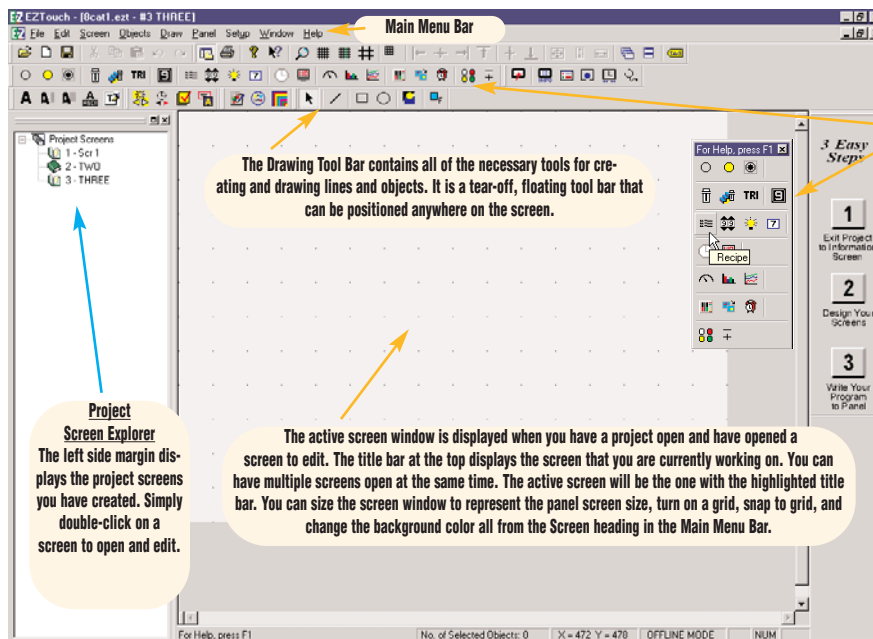
Easy-to-use programming software

The EZTouch Programming Software makes the configuration process simple and easy. The previous two pages described all of the powerful objects available in the program. These two pages illustrate the ease and simplicity of creating and building these objects.

The EZTouch Programming Software has a Main Menu Bar, tear-off toolbars, a Project Screen Explorer, a main window area, and individual screen windows. You can build multiple screens and tile or cascade them in the main window area.

Toolbars

There are nine Toolbars to help simplify your programming process (Standard, Basic Objects, System Objects, Text Objects, Bitmap Objects, Draw, Panel, 3 Easy Steps, and Project Screens). The Toolbars are tear-off, which means that you can move and resize them to better suit your needs. The example here shows the Basic Objects Toolbar moved to the right and resized. It also shows the Fly-over help or ToolTip that is associated with each object icon. You can display the Panel tool bar by selecting it in the Edit pull-down selection. This Toolbar provides the icons for the following: write to panel, panel information, display screen, reboot panel, panel time and date, and diagnostics.



Minimum PC requirements:

- Pentium, 133MHz, CD ROM
- 32MB RAM
- 11 MB free disk space
- WIN95/98/2000/NT4.0
- Color SVGA
800x600 minimum
1024x768 recommended

Online programming

The EZTouch panels support full-scale online programming. You will be able to view the project that is in the panel, edit it while it is online, then save it to the panel.

To give you a quick explanation of the benefit of this feature, let's compare it to offline programming. Typically, when you build a project, it is saved both on your PC and the panel. To make changes to the program in the panel, you would have to open the saved file on your PC, make the changes, save the changes, and transfer to the panel. In the EZTouch Programming Software, you can be connected online with a simple click of a button. Once you are connected, the screen that you see on the panel is the screen you see on the PC. Now when you save the changes to the program, they will be made directly to the panel.

Windows architecture

The EZTouch Programming Software is a true 32-bit Windows-type application. There are pull-down menus on every Main Menu Bar heading, some of which provide more menu options or dialog boxes for configuration. Most icons have the fly-over ToolTip that is associated with the 32-bit architecture. When your cursor is on top of an icon, a brief description or hot key is displayed in a small pop-up cloud. This type of information may be helpful in choosing which object or selection that you need to make. Also, like other Windows-type applications, you can tile or cascade multiple screens in the main display window and minimize and maximize them as well. We think you will be pleased with the ease and simplicity these features provide.

EZTouch CONFIGURATION SOFTWARE

Typical object configuration dialog box

Indicator Button Object

A Using the tool bar or pull-down menu, select the object that you want to create.

B Each object has an associated dialog containing all of the necessary parameters for creating the object. Simply fill in the areas to meet your application needs and click OK. The object can now be drawn on the screen.

You can custom label the objects by enabling the text and typing in the name you want.

Most of the objects have a style selection of how the object will appear on the screen.

C Object is drawn on the screen

Display Frame

No Frame

PLC addressing

One of the fields to be completed in the object creation window is the PLC tagname. Type in the tagname and the appropriate PLC address string and data type, and the object will be linked to the PLC. It's that easy!

ADD NEW TAG DETAILS

Enter TagDetails for the Tag

(PicoType: DirectLogic K-Sequence - Rev B)

Address String: C0

Expected ID Type: R/W

Data Type: DISCRETE

No. of Chars: 10

OK Cancel Help

Password protection

Most functional objects have password protection built-in for up to eight different user groups. Simply choose the group or level of protection and enter the password.

Color palette

The color palette has 128 available colors for text, background, indicators, and other object parameters.

Se Habla Español? No hay Problema!

Another great feature of the EZTouch panels is the ability to program your text and messages in different languages. As long as the text characters are in the ASCII text table, they can be displayed on the panel. You can store up to nine different language types for each object. Select the language number from the pull-down menu and type in the text to be displayed.

Si usted prefiere que sus mensajes se visualicen en Español, simplemente seleccione el número de el lenguaje que desea y escribalo en su texto para cada función.

On/Off Text

Language: 2

On Text: Valvula 1 prendido

Off Text: Valvula 1 apagado

O, se ha qualche operatore che preferisce l'italiano, scriva il test in una forma più comprensibile per loro.

On/Off Text

Language: 3

On Text: Valvola 1 accesa

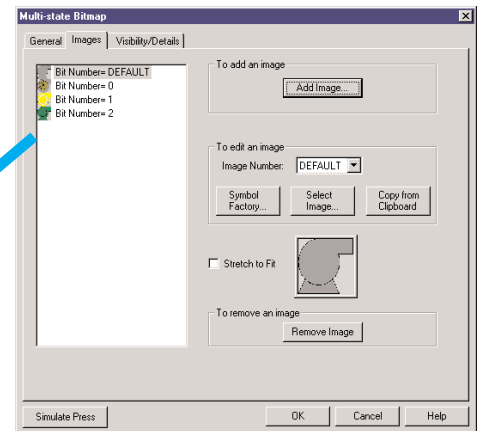
Off Text: Valvola 1 spenta



EZTouch CONFIGURATION SOFTWARE

NEW! Multi-state Bitmap Object

The new Multi-state Bitmap Object is created to display images within a frame on the EZTouch panel screen. Each object has its own programmed images. The object will display one image at a time based on a bit (the one that is set), or a value in the tag. The maximum number of images that can be programmed is based on available memory.



Default bitmap

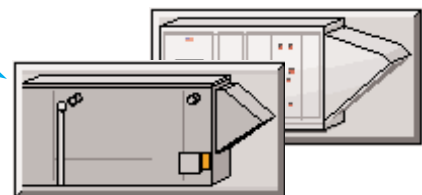
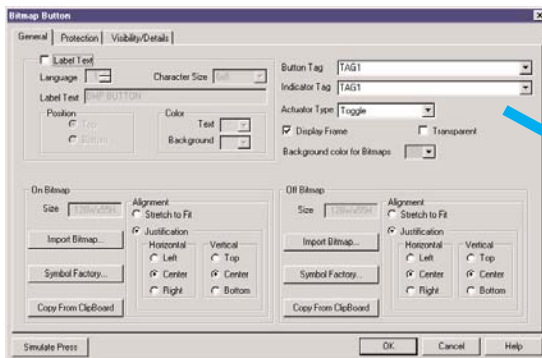
Bitmap of bit 0

Bitmap of bit 1

Bitmap of bit 2

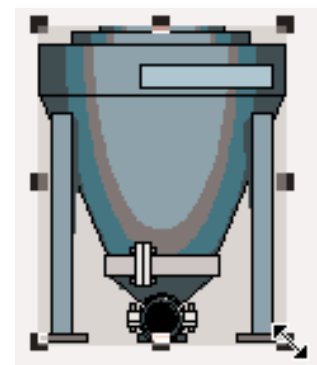
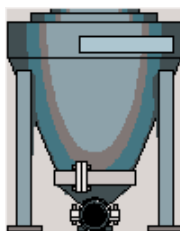
Bitmap Button Object

The new Multi-state Bitmap is a touch object that combines functions of a button, a Dynamic Bitmap, and an Indicator Light. It allows you to perform a WRITE operation to one bit and a READ operation from a second discrete location. The state of that READ location determines whether the button is displayed in the ON or OFF mode. You may choose to make the READ and WRITE location the same.



NEW! Sizing bitmap objects

EZTouch 2.0 software allows bitmap objects to be sized with total flexibility, including changing the shape. Simply click on the object to select and then click and drag one of the side or corner handles to size the bitmap as needed.

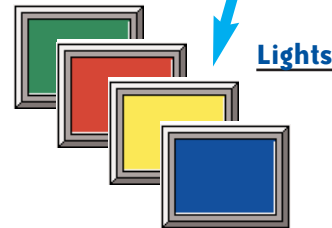
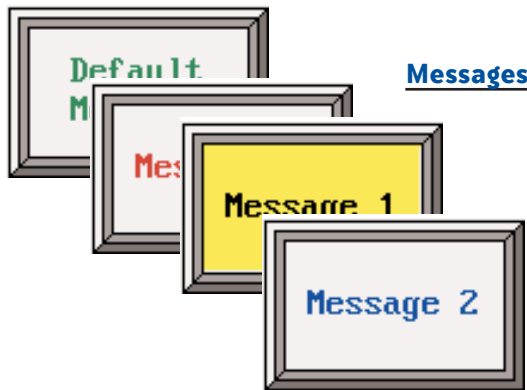
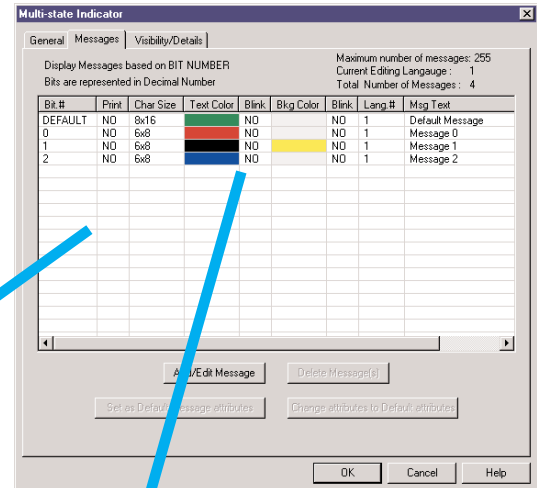


EZTouch CONFIGURATION SOFTWARE

NEW! Multi-state Indicator Object

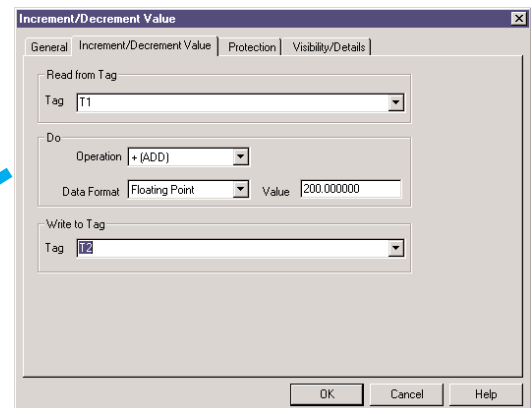
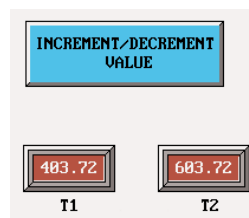
The new Multi-state Indicator Object is created to display preprogrammed messages within a frame on the EZTouch panel screen. Each object has preprogrammed messages that are stored in the object itself. In other words, messages are stored in the object, NOT the Message Database. (The Message Database is used by the Lookup Text Object only.) It displays one message at a time based on a bit (the one that is set), or a value in the tag. The maximum number of messages that can be programmed is 255. Click on the Messages tab to program messages in the database.

The Multi-state Indicator can also be used without messages as simply a Multi-state Indicator Light, such as the one shown here.









NEW! Increment/Decrement Value Object

The Increment/Decrement Value Object allows you to configure a button, that when pressed, will Add or Subtract from a value using two tags and a programmed value. You will be able to Read a value in the first tag and then Write to another using the value you have programmed to increment or decrement that register value. Of course, if both tags are the same, the tag itself is changed by that value.





EZTouch Selection Guide AND SPECIFICATIONS

EZTouch Panel Model Specifications						
Part Number	EZ-S6M-R	EZ-S6M-RS	EZ-S6M-F*	EZ-S6M-FS*	EZ-S6C-K	EZ-S6C-KS
						
Price	check	check	check	check	check	check
Specification	6" monochrome reduced feature	6" slim bezel monochrome reduced feature	6" monochrome full feature	6" slim bezel monochrome full feature	6" color Koyo only	6" slim bezel color Koyo only
Display Type	5.7" STN (16 shades of gray)				5.7" STN (128-color palette)	
Display Size (Viewing Area)	4.72"x3.5" (119.4x88.9 mm)				4.65"x3.5" (118.1x88.9 mm)	
Screen Pixels	320x240	320x240	320x240	320x240	320x240	320x240
Display Brightness	140 nits	140 nits	140 nits	140 nits	180 nits	180 nits
Touch Screen	48 resistive touch cells (8x6)	48 resistive touch cells (8x6)	48 resistive touch cells (8x6)	192 resistive touch cells (16x12)	48 resistive touch cells (8x6)	192 resistive touch cells (16x12)
CPU Type	Motorola Coldfire 32-bit CPU (40 MHz)					
Service Power	24VDC (20-30VDC operating range), 1.2A switching supply recommended					
Power Consumption	13 watts @ 24VDC	13 watts @ 24VDC	13 watts @ 24VDC	13 watts @ 24VDC	15 watts @ 24VDC	15 watts @ 24VDC
Enclosure	NEMA 4, 4X (indoor)					
Agency Approval	UL, cUL, CE					
Operating Temperature	0 to 45°C (32 to 113°F)	0 to 45°C (32 to 113°F)	0 to 45°C (32 to 113°F)	0 to 45°C (32 to 113°F)	0 to 45°C (32 to 113°F)	0 to 45°C (32 to 113°F)
Storage Temperature	-20 to 60°C (-4 to 140°F)	-20 to 60°C (-4 to 140°F)	-20 to 60°C (-4 to 140°F)	-20 to 60°C (-4 to 140°F)	-25 to 60°C (-13 to 140°F)	-25 to 60°C (-13 to 140°F)
Humidity	10-95% RH, noncondensing					
Electrical Noise	NEMA ICS 2-230 showering arc ANSI C37.90a-1974 SWC Level C Chattering Relay Test					
Withstand Voltage	1000VDC (1 minute), between power supply input terminal and protective ground (FG)					
Insulation Resistance	Over 20 MΩ, between power supply input and terminal and protective ground (FG)					
Vibration	5 to 55Hz 2G for 2 hours in the X, Y, and Z axes					
Shock	10G for under 12ms in the X, Y, and Z axes					
User Memory	256KB System RAM memory only		512KB system RAM	512KB system RAM	512KB system RAM	512KB system RAM
			512KB option RAM card for memory expansion to 1MB RAM			
			512KB option flash card for memory backup (EZ-FLASH-1)			
			1 MB option flash card for memory backup EZ-FLASH-2)			
Number of Screens	Up to 999 limited by memory					
Real Time Clock	Built into panel (PLC clock is still accessible if available)					
Screen Saver	Backlight off					
Serial Communications	PLC port: RS-232/RS-422/RS-485 15-pin D-sub (female)					
	Download/program port: RS-232/RS-422/RS-485 9-pin D-sub (female)					
Dimensions	7.30"x8.94"x2.29" (185.42x226.076x58.166mm)	6.145x8.048x2.433" (156.078x204.407x51.786mm)	7.30"x8.94"x2.29" (185.42x226.076x58.166mm)	6.145x8.048x2.433" (156.078x204.407x51.786mm)	7.30"x8.94"x2.29" (185.42x226.076x58.166mm)	6.145x8.048x2.433" (156.078x204.407x51.786mm)
Weight	1.4 lbs	1.7 lbs	1.4 lbs	1.7 lbs	1.4 lbs	1.7 lbs

Note: * denotes available with built-in Data Highway Plus interface card (add "H" to part number.).

EZTOUCH SELECTION GUIDE AND SPECIFICATIONS

EZTouch Panel Model Specifications				
Part Number	EZ-S6C-F*	EZ-S6C-FS*	EZ-S8C-F*	EZ-T10C-F*
				
Price	check	check	check	check
Specification	6" color full feature	6" color slim bezel full feature	8" color full feature	10" color full feature
Display Type	5.7" STN (128-color palette)	5.7" STN (128-color palette)	8.2" STN (128-color palette)	10.4" TFT (128-color palette)
Display Size (Viewing Area)	4.65"x3.5" (118.1x88.9mm)	4.65"x3.5" (118.1x88.9mm)	6.65"x5.024" (168.9x127.61mm)	8.31"x6.22" (211.07x158mm)
Screen Pixels	320x240	320x240	640x480	640x480
Display Brightness	180 nits	180 nits	90 nits	200 nits
Touch Screen	48 resistive touch cells (8x6)	192 resistive touch cells (16x12)	192 resistive touch cells (16x12)	192 resistive touch cells (16x12)
CPU Type	Motorola Coldfire 32-bit CPU (40 MHz)			
Service Power	24VDC (20-30VDC operating range), 1.2A switching supply recommended			
Power Consumption	15 watts @ 24VDC	15 watts @ 24VDC	16 watts @ 24VDC	18 watts @ 24VDC
Enclosure	NEMA 4, 4X (indoor)			
Agency Approval	UL, cUL, CE			
Operating Temperature	0 to 45°C (32 to 113°F)	0 to 45°C (32 to 113°F)	0 to 40°C (32 to 104°F)	0 to 50°C (32 to 122°F)
Storage Temperature	-25 to 60°C (-13 to 140°F)	-25 to 60°C (-13 to 140°F)	-20 to 60°C (-4 to 140°F)	-25 to 60°C (-13 to 140°F)
Humidity	10-95% RH, noncondensing			
Electrical Noise	NEMA ICS 2-230 showering arc ANSI C37.90a-1974 SWC Level C Chattering Relay Test			
Withstand Voltage	1000VDC (1 minute), between power supply input terminal and protective ground (FG)			
Insulation Resistance	Over 20 MΩ, between power supply input and terminal and protective ground (FG)			
Vibration	5 to 55Hz 2G for 2 hours in the X, Y, and Z axes			
Shock	10G for under 12ms in the X, Y, and Z axes			
User Memory	512KB System RAM memory			
	512KB option RAM card (for a total of 1MB RAM)			
	512KB option flash card (EZ-FLASH-1)			
	1MB option flash card (EZ-FLASH-2)			
Number of Screens	Up to 999 limited by memory			
Real Time Clock	Built into panel (PLC clock is still accessible if available)			
Screen Saver	Backlight off			
Serial Communications	PLC port: RS-232/RS-422/RS-485 15 pin D-sub (female)			
	Download/program port: RS-232/RS-422/RS-485 9 pin D-sub (female)			
Dimensions	7.30"x8.94"x2.29" (185.42x226.07x58.166mm)	6.145"x8.048"x2.433" (156.078x204.407x51.786mm)	8.50"x10.55"x2.44" (215.9x267.97x61.976mm)	10.60"x13.59"x2.60" (269.22x345.186x66.04mm)
Weight	1.4 lbs	1.7 lbs	1.6 lbs	3.8 lbs


Note: * denotes available with built-in Data Highway Plus interface card (add "H" to part number.).



EZTOUCH CABLES AND WIRING

Power connector

A block style connector is used to connect an external 24VDC power supply. You can use our own FA-24PS 24VDC power supply as your source.

Power Connector		
Pin #	Connection	
+	+V	24VDC (20-30VDC)
-	-V	
	Chassis Ground	

PLC port

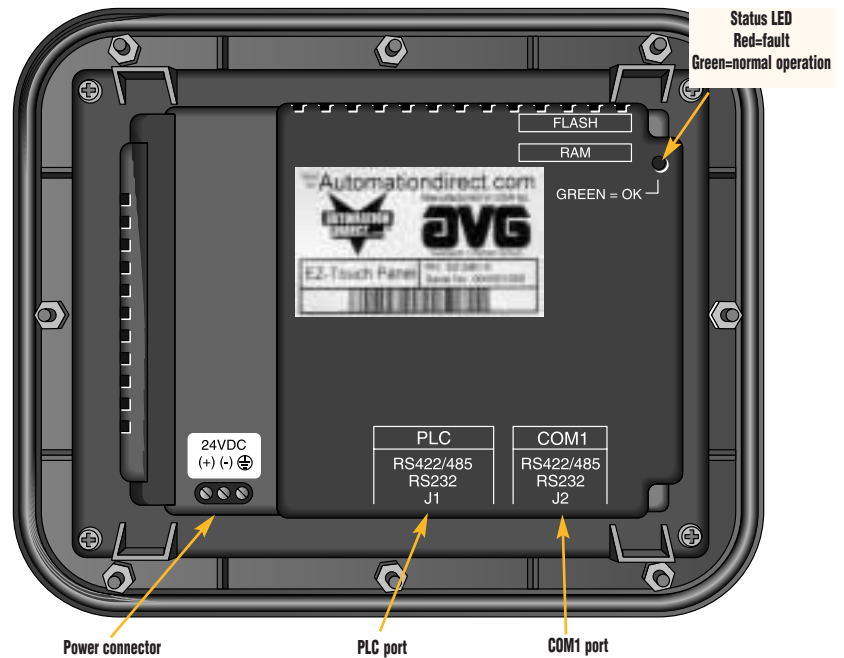
The PLC port is a RS-232C, RS-422A or RS-485A female 15-pin D-sub connector. See the table below for the appropriate cable for your application.

COM 1 port

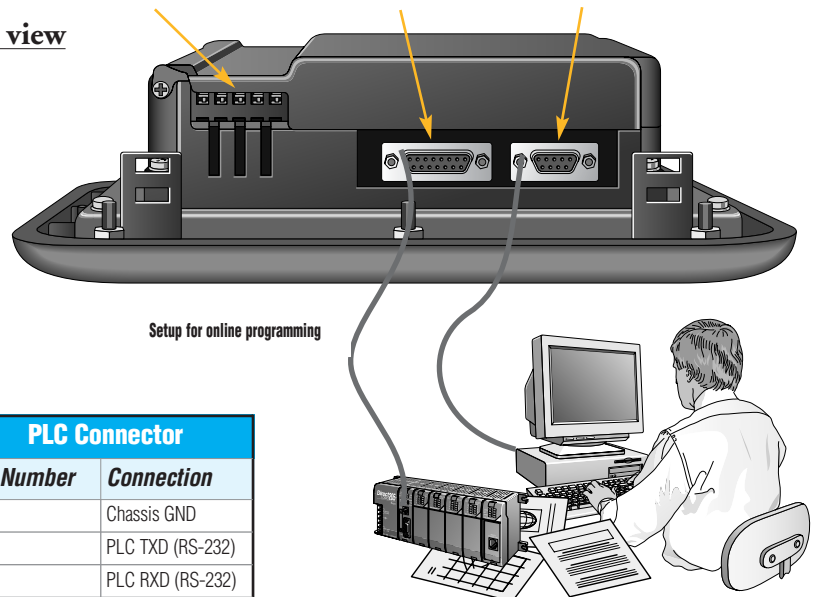
RS-232C, RS-422A, or RS-485A female 9-pin D-sub connector is used to connect to the programming computer or PLC.

Cable Part Number	Cable Description	Price
EZ-2CBL	DirectLOGIC PLC RJ-12	check
EZ-2CBL-1	DirectLOGIC VGA 15-pin (D2-250)	check
EZ-3CBL	DirectLOGIC PLC RJ-11	check
EZ-4CBL-1	DirectLOGIC DL405 PLC 15-pin D-sub port	check
EZ-4CBL-2	DirectLOGIC PLC 25-pin D-sub port	check
EZ-MLOGIX-CBL	Allen-Bradley MicroLogix	check
EZ-SLC-232-CBL	Allen-Bradley SLC 5-03/04/05DF1 port	check
EZPLC5-232-CBL	Allen-Bradley PLC-5 DF1 port	check
EZ-DH485-CBL	Allen-Bradley SLC 500 DH485	check
EZ-90-30-CBL	GE 90/30 and 90/70 15 pin D-sub	check
EZ-MITSU-CBL	MITSUBISHI FX24 25-pin	check
EZ-MITSU-CBL-1	MITSUBISHI FX24 8-pin mini-DIN	check
EZ-S7MPI-CBL	Siemens S7 MPI adapter 9-pin D-sub	check
EZTOUCH-PGMCBL	Programming cable	check

Back view



Side view



PLC Connector	
Pin Number	Connection
1	Chassis GND
2	PLC TXD (RS-232)
3	PLC RXD (RS-232)
4	+5V
5	Logic GND
6	LE
7	PLC CTS (RS-232)
8	PLC RTS (RS-232)
9	RXD+ (RS-422)
10	RXD- (RS-422)
11	TXD+ (RS-422)
12	TXD- (RS-422)
13	Terminating resistor
14	NC
15	NC

COM 1 Connector	
Pin Number	Connection
1	TXD- (RS-422)
2	TXD (RS-232)
3	RXD (RS-232)
4	RXD- (RS-422)
5	Logic GND
6	TXD+ (RS-422)
7	CTS (RS-232)
8	RTS (RS-232)
9	RXD+ (RS-422)

EZTouch ACCESSORIES

Part Number	Description	Price
EZ-TOUCHEDIT	EZTouch Panel Programming Software	check
EZ-TOUCH-M	Hardware User Manual	check
EZ-RAM-1	1MB RAM upgrade (512K RAM card)	check
EZ-FLASH-1	512K Flash option upgrade	check
EZ-FLASH-2	1MB Flash option upgrade	check
EZ-ETHERNET	Ethernet Option Interface Card	check
EZ-BAT	EZTouch replacement battery	check
EZ-BRK-1	EZTouch optional DIN mounting clips (pk. of 6)	check
EZ-TOUCH6-GSK	(6") Standard replacement gasket for all 6" panels except slimlines	check
EZ-TOUCH8-GSK	(8") Standard replacement gasket	check
EZ-TOUCH10-GSK	(10") Standard replacement gasket	check
EZTOUCH-PGMCBL	Programming cable	check
EZ-TOUCH-STUDS	EZTouch replacement studs (pk. of 8)	check
EZ-6SLIMF-GSK	(6") Slim bezel FDA replacement gasket, white.	check

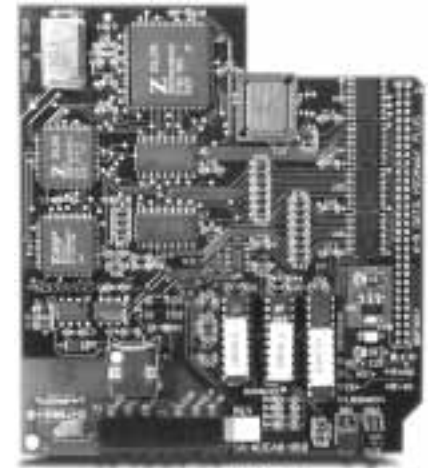
Memory cards



Battery



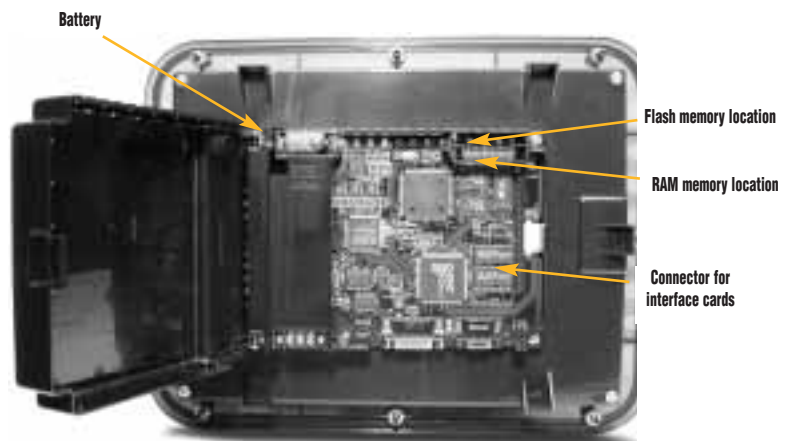
Ethernet option interface card



Replacement gaskets



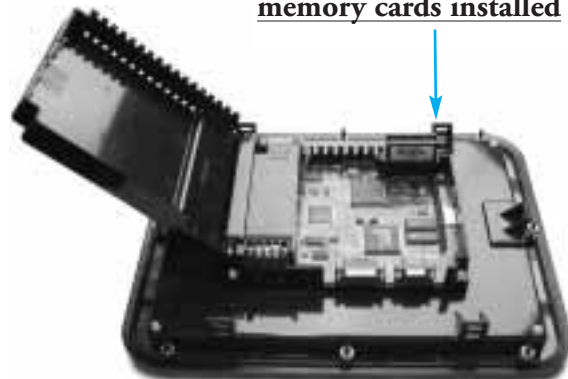
Device locations



Memory cards being installed



Both Flash and RAM memory cards installed





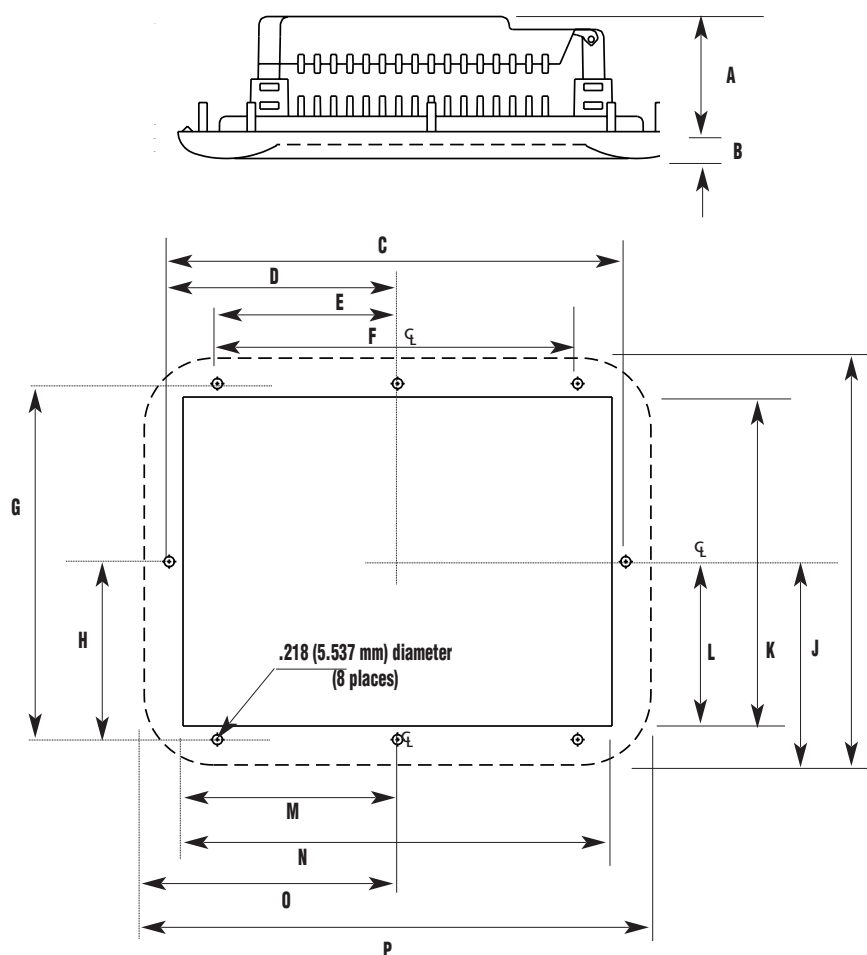
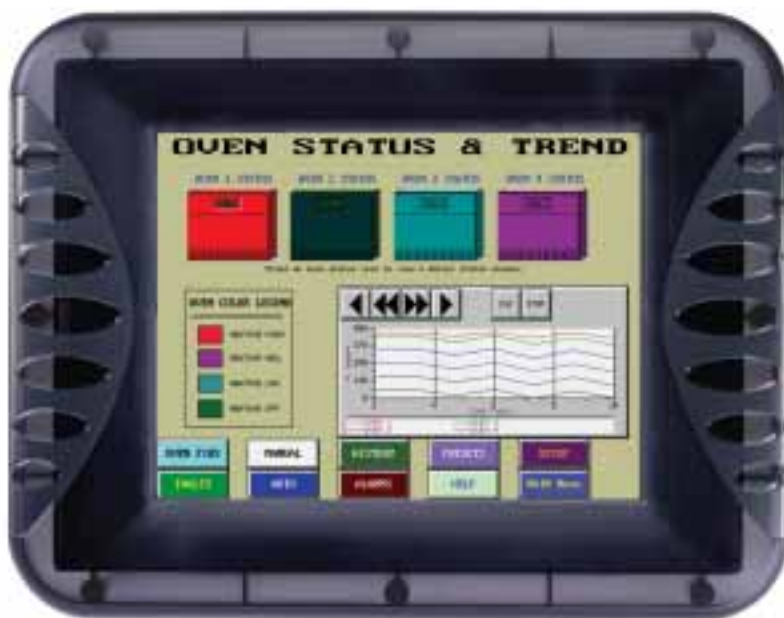
EZTouch 10" TFT Color Panel

10" panel (10.4" TFT)

The 10.4" panel is the top of the line in our EZTouch family. The panel has a full VGA 640x480 pixel resolution, and the crisp clear TFT LCD (liquid crystal display) is the perfect choice for applications requiring a larger display.

EZ-T10C-F features

- 10.4" diagonal Color TFT LCD (active matrix)
- 128 colors
- 640x480 pixel resolution (full VGA)
- 512K RAM, expandable to 1MB
- Ethernet card optional
- 50,000 hour expected bulb half-life
- 192 touch cells (16 x 12)
- 1/4" O-ring gasket and eight mounting studs for NEMA 4/4x (indoor)
- 2.6" (65.4mm) installed depth
- Available with built-in Data Highway Plus interface card (EZ-T10C-FH).
- **Part No.: EZ-T10C-F**



Dimensions (inch,mm)		
Legend	EZ-S8C-F	EZ-T10C-F
A	2.475 (62.865)	2.575 (65.405)
B	.618 (15.697)	.618 (15.697)
C	9.843 (250.012)	12.508 (317.708)
D	4.921 (124.993)	6.254 (158.854)
E	3.882 (98.603)	5.219 (132.565)
F	7.765 (197.231)	10.438 (265.128)
G	7.672 (194.869)	9.500 (241.298)
H	3.836 (97.434)	4.750 (120.649)
I	8.755 (222.377)	10.600 (269.240)
J	4.377 (111.176)	5.300 (134.620)
K	7.076 (179.726)	8.916 (226.478)
L	3.538 (89.865)	4.458 (113.233)
M	4.625 (117.475)	5.953 (151.206)
N	9.250 (234.950)	11.906 (302.412)
O	5.457 (138.608)	6.792 (172.517)
P	10.915 (277.241)	13.584 (345.034)

EZTouch 8" STN Color Panel

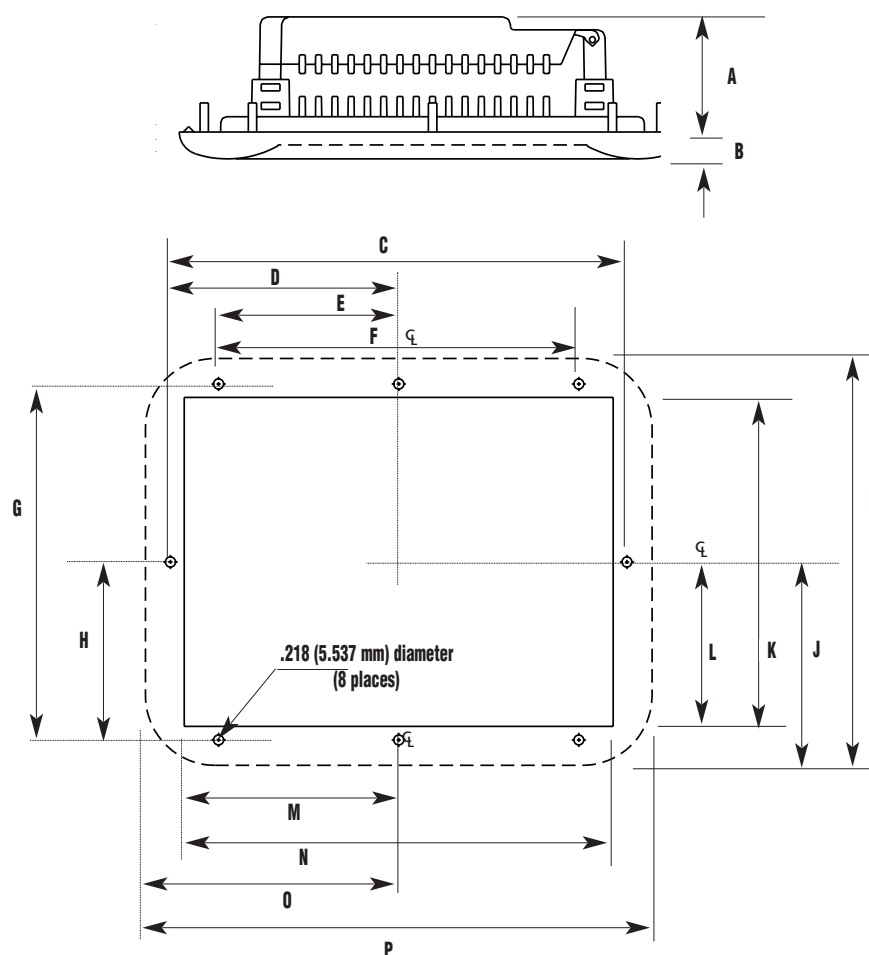
8" panel (8.2" STN)

The 8" EZTouch panel has an 8.2" diagonal touch screen, with a full VGA 640x480 pixel resolution. The STN color LCD (liquid crystal display) has a much lower brightness than the 10" panel and is recommended for use where a standard laptop PC brightness is sufficient.

EZ-S8C-F features

- 8.2" diagonal Color STN LCD
- 128 colors
- 640x480 pixel resolution (full VGA)
- 512K RAM, expandable to 1MB
- Ethernet card optional
- 10,000 hour expected bulb half-life (screen saver protects bulb)
- 192 touch cells (16 x 12)
- 1/4" O-ring gasket and eight mounting studs for NEMA 4/4x (indoor)
- 2.5" (62.8mm) installed depth
- Available with built-in Data Highway Plus interface card (EZ-S8C-F)

• **Part No. EZ-S8C-F**



Dimensions (inch, mm)		
Legend	EZ-S8C-F	EZ-T10C-F
A	2.475 (62.865)	2.575 (66.405)
B	.618 (15.697)	.618 (15.697)
C	9.843 (250.012)	12.508 (317.708)
D	4.921 (124.993)	6.254 (158.854)
E	3.882 (98.603)	5.219 (132.565)
F	7.765 (197.231)	10.438 (265.128)
G	7.672 (194.869)	9.500 (241.298)
H	3.836 (97.434)	4.750 (120.649)
I	8.755 (222.377)	10.600 (269.240)
J	4.377 (111.176)	5.300 (134.620)
K	7.076 (179.726)	8.916 (226.478)
L	3.538 (89.865)	4.458 (113.233)
M	4.625 (117.475)	5.953 (151.206)
N	9.250 (234.950)	11.906 (302.412)
O	5.457 (138.608)	6.792 (172.517)
P	10.915 (277.241)	13.584 (345.034)



EZTouch 6" STN Color Panels

6" color panels (5.7" STN)

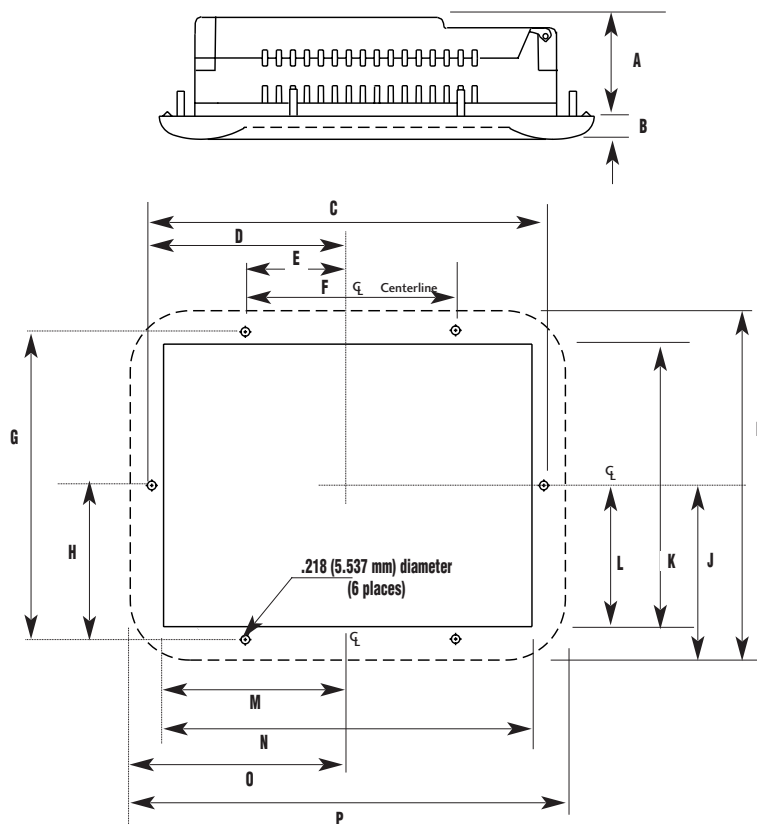
The 6" color EZTouch panels have a 5.7" diagonal touch screen, with a 320x240 pixel resolution. They also feature an STN LCD (liquid crystal display). There are two standard color models of 6" panels to choose from: one for Koyo PLCs/Think & Do only, and one for all other PLCs.

6" color panel for Koyo PLCs/Think & Do only

- 5.7" diagonal color STN LCD
- 128 colors
- 320x240 pixel resolution
- 512K RAM, expandable to 1MB
- Ethernet card optional
- 25,000 hour expected bulb half-life
- 48 touch cells (8x6)
- 1/4" O-ring gasket and eight mounting studs for NEMA 4/4x (indoor)
- 2.3" (59.0mm) installed depth
- **Part No. EZ-S6C-K**

6" color panel for other PLCs

- 5.7" diagonal color STN LCD
- 128 colors
- 320x240 pixel resolution
- 512K RAM, expandable to 1MB
- Ethernet card optional
- 25,000 hour expected bulb half-life
- 48 touch cells (8x6)
- 1/4" O-ring gasket and eight mounting studs for NEMA 4/4x (indoor)
- 2.3" (59.0mm) installed depth
- Available with built-in Data Highway Plus interface card (EZ-S6C-FH)
- **Part No. EZ-S6C-F**



Dimensions (inch, mm)

Legend	EZ-S6M-R/F EZ-S6C-K/F
A	2.325 (59.055)
B	.618 (15.697)
C	8.076 (205.135)
D	4.038 (102.565)
E	2.125 (53.978)
F	4.250 (107.950)
G	6.223 (158.057)
H	3.111 (79.029)
I	7.297 (185.343)
J	3.649 (92.672)
K	5.625 (142.878)
L	2.812 (71.427)
M	3.761 (95.532)
N	7.522 (191.064)
O	4.466 (113.436)
P	8.932 (226.873)

EZTouch 6" STN Color Slim Bezel Panels

6" slim bezel color panel (5.7" STN)

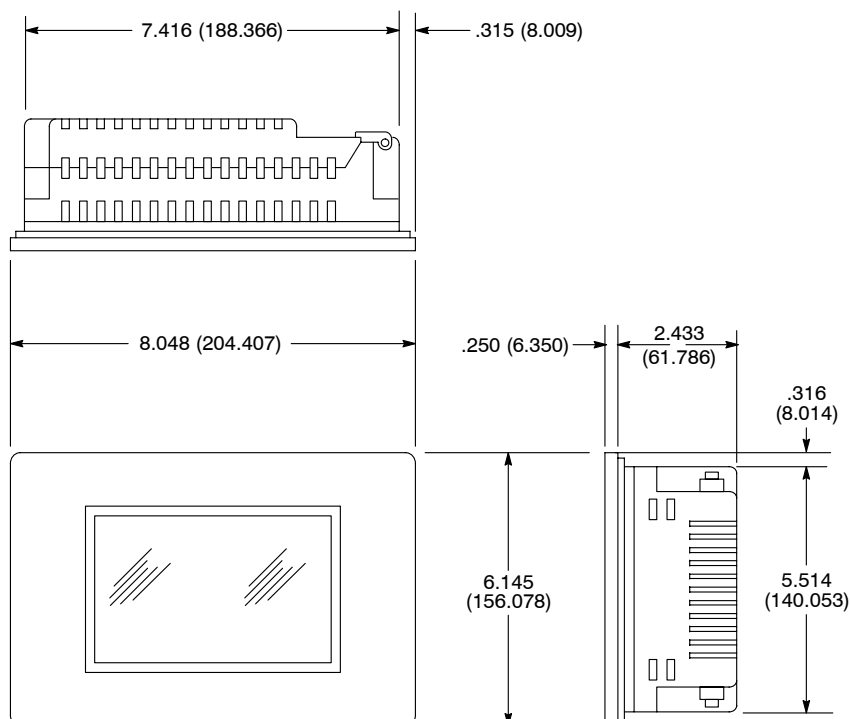
The 6" color EZTouch slim bezel panels have a 5.7" diagonal touch screen, with a 320x240 pixel resolution and feature an STN LCD (liquid crystal display). There are two 6" color panels to choose from: one for Koyo PLCs/Think & Do only and one for all other PLCs. Both feature a low-profile slim bezel design that provide a small footprint on your enclosure.

6" color slim panel for Koyo PLCs/Think & Do only

- 5.7" diagonal color STN LCD
- Low-profile slim bezel design
- 128 colors
- FDA-compliant material (with original white gasket)
- 320x240 pixel resolution
- 512K RAM, expandable to 1MB
- No Ethernet card support
- 25,000 hour expected bulb half-life
- 192 touch cells (16x12)
- 1/4" gasket and four DIN mounting clips for NEMA 4/4x (indoor)
- 2.3" (59.0mm) installed depth
- **Part No. EZ-S6C-KS**

6" color slim panel for other PLCs

- 5.7" diagonal color STN LCD
- Low-profile slim bezel design
- 128 colors
- FDA-compliant material (with original white gasket)
- 320x240 pixel resolution
- 512K RAM, expandable to 1MB
- Ethernet card optional
- 25,000 hour expected bulb half-life
- 192 touch cells (16x12)
- 1/4" gasket and four DIN mounting clips for NEMA 4/4x (indoor)
- 2.3" (59.0mm) installed depth
- Available with built-in Data Highway Plus interface card (EZ-S6C-FSH)
- **Part No. EZ-S6C-FS**





EZTouch 6" Mono Panels

6" mono panels (5.7" STN)

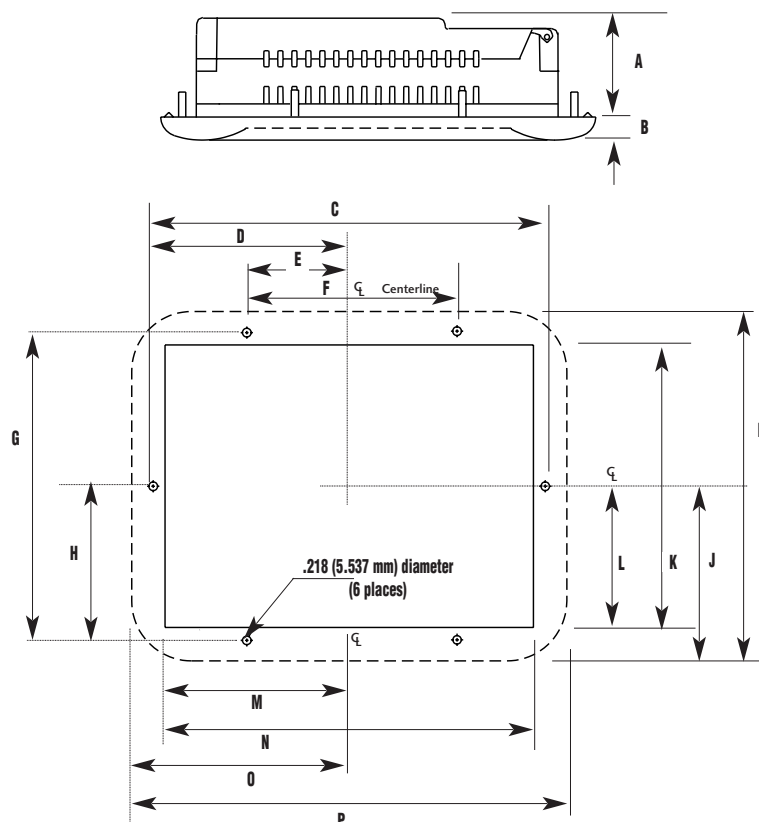
The 6" mono EZTouch panels have a 5.7" diagonal touch screen, with a 320x240 pixel resolution and feature an STN LCD (liquid crystal display) with 16 shades of gray. There are two 6" mono panels to choose from: one with reduced memory/no Ethernet option and one with full 512K memory and an Ethernet option.

6" mono panel with reduced memory

- 5.7" diagonal mono STN LCD
- 16 shades of gray
- 320x240 pixel resolution
- 256K RAM, not expandable
- No Ethernet card support
- 25,000 hour expected bulb half-life
- 48 touch cells (8x6)
- 1/4" O-ring gasket and eight mounting studs for NEMA 4/4x (indoor)
- 2.3" (59.0mm) installed depth
- **Part No. EZ-S6M-R**

6" mono panel with full memory

- 5.7" diagonal color STN LCD
- 16 shades of gray
- 320x240 pixel resolution
- 512K RAM, expandable to 1MB
- Ethernet card optional
- 25,000 hour expected bulb half-life
- 48 touch cells (8x6)
- 1/4" O-ring gasket and 8 mounting studs for NEMA 4/4x (indoor)
- 2.3" (59.0mm) installed depth
- Available with built-in Data Highway Plus interface card (EZ-S6M-FH)
- **Part No. EZ-S6M-F**



Dimensions (inch, mm)

Legend	EZ-S6M-R/F EZ-S6C-K/F
A	2.325 (59.055)
B	.618 (15.697)
C	8.076 (205.135)
D	4.038 (102.565)
E	2.125 (53.978)
F	4.250 (107.950)
G	6.223 (158.057)
H	3.111 (79.029)
I	7.297 (185.343)
J	3.649 (92.672)
K	5.625 (142.878)
L	2.812 (71.427)
M	3.761 (95.532)
N	7.522 (191.064)
O	4.466 (113.436)
P	8.932 (226.873)

EZTouch 6" Mono Slim Bezel Panels

6" mono slim bezel EZTouch panels (5.7" STN)

The 6" mono EZTouch panels have a 5.7" diagonal touch screen, with a 320x240 pixel resolution and feature an STN LCD (liquid crystal display) with 16 shades of gray. There are two mono 6" panels to choose from: one with reduced memory/no Ethernet option (with 48 touch cells) and one with full 512K memory and an Ethernet option (with 192 touch cells). Both feature a low-profile slim bezel design for a small footprint on your enclosure.

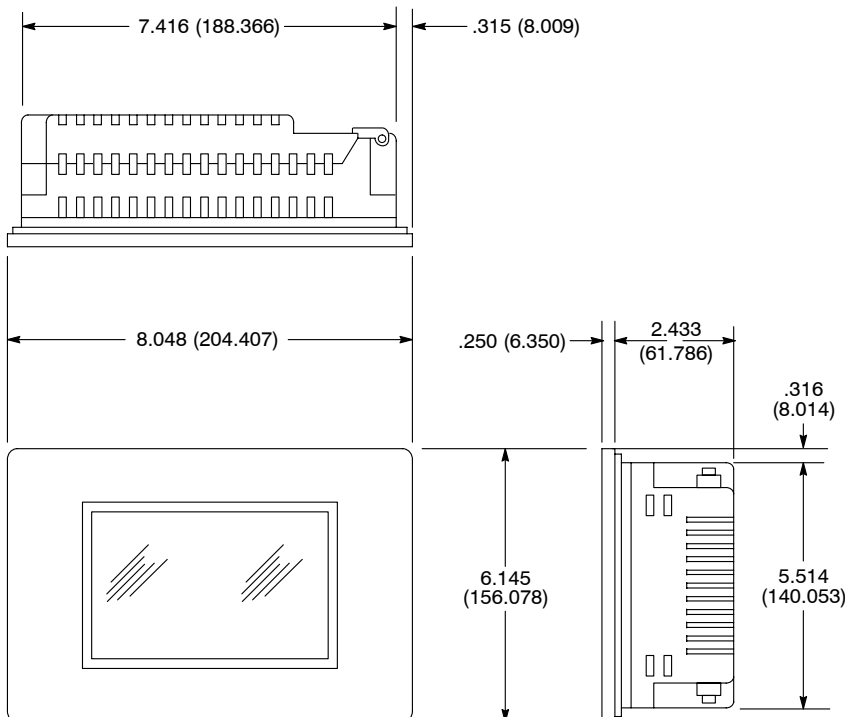


6" mono slim bezel panel with reduced memory

- 5.7" diagonal mono STN LCD
- 16 shades of gray
- FDA-compliant material (with original white gasket)
- 320x240 pixel resolution
- 256K RAM, not expandable
- No Ethernet card support
- 25,000 hour expected bulb half-life
- 48 touch cells (8x6)
- 1/4" gasket and four DIN mounting clips for NEMA 4/4x (indoor)
- 2.3" (59.0mm) installed depth
- **Part No. EZ-S6M-RS**

6" mono slim bezel panel with full memory

- 5.7" diagonal Color STN LCD
- 16 shades of gray
- FDA-compliant material (with original white gasket)
- 320x240 pixel resolution
- 512K RAM, expandable to 1MB
- Ethernet card optional
- 25,000 hour expected bulb half-life
- 192 touch cells (16x12)
- 1/4" gasket and four DIN mounting clips for NEMA 4/4x (indoor)
- 2.3" (59.0mm) installed depth
- Available with built-in Data Highway Plus interface card (EZ-S6M-FSH)
- **Part No. EZ-S6M-FS**





EZ Operator Interfaces

Part Number

Page

EZTouch Panels	
EZ-S6M-R	746
EZTouch Operator Panel, offers 5.7 inch STN monochrome display and 48-cell resistive touch screen, 256K RAM (fixed, not expandable). 20-30VDC operating range. Works with serial drivers listed below. Does not support Ethernet option module.	
EZ-S6M-RS	747
NEW! EZTouch Operator Panel, offers 5.7 inch STN monochrome display, slim bezel and 48-cell resistive touch screen, 256K RAM (fixed, not expandable). 20-30VDC operating range. Works with serial drivers listed below. All exposed materials are FDA approved when panel-mounted. Does not support Ethernet module.	
EZ-S6M-F	746
EZTouch Operator Panel, offers 5.7 inch STN monochrome display and 48-cell resistive touch screen, 512K RAM, expandable to 1Mbyte. 20-30VDC operating range. Works with serial drivers listed below.	
EZ-S6M-FH	746
NEW! EZTouch Operator Panel, offers 5.7 inch STN monochrome display and 48-cell resistive touch screen, 512K RAM, expandable to 1Mbyte. 20-30VDC operating range. Interface module installed which allows operation on a Data Highway Plus network; also works with serial drivers listed below. Note: Approximate 2 week lead time.	
EZ-S6M-FS	747
NEW! EZTouch Operator Panel, offers 5.7 inch STN monochrome display, slim bezel, and 192-cell resistive touch screen, 512K RAM, expandable to 1Mbyte. Both 512K & 1 Mbyte compact flash options available. 20-30VDC operating range. Works with serial drivers listed below. All exposed materials are FDA approved when panel-mounted.	
EZ-S6M-FSH	747
NEW! EZTouch Operator Panel, offers 5.7 inch STN monochrome display, slim bezel, and 192-cell resistive touch screen, 512K RAM, expandable to 1Mbyte. Both 512K & 1 Mbyte compact flash options available. 20-30VDC operating range. Interface module installed which allows operation on a Data Highway Plus network; also works with serial drivers listed below. All exposed materials are FDA approved when panel-mounted. Note: Approximate 2 week lead time.	
EZ-S6C-K	744
EZTouch Operator Panel, offers 5.7 inch STN color display and 48-cell resistive touch screen, 512K RAM, expandable to 1Mbyte. 20-30VDC operating range. Works with DirectLOGIC PLC protocols only.	
EZ-S6C-KS	745
NEW! EZTouch Operator Panel, offers 5.7 inch STN color display, slim bezel, and 192-cell resistive touch screen, 512K RAM, expandable to 1Mbyte. 20-30VDC operating range. Works with DirectLOGIC PLC protocols only. All exposed materials are FDA approved when panel-mounted.	
EZ-S6C-F	744
EZTouch Operator Panel, offers 5.7 inch STN color display and 48-cell resistive touch screen, 512K RAM, expandable to 1Mbyte. 20-30VDC operating range. Works with serial drivers listed below.	
EZ-S6C-FH	744
NEW! EZTouch Operator Panel, offers 5.7 inch STN color display and 48-cell resistive touch screen, 512K RAM, expandable to 1Mbyte. 20-30VDC operating range. Interface module installed which allows operation on a Data Highway Plus network; also works with serial drivers listed below. Note: Approximate 2 week lead time.	
EZ-S6C-FS	745
NEW! EZTouch Operator Panel, offers 5.7 inch STN color display and 192-cell resistive touch screen, slim bezel, 512K RAM, expandable to 1Mbyte. 20-30VDC operating range. Both 512K & 1 Mbyte compact flash options available. All exposed materials are FDA approved when panel-mounted.	
EZ-S6C-FSH	745
NEW! EZTouch Operator Panel, offers 5.7 inch STN color display and 192-cell resistive touch screen, slim bezel, 512K RAM, expandable to 1Mbyte. 20-30VDC operating range. Both 512K & 1 Mbyte compact flash options available. Interface module installed which allows operation on a Data Highway Plus network; also works with serial drivers listed below. All exposed materials are FDA approved when panel-mounted. Note: Approximate 2 week lead time.	
EZ-S8C-F	743
EZTouch Operator Panel, offers 8.2 inch STN color display and 192-cell resistive touch screen, 512K RAM, expandable to 1Mbyte. 20-30VDC operating range. Works with serial drivers listed below.	
EZ-S8C-FH	743
NEW! EZTouch Operator Panel, offers 8.2 inch STN color display and 192-cell resistive touch screen, 512K RAM, expandable to 1Mbyte. 20-30VDC operating range. Interface module installed which allows operation on a Data Highway Plus network; also works with serial drivers listed below. Note: Approximate 2 week lead time.	
EZ-T10C-F	742
EZTouch Operator Panel, offers 10.4 inch TFT color display and 192-cell resistive touch screen, 512K RAM, expandable to 1Mbyte. 20-30VDC operating range. Works with serial drivers listed below.	
EZ-T10C-FH	742
NEW! EZTouch Operator Panel, offers 10.4 inch TFT color display and 192-cell resistive touch screen, 512K RAM, expandable to 1Mbyte. 20-30VDC operating range. Interface module installed which allows operation on a Data Highway Plus network; also works with serial drivers listed below. Note: Approximate 2 week lead time.	
EZ-TOUCH-M	
All EZTouch panels are covered in the EZTouch Operator Panels Hardware and Installation manual. A manual is included with each product, but it can also be purchased separately if additional copies are required..	
Notes: All EZTouch panels (except EZ-S6C-K) support DL05/06, DL105, DL205, DL305, DL405 serial protocols, including K-sequence, DirectNet and Koyo Modbus; Allen-Bradley SLC 5/03, SLC 5/04, SLC 5/05 and PLC5 and Micrologix 1000,1200 and 1500 CPUs with DF1 or DH485 protocols; Siemens S7 300/400 PLCs (MPI Adapter, 3964R protocol);GE Fanuc 90/30 and 90/70 series with SNPX and any Series Six PLC with CCM2 protocol; standard Modbus; Omron's C200 and C500 with HostLink protocol; Mitsubishi FX Series. Ethernet requires an optional interface module.	
All panels come with EZ-TOUCH-M User Manual. Configuration software, cables, and connectors sold separately.	

EZ Operator Interfaces

Part Number

Page

EZTouch Panel Programming Software and Cables	
EZ-TOUCHEDIT	741
<i>EZTouch Operator Panels Windows-based configuration software. Requires Windows 95/98/NT or 2000. Includes manual and CD-ROM. Cables sold separately.</i>	
EZTOUCH-PGMCBL	741
<i>Configuration cable to connect your personal computer to any EZTouch panel for setup and programming. 3m (9.8ft) RS232C cable, 9-pin D-shell male connector to 9-pin D-shell female connector. External 24VDC power supply also required to configure EZTouch panels.</i>	
EZTouch Panel Options and Accessories	
EZ-RAM-1	741
<i>512K RAM expansion card, for units with expandable memory. Expands EZTouch to 1Mbyte battery-backed RAM.</i>	
EZ-FLASH-1	741
<i>512K flash memory card, for removable non-volatile program retention.</i>	
EZ-FLASH-2	741
<i>1Mbyte flash memory card, for removable non-volatile program retention.</i>	
EZ-ETHERNET	741
<i>Ethernet communications option card, for Ethernet LAN 10BaseT network connection. Works with H2- and H4-ECOM Ethernet modules located in DL205 and DL405 PLC systems. Manual included.</i>	
EZ-BAT	741
<i>EZTouch replacement 1/2 AA, 3.6 volt lithium battery</i>	
EZ-BRK-1	741
<i>EZTouch Panel optional DIN rail clips, for use with 6 inch panels only. Package of two.</i>	
EZ-TOUCH6-GSK	741
<i>EZTouch standard replacement gasket for all 6 inch standard bezel panels (does not work with slim bezel units)</i>	
EZ-TOUCH8-GSK	741
<i>EZTouch standard replacement gasket for all 8 inch panels.</i>	
EZ-TOUCH10-GSK	741
<i>EZTouch standard replacement gasket for all 10 inch panels.</i>	
EZ-6SLIMF-GSK	741
<i>NEW! EZTouch slim replacement gasket for 6 inch slim panels, FDA approved material, charcoal gray</i>	
EZ-TOUCH-STUDS	741
<i>EZTouch/Text Panel spare mounting studs. Package of eight, with nuts.</i>	
EZText Panels	
EZ-220	755
<i>EZText Operator Panel, offers 2 line x 20 character LCD display, 5 user defined pushbuttons with LED indicators, arrow adjust, menu and data setpoint and display. 2 embedded read only data points and 1 read/write data point per message. Dynamic decimal point option with the read/write message. Works with serial drivers listed below. 20-30VDC operating range. Configuration software, cables, and connectors sold separately.</i>	
EZ-420	755
<i>EZText Operator Panel, offers 4 line x 20 character LCD display, 5 user defined pushbuttons with LED indicators, arrow adjust, menu and data setpoint and display. 2 embedded read only data points and 1 read/write data point per message. Dynamic decimal point option with the read/write message. Works with serial drivers listed below. 20-30VDC operating range. Configuration software, cables, and connectors sold separately.</i>	
EZ-220L	755
<i>EZText Operator Panel, offers 2 line x 20 large character LCD display, 5 user defined pushbuttons with LED indicators, arrow adjust, menu and data setpoint and display. 2 embedded read only data points and 1 read/write data point per message. Dynamic decimal point option with the read/write message. Works with serial drivers listed below. 20-30VDC operating range. Configuration software, cables, and connectors sold separately.</i>	
EZ-TEXT-M	
<i>Hardware/configuration manual for EZ-220, EZ-420, EZ-220L</i>	
EZ-220P	756
<i>EZText Operator Panel, offers 2 line x 20 character LCD display, numeric keypad, 5 user defined pushbuttons with LED indicators, arrow adjust, menu and data setpoint and display. 2 embedded read only data points and 1 read/write data point per message. Dynamic decimal point option with the read/write message. Works with serial drivers listed below. 20-30VDC operating range. Configuration software, cables, and connectors sold separately.</i>	
EZ-TEXT-P-M	
<i>Hardware/configuration manual for EZ-220P</i>	
EZ-SP	757
<i>EZText Setpoint Panel, offers 8-digit LED display, 5 user defined pushbuttons with LED indicators, arrow data adjust and display. 256 points available with a programmable 16-character description per data point. Works with serial drivers listed below. 20-30VDC operating range. Configuration software, cables, and connectors sold separately.</i>	
EZ-TEXT-SP-M	
<i>Hardware/configuration manual for EZ-SP</i>	
Notes: All EZText panels support DL05/06, DL105, DL205, DL305, DL405 serial protocols, including K-sequence, DirectNet and Koyo Modbus; Allen-Bradley SLC 5/03, SLC 5/04, SLC 5/05 and PLC5 and Micrologix 1000, 1200 and 1500 CPUs with DF1 protocols; Siemens S7 300/400 PLCs (MPI Adapter, 3964R protocol); GE Fanuc 90/30 and 90/70 series with SNPX and any Series Six PLC with CCM2 protocol; standard Modbus; Omron's C200 and C500 with HostLink protocol; Mitsubishi FX Series. Configuration software and cables sold separately.	



EZ Operator Interfaces

Part Number

Page

EZText Panel Programming Software and Cables	
EZ-TEXTEDIT	758
<i>EZText Operator Panels Windows-based configuration software. Requires Windows 95/98/NT or 2000. Includes manual and CD-ROM. Cables sold separately.</i>	
EZTEXT-PGMCBL	758
<i>Configuration cable to connect your personal computer to any EZText panel for setup and programming. 2m (6.56ft) RS232C cable, 15-pin D-shell male connector to 9-pin D-shell female connector. External 24VDC power supply also required to configure EZText panels.</i>	
EZTouch and EZText Communication Cables	
EZ-2CBL	740
<i>Shielded cable to connect any EZText or EZTouch panel to a DL05, DL06, DL105, DL205, D3-350 or D4-450 CPU. 3m (9.8ft) RS232C cable, 15-pin D-shell male connector to RJ12 modular connector.</i>	
EZ-2CBL-1	740
<i>Shielded cable to connect any EZText or EZTouch panel to a D2-250 (bottom port) CPU. 3m (9.8ft) RS232C cable, 15-pin D-shell male connector to 15-pin male HD.</i>	
EZ-3CBL	740
<i>Shielded cable to connect any EZText or EZTouch panel to a D3-340 CPU top or bottom port. 3m (9.8ft) RS232C cable, 15-pin D-shell male connector to RJ11 modular connector.</i>	
EZ-4CBL-1	740
<i>Shielded cable to connect any EZText or EZTouch panel to a DL405 (top port) CPU. 3m (9.8ft) RS232C cable, 15-pin D-shell male connector to 15-pin D-shell male connector.</i>	
EZ-4CBL-2	740
<i>Shielded cable to connect any EZText or EZTouch panel to a D3-350 (bottom port), a D3-232-DCU installed on a D3-330 or D3-340, or DL-405 (bottom port) CPU. 3m (9.8ft) RS232C cable, 15-pin D-shell male connector to 25-pin D-shell male connector.</i>	
EZ-MLOGIX-CBL	740
<i>Shielded cable to connect any EZText or EZTouch panel to an A-B Micrologix 1000, 1200 or 1500 CPU. 1.83m (6ft) RS232C cable, 15-pin D-shell male connector to 8-pin DIN connector.</i>	
EZ-SLC-232-CBL	740
<i>Shielded cable to connect any EZText or EZTouch panel to an A-B SLC 5/03, 5/04 or 5/05 CPU with DF-1 port. 3m (9.8ft) RS232C cable, 15-pin D-shell male connector to 9-pin D-shell female connector.</i>	
EZPLC5-232-CBL	740
<i>Shielded cable to connect any EZText or EZTouch panel to an A-B PLC5 CPU with a DF1 port. 3m (9.8ft) RS232C cable, 15-pin D-shell male connector to 25-pin D-shell male connector.</i>	
EZ-DH485-CBL	740
<i>Shielded cable to connect any EZText or EZTouch panel to an A-B SLC500 CPU with a DH485 port. 3m (9.8ft) RS232C cable.</i>	
EZ-90-30-CBL	740
<i>Shielded cable to connect any EZText or EZTouch panel to a GE Fanuc Series 90/30 or 90/70 serial port using SNPX protocol. 3m (9.8ft) RS232C cable, 15-pin D-shell male connector to 15-pin D-shell male connector.</i>	
EZ-MITSU-CBL	740
<i>Shielded cable to connect any EZText or EZTouch panel to a Mitsubishi FX Series CPU. 3m (9.8ft) RS422C cable, 15-pin D-shell male connector to 25-pin D-shell male connector.</i>	
EZ-MITSU-CBL-1	740
<i>Shielded cable to connect any EZText or EZTouch panel to a Mitsubishi FX Series CPU. 3m (9.8ft) RS422C cable, 15-pin D-shell male connector to 8-pin mini DIN connector.</i>	
EZ-S7MPI-CBL	740
<i>Shielded cable to connect any EZText or EZTouch panel to a Siemens Simatic S7 Series CPU. 3m (9.8ft) RS422C cable, 15-pin D-shell male connector to 9-pin D-shell connector.</i>	