

GCX Series 22 mm Metal Pilot Devices

Features

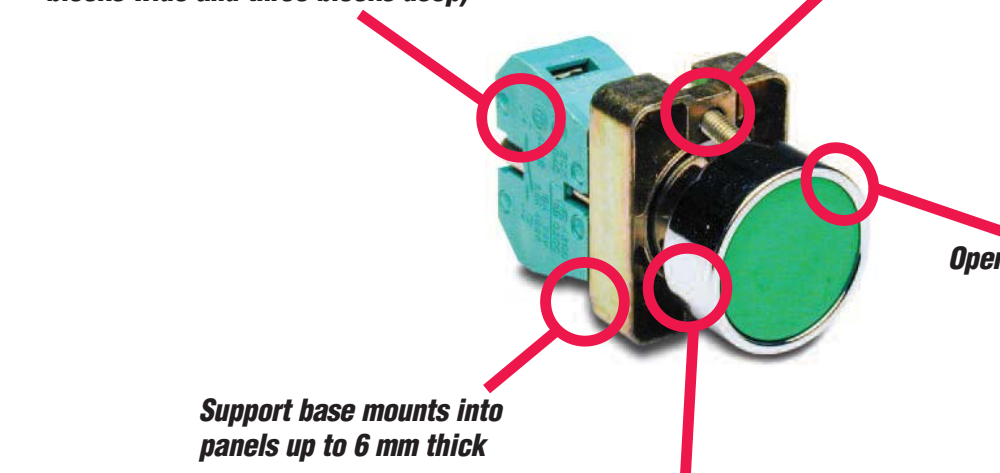
Any combination of contact blocks is allowed, up to a total of six (two blocks wide and three blocks deep)

Secure mounting method eliminates twisting in mounting hole

Operators are protected to IP65

Support base mounts into panels up to 6 mm thick

Chrome-plated alloy bezel is not only corrosion-resistant, but also attractive



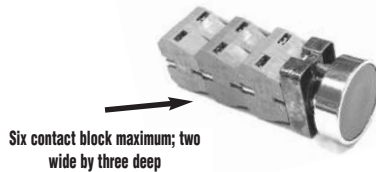
Easy installation



To remove operator, press toward support base and twist counterclockwise.



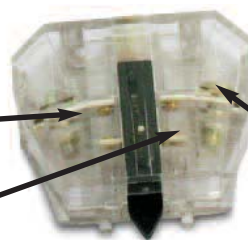
To install switch, place support base against rear of panel (not shown here), insert the operator and twist clockwise until it clicks into place. Carefully tighten the securing screws. Do not over-tighten.



Six contact block maximum; two wide by three deep

Self-cleaning gold-plated silver contacts provide reliable, low-energy switching

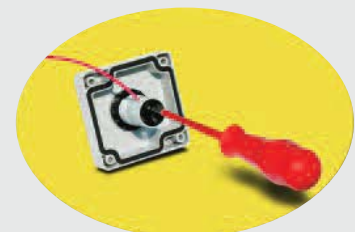
Contacts rated A300
(Refer to E22 Series mounting/contact rating section for details)



Pressure plate wiring terminals for easy, secure wiring, accepting up to 14 AWG wire

Clear contact block for illustration purposes. Clear contact blocks are not available for sale from AutomationDirect.

All indicators offer side wire entry with back screw terminals for easy wiring



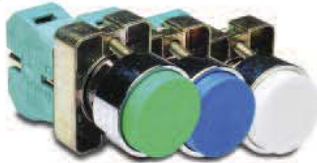
GCX/ECX Series 22 mm Metal Pilot Devices Selection Guide



Flush

- Momentary 30 or 40 mm operators
- Available in six colors: black, red, yellow, blue, white and green
- One contact block included
- ON/OFF models also available

Ours: \$6.50 (GCX1100)
Allen-Bradley: \$32.15* (800F-MX10, 800F-ALM + 800FM-F2)



Extended

- Momentary 30 mm operators
- Available in six colors: black, red, yellow, blue, white and green
- One contact block included

Ours: \$7.25 (GCX1110)
Allen-Bradley: \$34.80* (800F-MX01, 800F-ALM + 800FM-E2)



Two way

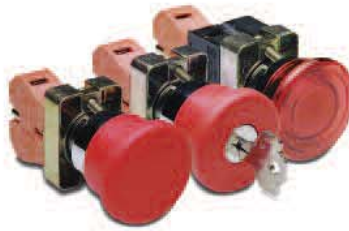
- Two way on/off control
- With or without illuminated indicators
- One NO and one NC contact block included



Illuminated

- Available in clear, red, yellow, blue, white and green; 24 and 120-volt models
- Momentary and push-push styles
- Flush or extended operators available
- Incandescent and LED models
- One contact block included

Ours: \$12.00 (GCX1212-24)
Allen-Bradley: \$19.35* (800FM-LE3 + 800F-ALM, D3C)



Mushroom

- Available in momentary, twist-to-release, and key release models
- One contact block included
- Also available in incandescent and LED illuminated models

Ours: \$12.50 (GCX1131)
Allen-Bradley: \$62.24* (800FM-MT44 + 800F-MX01 + 800F-ALM)



Audible annunciators and potentiometers

- Audible annunciators with or without LED indicator
- 5 and 10 K Ω potentiometers



Selector switches

- Two and three-position in spring return and maintained, non-illuminated and illuminated; incandescent and LED models
- Contact block included

Ours: \$9.75 (GCX1300)
Allen-Bradley: \$38.85* (800FM-SM22 + 800F-MX10 + 800F-ALM)



Key switches

- Two and three-position
- Contact blocks included

Ours: \$18.00 (GCX1420)
Allen-Bradley: \$66.75* (800FM-KM21 + 800F-MX10 + 800F-ALM)



Joysticks

- Two and four-position, maintained and momentary
- Contact blocks included

Ours: \$26.50 (ECX1510)
Allen-Bradley: \$142.00* (800FM-JR2 + 800F-MX20 + 800F-ALM)



Pilot lights

- Available in six colors: red, green, white, clear, yellow and blue
- 24 and 120-volt models with LED
- Frosted diffuser for even lighting
- Incandescent or LED indicators

Ours: \$5.50 (ECX1052-24)
Allen-Bradley: \$44.66* (800FM-P3 + 800F-ALM + 800F-D3C)

Accessories



- One to six-hole enclosures
- Bulbs and LEDs
- Protective actuator caps

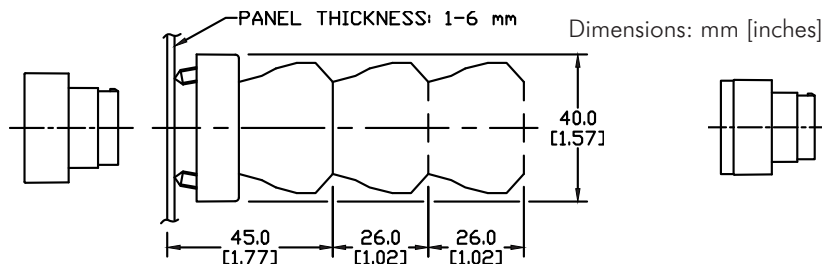
*All prices are U.S. published prices. AutomationDirect's prices are from April 2012 Price List. Prices and specifications may vary by dealer and configuration. Allen-Bradley industrial control component prices from www.rockwellautomation.com/en/e-tools 2/20/12.

GCX Series 22 mm Metal Pilot Devices Specifications

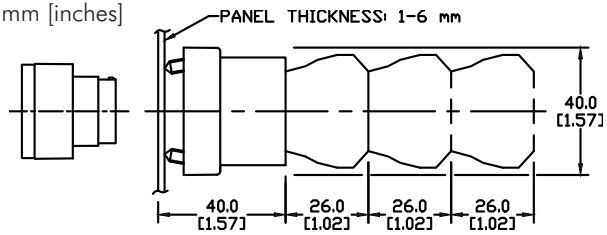
Assembly information

These pushbuttons and indicator lights are supplied with the appropriate contact blocks, unless otherwise indicated. Use these drawings as a guide to make sure there is adequate clearance behind the panel.

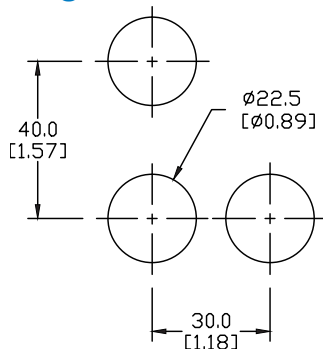
Pushbuttons and selector switches



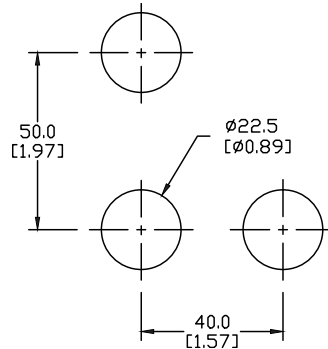
Illuminated pushbuttons and selector switches/pilot lights



Mounting



This layout is suitable if all switches are 230V or less and the same polarity.

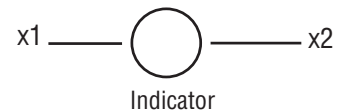
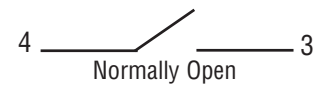


This layout is suitable if all switches are 400V or less and different polarity.

NOTE: Contact blocks can be arranged up to three deep by two wide.



Typical Wiring



Specifications

These specifications apply to all GCX and ECX 22 mm metal pushbuttons and switches.

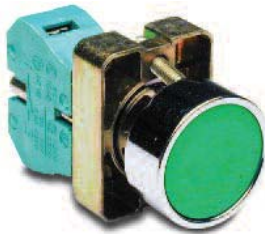
Physical Specifications	
Standards Reference	CEI EN 60947-5-1, CSA C22-2 n.14
Approvals	CSA, IMQ (where specified), UL File E189258
Enclosure Material	Zn + Al + Mg alloy, chromium plated
Contacts Material	Silver
Protection Degree	IP 40 for GCX3151-24, GCX3151-120, GCX3153-24 and GCX3153-120. IP 65 for all others. (See Appendix of this catalog for explanation of IP ratings according to IEC 144 CEI 70-1.)
Temperature Ratings	Storage: -40° to 80°C (-40° to 176° F) Operating: -25° to +70°C (-13° to 158° F)
Working Positions	All working positions are allowed
Mechanical Life	Pushbuttons, selector switches: Joy stick switches: 1,000,000 operations Mushroom pushbuttons: 300,000 operations

Electrical Specifications	
Rated Thermal Current (contact block)	A300, Q300 (Refer to E22 Series mounting/contact rating section for details)
Rated Insulation Voltage	Ui 660V according to CEI EN 60947-5-1, 300V according to CSA C22-2 n.14
Dielectric Strength	3kV (1 second)
Insulation Resistance	2MΩ min. (500VDC)
Initial Contact Resistance	≤25mΩ
Short-Circuit Protection*	Cartridge fuses gl 10 A-500V 10,3x38l1 100 KA
Terminal Markings	According to CENELEC EN 50013
Connections	Single screw with non-loosening plate clamp, 14AWG max.
Contacts Operation	Self-cleaning types EN01 (N.C.) EN 10 (N.O.) slow action, positive opening
Operation Frequency	3600 operations per hour max.
Utilization Category	AC15 (Control of AC electromagnetic loads) 24 volts AC at 10 amps 130 volts AC at 6.5 amps DC13 (Control of DC electromagnetic loads) 24 volts DC at 1.5 amps 110 volts DC at 0.5 amps

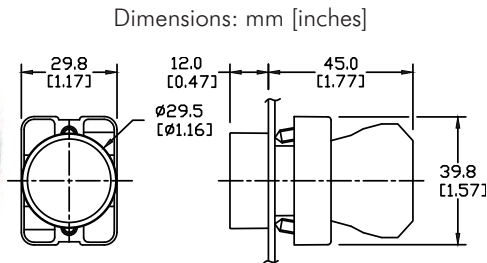
*Note: Recommended, not supplied

GCX Series 22 mm Metal Pushbuttons

Momentary flush pushbuttons with protective metal ring (30 mm dia. actuator)

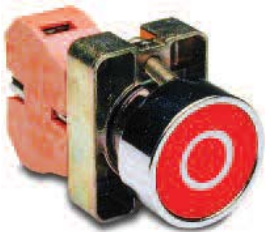


GCX1102

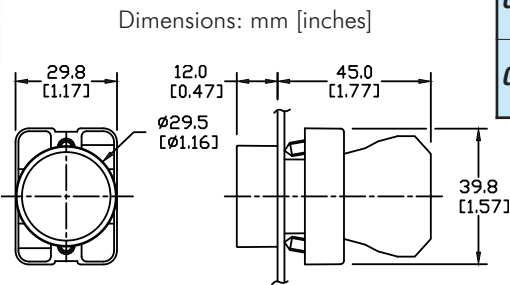


Part Number	Color	Price	Description
GCX1100	Black	<--->	One N.O. contact block, 30 mm dia. actuator, mounts in 22 mm hole
GCX1101	Red	<--->	One N.C. contact block, 30 mm dia. actuator, mounts in 22 mm hole
GCX1102	Green	<--->	One N.O. contact block, 30 mm dia. actuator, mounts in 22 mm hole
GCX1103	Yellow	<--->	
GCX1104	Blue	<--->	
GCX1105	White	<--->	

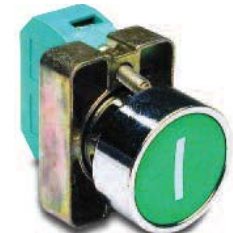
Momentary Flush ON/OFF pushbuttons with protective metal ring (30 mm dia. actuator)



GCX1106



Part Number	Color	Price	Description
GCX1106	Red with "Off" symbol (O) on actuator	<--->	One N.C. contact block, 30 mm dia. actuator, mounts in 22 mm hole
GCX1107	Green with "On" symbol (I) on actuator	<--->	One N.O. contact block, 30 mm dia. actuator, mounts in 22 mm hole

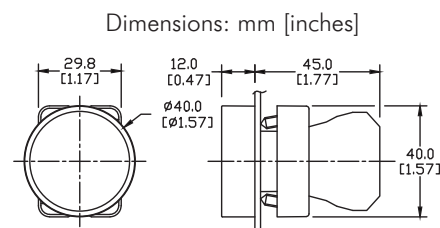


GCX1107

Momentary Pushbuttons with protective metal ring (40 mm dia. actuator)



GCX1121



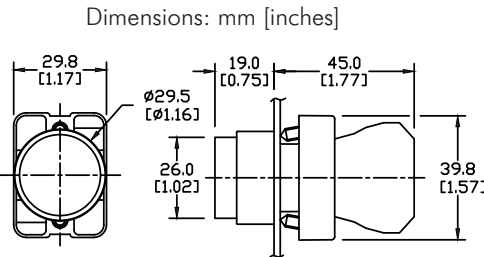
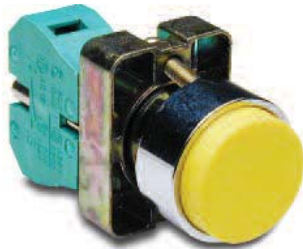
Part Number	Color	Price	Description
GCX1120	Black	<--->	One N.O. contact block, 40mm dia. actuator, mounts in 22 mm hole
GCX1121	Red	<--->	One N.C. contact block, 40mm dia. actuator, mounts in 22 mm hole
GCX1122	Green	<--->	One N.O. contact block, 40mm dia. actuator, mounts in 22 mm hole
GCX1123	Yellow	<--->	
GCX1124	Blue	<--->	
GCX1125	White	<--->	

Note: Protective silicone covers are not available for this pushbutton.

For accessories, see 22 mm Metal Pilot Device Accessories in this section.

GCX Series 22 mm Metal Pushbuttons

Momentary extended pushbuttons



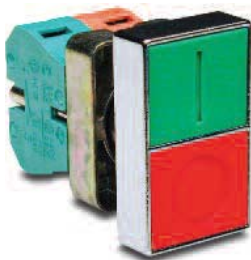
Part Number	Color	Price	Description
GCX1110	Black	<-->	One N.O. contact block, extended 30 mm dia. actuator, mounts in 22 mm hole
GCX1111	Red	<-->	One N.C. contact block, extended 30 mm dia. actuator, mounts in 22 mm hole
GCX1112	Green	<-->	One N.O. contact block, extended 30 mm dia. actuator, mounts in 22 mm hole
GCX1113	Yellow	<-->	
GCX1114	Blue	<-->	
GCX1115	White	<-->	

GCX1113

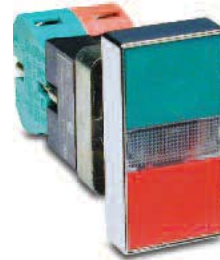
Double-headed momentary pushbuttons

Part Number	Price	Double-headed Momentary Pushbuttons Description
GCX1150	<-->	Double-headed for on/off control, One N.O. and one N.C. contact block, fits in 22 mm dia. hole, without symbols
GCX1151-24	<-->	24VDC/VAC double-headed with indicator, faces without symbols. One N.O. and one N.C. contact block, fits in 22 mm dia. hole
GCX1151-120	<-->	120VDC/VAC double-headed with indicator, faces without symbols. One N.O. and one N.C. contact block, fits in 22 mm dia. hole
GCX1152	<-->	Double-headed for on/off control. One N.O. and one N.C. contact block, fits in 22 mm dia. hole. With ON(I) and OFF (O) symbols
GCX1153-24*	<-->	24VDC/VAC double-headed with indicator, with ON (1) and OFF (0) symbols. One N.O. and one N.C. contact block
GCX1153-120*	<-->	120VDC/AC double-headed with indicator, with ON (1) and OFF (0) symbols. One N.O. and one N.C. contact block

* Note: Lamp data in 22 mm Metal Pilot Accessories in this section.

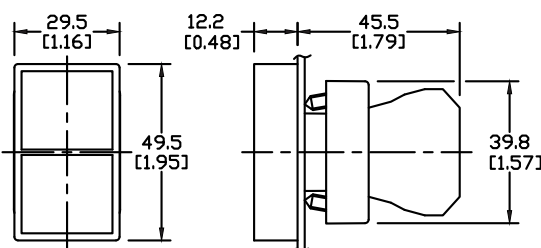


GCX1152 (with on/off symbols)

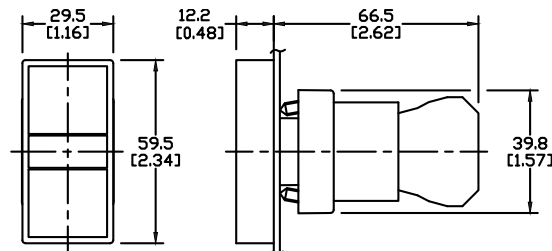


GCX1151-24

Dimensions: mm [inches]



GCX1150, GCX1152 models

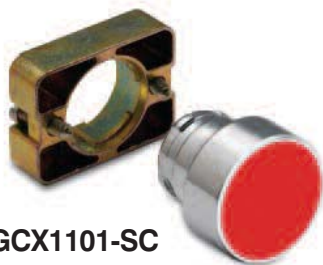


GCX1151-24, GCX1153-24,
GCX1151-120, GCX1153-120 models

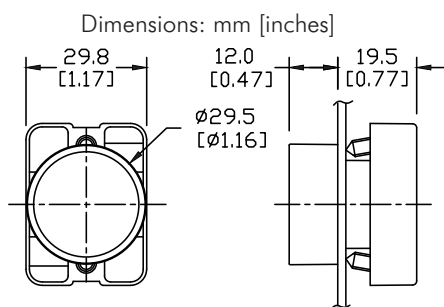
For accessories, see 22 mm Metal Pilot Device Accessories in this section.

GCX Series 22 mm Metal Pushbuttons without Contact Block

Momentary flush pushbutton operator (without contact block) (30 mm dia. actuator)



GCX1101-SC



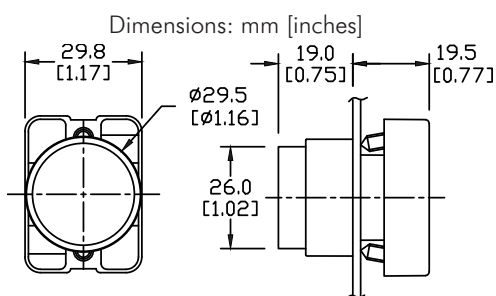
NOTE: Contact block sold separately

Part Number	Color	Price	Description
GCX1100-SC	Black	<-->	22 mm metal pushbutton operator, flush, includes 30 mm dia. operator and support base ONLY. Contact blocks sold separately, mounts in 22 mm hole.
GCX1101-SC	Red	<-->	22 mm metal pushbutton operator, flush, includes 30 mm dia. operator and support base ONLY. Contact blocks sold separately, mounts in 22 mm hole.
GCX1102-SC	Green	<-->	22 mm metal pushbutton operator, flush, includes 30 mm dia. operator and support base ONLY. Contact blocks sold separately, mounts in 22 mm hole.

Momentary extended pushbutton operator (without contact block) (30 mm dia. actuator)



GCX1112-SC



NOTE: Contact block sold separately

Part Number	Color	Price	Description
GCX1110-SC	Black	<-->	22 mm metal pushbutton operator, extended, includes 30 mm dia. operator and support base ONLY. Contact block sold separately, mounts in 22 mm hole
GCX1111-SC	Red	<-->	22 mm metal pushbutton operator, extended, includes 30 mm dia. operator and support base ONLY. Contact block sold separately, mounts in 22 mm hole
GCX1112-SC	Green	<-->	22 mm metal pushbutton operator, extended, includes 30 mm dia. operator and support base ONLY. Contact block sold separately, mounts in 22 mm hole

Contact blocks are available for these products. See accessories.



ECX1040-2

ECX1030-2

For accessories, see 22 mm Metal Pilot Device Accessories in this section.

GCX Series 22 mm Metal Illuminated Pushbuttons

Momentary pushbuttons with protective plastic ring

24 models available:

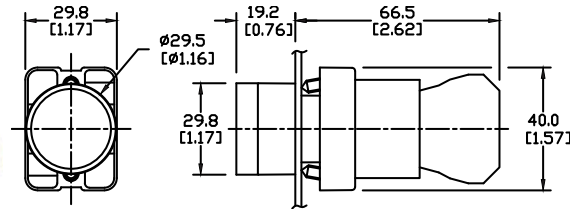
- Protective plastic ring for flush mount pushbutton functionality
- Includes incandescent bulb or LED lamp
- 24V and 120V models
- Available in six colors

All pushbuttons include operator, mounting adapter, chrome plated alloy bezel, indicating bulb (if applicable), and contact block. They are shipped unassembled. Legend plate is not included and must be ordered separately. All switches in this series use replacement contact block ECX1030 (Red, N.C.) or ECX1040 (Green, N.O.), sold separately in packages of two or five.



GCX1202-24

Dimensions: mm [inches]



Part Number	Lamp Color	Price	Description	Replacement Incandescent Bulb	Replacement LED Lamp
Incandescent					
GCX1201-24	Red	<--->	22 mm metal incandescent illuminated pushbutton, 24VDC/VAC. One N.C. contact block	ECX1902-5 5/pk, 80mA	ECX1911-2 2/pk, 26mA
GCX1201-120	Red	<--->	22 mm metal incandescent illuminated pushbutton, 120VDC/VAC. One N.C. contact block	ECX1904-5 5/pk, 20mA	ECX1921-2 2/pk, 5mA
GCX1202-24	Green	<--->	22 mm metal incandescent illuminated pushbutton, 24VDC/VAC. One N.O. contact block	ECX1902-5 5/pk, 80mA	ECX1912-2 2/pk, 26mA
GCX1202-120	Green	<--->	22 mm metal incandescent illuminated pushbutton, 120VDC/VAC. One N.O. contact block	ECX1904-5 5/pk, 20mA	ECX1922-2 2/pk, 5mA
GCX1203-24	Yellow	<--->	22 mm metal incandescent illuminated pushbutton, 24VDC/VAC. One N.O. contact block	ECX1902-5 5/pk, 80mA	ECX1913-2 2/pk, 26mA
GCX1203-120	Yellow	<--->	22 mm metal incandescent illuminated pushbutton, 120VDC/VAC. One N.O. contact block	ECX1904-5 5/pk, 20mA	ECX1923-2 2/pk, 5mA
GCX1204-24	Blue	<--->	22 mm metal incandescent illuminated pushbutton, 24VDC/VAC. One N.O. contact block	ECX1902-5 5/pk, 80mA	ECX1914-2 2/pk, 26mA
GCX1204-120	Blue	<--->	22 mm metal incandescent illuminated pushbutton, 120VDC/VAC. One N.O. contact block	ECX1904-5 5/pk, 20mA	ECX1924-2 2/pk, 5mA
GCX1205-24	Clear	<--->	22 mm metal incandescent illuminated pushbutton, 24VDC/VAC. One N.O. contact block	ECX1902-5 5/pk, 80mA	ECX1915-2 2/pk, 26mA
GCX1205-120	Clear	<--->	22 mm metal incandescent illuminated pushbutton, 120VDC/VAC. One N.O. contact block	ECX1904-5 5/pk, 20mA	ECX1925-2 2/pk, 5mA
GCX1206-24	White	<--->	22 mm metal incandescent illuminated pushbutton, 24VDC/VAC. One N.O. contact block	ECX1902-5 5/pk, 80mA	ECX1915-2 2/pk, 26mA
GCX1206-120	White	<--->	22 mm metal incandescent illuminated pushbutton, 120VDC/VAC. One N.O. contact block	ECX1904-5 5/pk, 20mA	ECX1925-2 2/pk, 5mA
LED					
GCX1201-24L	Red	<--->	22 mm metal LED illuminated pushbutton, 24 VDC/VAC. One N.C. contact block	ECX1902-5 5/pk, 80mA	ECX1911-2 2/pk, 26mA
GCX1201-120L	Red	<--->	22 mm metal LED illuminated pushbutton, 120 VDC/VAC. One N.C. contact block	ECX1904-5 5/pk, 20mA	ECX1921-2 2/pk, 5mA
GCX1202-24L	Green	<--->	22 mm metal LED illuminated pushbutton, 24 VDC/VAC. One N.O. contact block	ECX1902-5 5/pk, 80mA	ECX1912-2 2/pk, 26mA
GCX1202-120L	Green	<--->	22 mm metal LED illuminated pushbutton, 120 VDC/VAC. One N.O. contact block	ECX1904-5 5/pk, 20mA	ECX1922-2 2/pk, 5mA
GCX1203-24L	Yellow	<--->	22 mm metal LED illuminated pushbutton, 24 VDC/VAC. One N.O. contact block	ECX1902-5 5/pk, 80mA	ECX1913-2 2/pk, 26mA
GCX1203-120L	Yellow	<--->	22 mm metal LED illuminated pushbutton, 120 VDC/VAC. One N.O. contact block	ECX1904-5 5/pk, 20mA	ECX1923-2 2/pk, 5mA
GCX1204-24L	Blue	<--->	22 mm metal LED illuminated pushbutton, 24 VDC/VAC. One N.O. contact block	ECX1902-5 5/pk, 80mA	ECX1914-2 2/pk, 26mA
GCX1204-120L	Blue	<--->	22 mm metal LED illuminated pushbutton, 120 VDC/VAC. One N.O. contact block	ECX1904-5 5/pk, 20mA	ECX1924-2 2/pk, 5mA
GCX1205-24L	Clear	<--->	22 mm metal LED illuminated pushbutton, 24 VDC/VAC. One N.O. contact block	ECX1902-5 5/pk, 80mA	ECX1915-2 2/pk, 26mA
GCX1205-120L	Clear	<--->	22 mm metal LED illuminated pushbutton, 120 VDC/VAC. One N.O. contact block	ECX1904-5 5/pk, 20mA	ECX1925-2 2/pk, 5mA
GCX1206-24L	White	<--->	22 mm metal LED illuminated pushbutton, 24 VDC/VAC. One N.O. contact block	ECX1902-5 5/pk, 80mA	ECX1915-2 2/pk, 26mA
GCX1206-120L	White	<--->	22 mm metal LED illuminated pushbutton, 120 VDC/VAC. One N.O. contact block	ECX1904-5 5/pk, 20mA	ECX1925-2 2/pk, 5mA

For accessories, see 22 mm Metal Pilot Device Accessories in this section.

GCX Series 22 mm Metal Illuminated Pushbuttons

Momentary pushbuttons with extended actuator

25 models available:

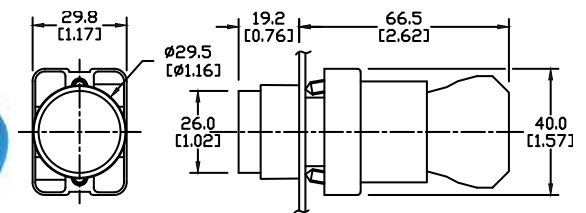
- Protective plastic ring for flush mount pushbutton functionality
- Includes incandescent bulb or LED lamp
- 24V and 120V models
- Available in six colors

All pushbuttons include operator, mounting adapter, chrome plated alloy bezel, indicating bulb (if applicable), and contact block. They are shipped unassembled. Legend plate is not included and must be ordered separately. All switches in this series use replacement contact block ECX1030 (Red, N.C.) or ECX1040 (Green, N.O.), sold separately in packages of two or five.



GCX1214-24

Dimensions: mm [inches]



Part Number	Lamp Color	Price	Description	Replacement Incandescent Bulb	Replacement LED Lamp
Incandescent					
GCX1211-24	Red	<--->	22 mm metal extended incandescent illuminated pushbutton, 24VDC/VAC. One N.C. contact block	ECX1902-5 5/pk 80mA	ECX1911-2 2/pk, 26mA
GCX1211-120	Red	<--->	22 mm metal extended incandescent illuminated pushbutton, 120VDC/VAC. One N.C. contact block	ECX1904-5 5/pk 20mA	ECX1921-2 2/pk, 5mA
GCX1212-24	Green	<--->	22 mm metal extended incandescent illuminated pushbutton, 24VDC/VAC. One N.O. contact block	ECX1902-5 5/pk 80mA	ECX1912-2 2/pk, 26mA
GCX1212-120	Green	<--->	22 mm metal extended incandescent illuminated pushbutton, 120VDC/VAC. One N.O. contact block	ECX1904-5 5/pk 20mA	ECX1922-2 2/pk, 5mA
GCX1213-24	Yellow	<--->	22 mm metal extended incandescent illuminated pushbutton, 24VDC/VAC. One N.O. contact block	ECX1902-5 5/pk 80mA	ECX1913-2 2/pk, 26mA
GCX1213-120	Yellow	<--->	22 mm metal extended incandescent illuminated pushbutton, 120VDC/VAC. One N.O. contact block	ECX1904-5 5/pk 20mA	ECX1923-2 2/pk, 5mA
GCX1214-24	Blue	<--->	22 mm metal extended incandescent illuminated pushbutton, 24VDC/VAC. One N.O. contact block	ECX1902-5 5/pk 80mA	ECX1914-2 2/pk, 26mA
GCX1214-120	Blue	<--->	22 mm metal extended incandescent illuminated pushbutton, 120VDC/VAC. One N.O. contact block	ECX1904-5 5/pk 20mA	ECX1924-2 2/pk, 5mA
GCX1215-24	Clear	<--->	22 mm metal extended incandescent illuminated pushbutton, 24VDC/VAC. One N.O. contact block	ECX1902-5 5/pk 80mA	ECX1915-2 2/pk, 26mA
GCX1215-120	Clear	<--->	22 mm metal extended incandescent illuminated pushbutton, 120VDC/VAC. One N.O. contact block	ECX1904-5 5/pk 20mA	ECX1925-2 2/pk, 5mA
GCX1216-24	White	<--->	22 mm metal extended incandescent illuminated pushbutton, 24VDC/VAC. One N.O. contact block	ECX1902-5 5/pk 80mA	ECX1915-2 2/pk, 26mA
GCX1216-120	White	<--->	22 mm metal extended incandescent illuminated pushbutton, 120VDC/VAC. One N.O. contact block	ECX1904-5 5/pk 20mA	ECX1925-2 2/pk, 5mA
LED					
GCX1211-24L	Red	<--->	22 mm metal extended LED illuminated pushbutton, 24VDC/VAC. One N.C. contact block	ECX1902-5 5/pk 80mA	ECX1911-2 2/pk, 26mA
GCX1211-120L	Red	<--->	22 mm metal extended LED illuminated pushbutton, 120VDC/VAC. One N.C. contact block	ECX1904-5 5/pk 20mA	ECX1921-2 2/pk, 5mA
GCX1211-120LA	Red	<--->	22 mm metal extended LED illuminated pushbutton, 120VDC/VAC. One N.O. contact block	ECX1902-5 5/pk 80mA	ECX1921-2 2/pk, 5mA
GCX1212-24L	Green	<--->	22 mm metal extended LED illuminated pushbutton, 24VDC/VAC. One N.O. contact block	ECX1904-5 5/pk 20mA	ECX1912-2 2/pk, 26mA
GCX1212-120L	Green	<--->	22 mm metal extended LED illuminated pushbutton, 120VDC/VAC. One N.O. contact block	ECX1902-5 5/pk 80mA	ECX1922-2 2/pk, 5mA
GCX1213-24L	Yellow	<--->	22 mm metal extended LED illuminated pushbutton, 24VDC/VAC. One N.O. contact block	ECX1904-5 5/pk 20mA	ECX1913-2 2/pk, 26mA
GCX1213-120L	Yellow	<--->	22 mm metal extended LED illuminated pushbutton, 120VDC/VAC. One N.O. contact block	ECX1902-5 5/pk 80mA	ECX1923-2 2/pk, 5mA
GCX1214-24L	Blue	<--->	22 mm metal extended LED illuminated pushbutton, 24VDC/VAC. One N.O. contact block	ECX1904-5 5/pk 20mA	ECX1914-2 2/pk, 26mA
GCX1214-120L	Blue	<--->	22 mm metal extended LED illuminated pushbutton, 120VDC/VAC. One N.O. contact block	ECX1902-5 5/pk 80mA	ECX1924-2 2/pk, 5mA
GCX1215-24L	Clear	<--->	22 mm metal extended LED illuminated pushbutton, 24VDC/VAC. One N.O. contact block	ECX1904-5 5/pk 20mA	ECX1915-2 2/pk, 26mA
GCX1215-120L	Clear	<--->	22 mm metal extended LED illuminated pushbutton, 120VDC/VAC. One N.O. contact block	ECX1902-5 5/pk 80mA	ECX1925-2 2/pk, 5mA
GCX1216-24L	White	<--->	22 mm metal extended LED illuminated pushbutton, 24VDC/VAC. One N.O. contact block	ECX1904-5 5/pk 20mA	ECX1915-2 2/pk, 26mA
GCX1216-120L	White	<--->	22 mm metal extended LED illuminated pushbutton, 120VDC/VAC. One N.O. contact block	ECX1925-2 2/pk 5mA	ECX1925-2 2/pk, 5mA

For accessories, see 22 mm Metal Pilot Device Accessories in this section.

GCX Series 22 mm Metal Illuminated Pushbuttons

Push-push style pushbuttons with protective plastic ring

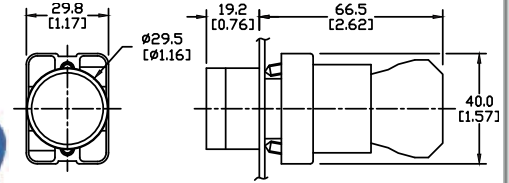
24 models available:

- Protective plastic ring for flush mount pushbutton functionality
- Includes incandescent bulb or LED lamp
- 24V and 120V models
- Available in six colors
- These switches are supplied with a special N.O. contact block designed for use with this actuator, but they also work with standard N.C. contacts

All switches in this series use replacement contact block ECX1042-2 (Brown, N.O.) or ECX1030-5 or ECX1030-2 (Red, N.C.), sold separately.



Dimensions: mm [inches]



GCX1194-24

Part Number	Lamp Color	Price	Description	Replacement Incandescent Bulb	Replacement LED Lamp
Incandescent					
GCX1191-24	Red	<--->	22 mm metal incandescent illuminated pushbutton, 24VDC/VAC. One N.O. contact block. Flush Push ON - Push OFF operator with colored plastic ring.	ECX1902-5 5/pk, 80mA	ECX1911-2 2/pk, 26mA
GCX1191-120	Red	<--->	22 mm metal incandescent illuminated pushbutton, 120VDC/VAC. One N.O. contact block. Flush Push ON - Push OFF operator with colored plastic ring.	ECX1904-5 5/pk, 20mA	ECX1921-2 2/pk, 5mA
GCX1192-24	Green	<--->	22 mm metal incandescent illuminated pushbutton, 24VDC/VAC. One N.O. contact block. Flush Push ON - Push OFF operator with colored plastic ring.	ECX1902-5 5/pk, 80mA	ECX1912-2 2/pk, 26mA
GCX1192-120	Green	<--->	22 mm metal incandescent illuminated pushbutton, 120VDC/VAC. One N.O. contact block. Flush Push ON - Push OFF operator with colored plastic ring.	ECX1904-5 5/pk, 20mA	ECX1922-2 2/pk, 5mA
GCX1193-24	Yellow	<--->	22 mm metal incandescent illuminated pushbutton, 24VDC/VAC. One N.O. contact block. Flush Push ON - Push OFF operator with colored plastic ring.	ECX1902-5 5/pk, 80mA	ECX1913-2 2/pk, 26mA
GCX1193-120	Yellow	<--->	22 mm metal incandescent illuminated pushbutton, 120VDC/VAC. One N.O. contact block. Flush Push ON - Push OFF operator with colored plastic ring.	ECX1904-5 5/pk, 20mA	ECX1923-2 2/pk, 5mA
GCX1194-24	Blue	<--->	22 mm metal incandescent illuminated pushbutton, 24VDC/VAC. One N.O. contact block. Flush Push ON - Push OFF operator with colored plastic ring.	ECX1902-5 5/pk, 80mA	ECX1914-2 2/pk, 26mA
GCX1194-120	Blue	<--->	22 mm metal incandescent illuminated pushbutton, 120VDC/VAC. One N.O. contact block. Flush Push ON - Push OFF operator with colored plastic ring.	ECX1904-5 5/pk, 20mA	ECX1924-2 2/pk, 5mA
GCX1195-24	Clear	<--->	22 mm metal incandescent illuminated pushbutton, 24VDC/VAC. One N.O. contact block. Flush Push ON - Push OFF operator with colored plastic ring.	ECX1902-5 5/pk, 80mA	ECX1915-2 2/pk, 26mA
GCX1195-120	Clear	<--->	22 mm metal incandescent illuminated pushbutton, 120VDC/VAC. One N.O. contact block. Flush Push ON - Push OFF operator with colored plastic ring.	ECX1904-5 5/pk, 20mA	ECX1925-2 2/pk, 5mA
GCX1196-24	White	<--->	22 mm metal incandescent illuminated pushbutton, 24VDC/VAC. One N.O. contact block. Flush Push ON - Push OFF operator with colored plastic ring.	ECX1902-5 5/pk, 80mA	ECX1915-2 2/pk, 26mA
GCX1196-120	White	<--->	22 mm metal incandescent illuminated pushbutton, 120VDC/VAC. One N.O. contact block. Flush Push ON - Push OFF operator with colored plastic ring.	ECX1904-5 5/pk, 20mA	ECX1925-2 2/pk, 5mA
LED					
GCX1191-24L	Red	<--->	22 mm metal LED illuminated pushbutton, 24 VDC/VAC. One N.O. contact block. Flush Push ON - Push OFF operator with colored plastic ring	ECX1902-5 5/pk, 80mA	ECX1911-2 2/pk, 26mA
GCX1191-120L	Red	<--->	22 mm metal LED illuminated pushbutton, 120 VDC/VAC. One N.O. contact block. Flush Push ON - Push OFF operator with colored plastic ring	ECX1904-5 5/pk, 20mA	ECX1921-2 2/pk, 5mA
GCX1192-24L	Green	<--->	22 mm metal LED illuminated pushbutton, 24 VDC/VAC. One N.O. contact block. Flush Push ON - Push OFF operator with colored plastic ring	ECX1902-5 5/pk, 80mA	ECX1912-2 2/pk, 26mA
GCX1192-120L	Green	<--->	22 mm metal LED illuminated pushbutton, 120 VDC/VAC. One N.O. contact block. Flush Push ON - Push OFF operator with colored plastic ring	ECX1904-5 5/pk, 20mA	ECX1922-2 2/pk, 5mA
GCX1193-24L	Yellow	<--->	22 mm metal LED illuminated pushbutton, 24 VDC/VAC. One N.O. contact block. Flush Push ON - Push OFF operator with colored plastic ring	ECX1902-5 5/pk, 80mA	ECX1913-2 2/pk, 26mA
GCX1193-120L	Yellow	<--->	22 mm metal LED illuminated pushbutton, 120 VDC/VAC. One N.O. contact block. Flush Push ON - Push OFF operator with colored plastic ring	ECX1904-5 5/pk, 20mA	ECX1923-2 2/pk, 5mA
GCX1194-24L	Blue	<--->	22 mm metal LED illuminated pushbutton, 24 VDC/VAC. One N.O. contact block. Flush Push ON - Push OFF operator with colored plastic ring	ECX1902-5 5/pk, 80mA	ECX1914-2 2/pk, 26mA
GCX1194-120L	Blue	<--->	22 mm metal LED illuminated pushbutton, 120 VDC/VAC. One N.O. contact block. Flush Push ON - Push OFF operator with colored plastic ring	ECX1904-5 5/pk, 20mA	ECX1924-2 2/pk, 5mA
GCX1195-24L	Clear	<--->	22 mm metal LED illuminated pushbutton, 24 VDC/VAC. One N.O. contact block. Flush Push ON - Push OFF operator with colored plastic ring	ECX1902-5 5/pk, 80mA	ECX1915-2 2/pk, 26mA
GCX1195-120L	Clear	<--->	22 mm metal LED illuminated pushbutton, 120 VDC/VAC. One N.O. contact block. Flush Push ON - Push OFF operator with colored plastic ring	ECX1904-5 5/pk, 20mA	ECX1925-2 2/pk, 5mA
GCX1196-24L	White	<--->	22 mm metal LED illuminated pushbutton, 24 VDC/VAC. One N.O. contact block. Flush Push ON - Push OFF operator with colored plastic ring	ECX1902-5 5/pk, 80mA	ECX1915-2 2/pk, 26mA
GCX1196-120L	White	<--->	22 mm metal LED illuminated pushbutton, 120 VDC/VAC. One N.O. contact block. Flush Push ON - Push OFF operator with colored plastic ring	ECX1904-5 5/pk, 20mA	ECX1925-2 2/pk, 5mA

For accessories, see 22 mm Metal Pilot Device Accessories in this section.

GCX Series 22 mm Metal Illuminated Pushbuttons

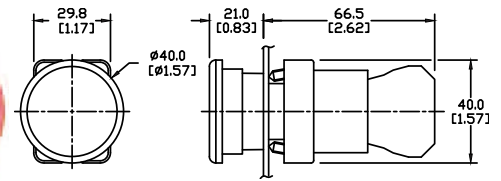
Mushroom-style illuminated pushbuttons

All pushbuttons include operator, mounting adapter, chrome plated alloy bezel, indicating bulb (if applicable), and contact block. They are shipped unassembled. Legend plate is not included and must be ordered separately. All switches in this series use replacement contact block ECX1030 (Red, N.C.) or ECX1040 (Green, N.O.), sold separately in packages of two or five.



GCX1221-24

Dimensions: mm [inches]



Part Number	Lamp Color	Price	Mushroom-style Illuminated Pushbuttons Description	Replacement Bulbs
Incandescent				
GCX1221-24	Red	<--->	22 mm metal incandescent momentary pushbutton with incandescent illuminated 40 mm mushroom actuator, 24VDC/VAC, one N.C. contact block	ECX1902-5 5/pk 80mA
GCX1221-120	Red	<--->	22 mm metal incandescent momentary pushbutton with incandescent illuminated 40 mm mushroom actuator, 120VDC/VAC, one N.C. contact block	ECX1904-5 5/pk 20mA
GCX1226-24	Red	<--->	22 mm metal incandescent pushbutton with incandescent illuminated 40 mm mushroom twist-to-release actuator, 24VDC/VAC, one N.C. contact block	ECX1902-5 5/pk 80mA
GCX1226-120	Red	<--->	22 mm metal incandescent pushbutton with incandescent illuminated 40 mm mushroom twist-to-release actuator, 120VDC/VAC, one N.C. contact block	ECX1904-5 5/pk 20mA
LED				
GCX1221-24L	Red	<--->	22 mm metal momentary pushbutton with LED illuminated 40 mm mushroom actuator, 24VDC/VAC, one N.C. contact block	ECX1911-2 2/pk 26mA
GCX1221-120L	Red	<--->	22 mm metal momentary pushbutton with LED illuminated 40 mm mushroom actuator, 120VDC/VAC, one N.C. contact block	ECX1921-2 2/pk 5mA
GCX1226-24L	Red	<--->	22 mm metal pushbutton with LED illuminated 40 mm mushroom twist-to-release actuator, 24VDC/VAC, one N.C. contact block	ECX1911-2 2/pk 26mA
GCX1226-120L	Red	<--->	22 mm metal pushbutton with LED illuminated 40 mm mushroom twist-to-release actuator, 120VDC/VAC, one N.C. contact block	ECX1921-2 2/pk 5mA

Non-Illuminated Mushroom pushbuttons

Has large 60 mm dia. actuator and mounts in standard 22 mm hole



GCX1137

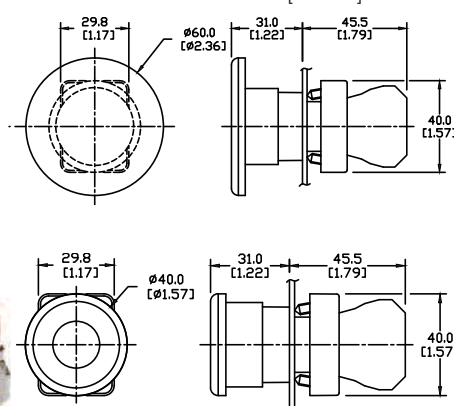


GCX1141
(key operated)



Note: Keyed switches come with two keys. All metal 22 mm keyed switches are keyed alike. Replacement keys are available. Order part no. ECX1067-2 (pkg. of 2).

Dimensions: mm [inches]

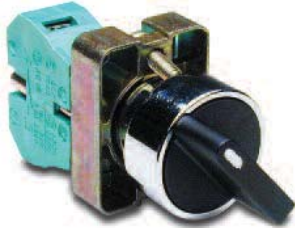


Part Number	Color	Price	Description
GCX1131	Red	<--->	Twist-to-release actuator with one N.C. contact block, fits in 22 mm dia. hole. Has large 40 mm dia. mushroom-style actuator.
GCX1134	Black	<--->	Momentary action with one N.O. contact block, fits in 22 mm dia. hole, has large 40 mm dia. mushroom-style actuator.
GCX1135	Red	<--->	Momentary action with one N.C. contact block, fits in 22 mm dia. hole, has large 40 mm dia. mushroom-style actuator. "Emergency" legend plate available (see Accessories).
GCX1136	Red	<--->	Twist-to-release actuator with one N.C. contact block, fits in 22 mm dia. hole. 60 mm mushroom-style actuator.
GCX1137	Red	<--->	Momentary action with one N.C. contact block, fits in 22 mm dia. hole, has large 60 mm dia. mushroom-style. "Emergency" legend plate available (see Accessories).
GCX1139	Yellow	<--->	Momentary action with one N.O. contact block, fits in 22 mm dia. hole, has large 40 mm dia. mushroom-style actuator.
GCX1141	Red	<--->	Key operated release with one N.C. contact block, fits in 22 mm dia. hole, has large 40 mm dia. mushroom-style actuator. "Emergency" legend plate available (see Accessories).

For accessories, see 22 mm Metal Pilot Device Accessories in this section.

GCX Series 22 mm Metal Selector Switches

Two-position selector switches



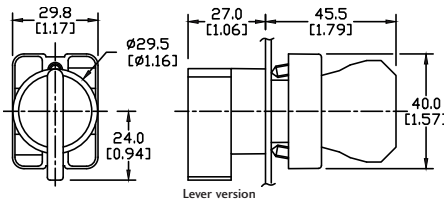
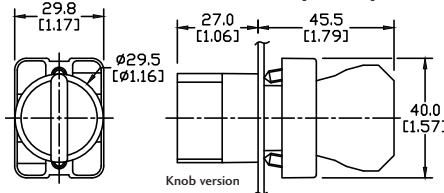
GCX1300 Knob version



GCX1350 Lever version

Part Number	Price	Description - 2-Position Switches
GCX1300	<-->	22 mm metal selector switch, two-position maintained , black knob. One N.O. contact block
GCX1310	<-->	22 mm metal selector switch, two-position spring-return from right , black knob. One N.O. contact block
GCX1350	<-->	22 mm metal selector switch, two-position maintained , black lever. One N.O. contact block
GCX1360	<-->	22 mm metal selector switch, two-position spring-return from right , black lever. One N.O. contact block

Dimensions: mm [inches]



Contact Closure Sequence - 2-Position Switch

Contact Blocks	Contact Arrangement (viewed from front)		Switch Position (viewed from front)	
	Left	Right	Left (Note 1)	Right (Note 2)
1 x NC	NC		X	
		NC	X	
1 x NO	NO			X
		NO		X
2 x NC	NC	NC	XX	
2 x NO	NO	NO		XX

Note 1: Left switch position deactivates all contacts.
Note 2: Right switch position activates all contacts.

Three-position selector switches



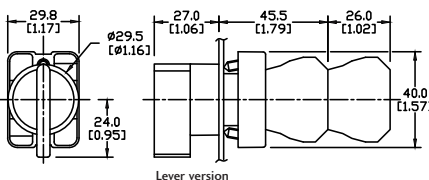
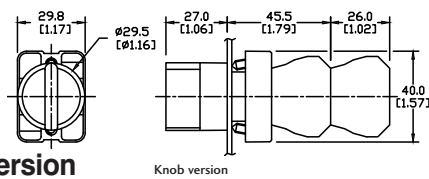
GCX1320-22 Knob version



GCX1370-22 Lever version

Part Number	Price	Description - 3-Position Switches
GCX1320-22	<-->	22 mm metal selector switch, three-position maintained , black knob, Two N.O. and two N.C. contact blocks
GCX1330-22	<-->	22 mm metal selector switch, three-position spring-return to center , black knob, Two N.O. and two N.C. contact blocks
GCX1370-22	<-->	22 mm metal selector switch, three-position maintained , black lever, Two N.O. and two N.C. contact blocks
GCX1380-22	<-->	22 mm metal selector switch, three-position spring-return to center , black lever, Two N.O. and two N.C. contact blocks

Dimensions: mm [inches]



Contact Closure Sequence - 3-Position Switch

Contact Blocks	Contact Arrangement (viewed from front)		Switch Position (viewed from front)		
	Left	Right	Left (Note 1)	Center (Note 2)	Right (Note 3)
1 x NC	NC			X	X
		NC	X	X	
1 x NO	NO		X		
		NO			X
2 x NC	NC	NC	X	XX	X
2 x NO	NO	NO	X		X

Note 1: Left switch position activates left side contacts (viewed from front).
Note 2: Center switch position deactivates all contacts.
Note 3: Right switch position activates right side contacts (viewed from front).

Note: When using switches having two-deep contact blocks with the 22 mm plastic enclosures, be sure to use enclosures that are 74 mm deep; 51 mm-deep enclosures are too shallow and the switch body will not fit.



For accessories, see 22 mm Metal Pilot Device Accessories in this section.

GCX Series 22 mm Metal Illuminated Selector Switches

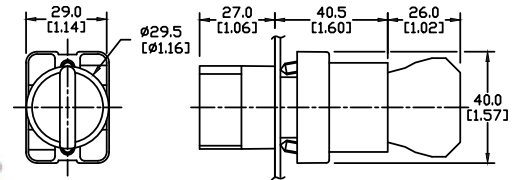
Illuminated two-position selector switches

20 models available:

- Available in five colors
- 24V and 120V models
- Available in spring-return and maintained styles
- Replacement knobs are available



Dimensions: mm [inches]



GCX1245-24

Note: For contact closure sequence, refer to preceding page.

Spring Return

Part Number	Lamp Color	Price	Description	Replacement Incandescent Bulb	Replacement LED Lamp
Incandescent					
GCX1241-24	Red	<--->	22 mm metal incandescent illuminated 2-position selector switch. Spring-return from right. 24VDC/VAC. One N.O. contact block. Illuminated colored knob.	ECX1902-5 5/pk 80mA	ECX1911-2 2/pk 26mA
GCX1241-120	Red	<--->	22 mm metal incandescent illuminated 2-position selector switch. Spring-return from right. 120VDC/VAC. One N.O. contact block. Illuminated colored knob.	ECX1904-5 5/pk 20mA	ECX1921-2 2/pk 5mA
GCX1242-24	Green	<--->	22 mm metal incandescent illuminated 2-position selector switch. Spring-return from right. 24VDC/VAC. One N.O. contact block. Illuminated colored knob.	ECX1902-5 5/pk 80mA	ECX1912-2 2/pk 26mA
GCX1242-120	Green	<--->	22 mm metal incandescent illuminated 2-position selector switch. Spring-return from right. 120VDC/VAC. One N.O. contact block. Illuminated colored knob.	ECX1904-5 5/pk 20mA	ECX1922-2 2/pk 5mA
GCX1243-24	Yellow	<--->	22 mm metal incandescent illuminated 2-position selector switch. Spring-return from right. 24VDC/VAC. One N.O. contact block. Illuminated colored knob.	ECX1902-5 5/pk 80mA	ECX1913-2 2/pk 26mA
GCX1243-120	Yellow	<--->	22 mm metal incandescent illuminated 2-position selector switch. Spring-return from right. 120VDC/VAC. One N.O. contact block. Illuminated colored knob.	ECX1904-5 5/pk 20mA	ECX1923-2 2/pk 5mA
GCX1244-24	Blue	<--->	22 mm metal incandescent illuminated 2-position selector switch. Spring-return from right. 24VDC/VAC. One N.O. contact block. Illuminated colored knob.	ECX1902-5 5/pk 80mA	ECX1914-2 2/pk 26mA
GCX1244-120	Blue	<--->	22 mm metal incandescent illuminated 2-position selector switch. Spring-return from right. 120VDC/VAC. One N.O. contact block. Illuminated colored knob.	ECX1904-5 5/pk 20mA	ECX1924-2 2/pk 5mA
GCX1245-24	Clear	<--->	22 mm metal incandescent illuminated 2-position selector switch. Spring-return from right. 24VDC/VAC. One N.O. contact block. Illuminated colored knob.	ECX1902-5 5/pk 80mA	ECX1915-2 2/pk 26mA
GCX1245-120	Clear	<--->	22 mm metal incandescent illuminated 2-position selector switch. Spring-return from right. 120VDC/VAC. One N.O. contact block. Illuminated colored knob.	ECX1904-5 5/pk 20mA	ECX1925-2 2/pk 5mA
LED					
GCX1241-24L	Red	<--->	22 mm metal LED illuminated 2-position selector switch. Spring-return from right. 24VDC/VAC. One N.O. contact block. Illuminated colored knob.	ECX1902-5 5/pk 80mA	ECX1911-2 2/pk 26mA
GCX1241-120L	Red	<--->	22 mm metal LED illuminated 2-position selector switch. Spring-return from right. 120VDC/VAC. One N.O. contact block. Illuminated colored knob.	ECX1904-5 5/pk 20mA	ECX1921-2 2/pk 5mA
GCX1242-24L	Green	<--->	22 mm metal LED illuminated 2-position selector switch. Spring-return from right. 24VDC/VAC. One N.O. contact block. Illuminated colored knob.	ECX1902-5 5/pk 80mA	ECX1912-2 2/pk 26mA
GCX1242-120L	Green	<--->	22 mm metal LED illuminated 2-position selector switch. Spring-return from right. 120VDC/VAC. One N.O. contact block. Illuminated colored knob.	ECX1904-5 5/pk 20mA	ECX1922-2 2/pk 5mA
GCX1243-24L	Yellow	<--->	22 mm metal LED illuminated 2-position selector switch. Spring-return from right. 24VDC/VAC. One N.O. contact block. Illuminated colored knob.	ECX1902-5 5/pk 80mA	ECX1913-2 2/pk 26mA
GCX1243-120L	Yellow	<--->	22 mm metal LED illuminated 2-position selector switch. Spring-return from right. 120VDC/VAC. One N.O. contact block. Illuminated colored knob.	ECX1904-5 5/pk 20mA	ECX1923-2 2/pk 5mA
GCX1244-24L	Blue	<--->	22 mm metal LED illuminated 2-position selector switch. Spring-return from right. 24VDC/VAC. One N.O. contact block. Illuminated colored knob.	ECX1902-5 5/pk 80mA	ECX1914-2 2/pk 26mA
GCX1244-120L	Blue	<--->	22 mm metal LED illuminated 2-position selector switch. Spring-return from right. 120VDC/VAC. One N.O. contact block. Illuminated colored knob.	ECX1904-5 5/pk 20mA	ECX1924-2 2/pk 5mA
GCX1245-24L	Clear	<--->	22 mm metal LED illuminated 2-position selector switch. Spring-return from right. 24VDC/VAC. One N.O. contact block. Illuminated colored knob.	ECX1902-5 5/pk 80mA	ECX1915-2 2/pk 26mA
GCX1245-120L	Clear	<--->	22 mm metal LED illuminated 2-position selector switch. Spring-return from right. 120VDC/VAC. One N.O. contact block. Illuminated colored knob.	ECX1904-5 5/pk 20mA	ECX1925-2 2/pk 5mA

For accessories, see 22 mm Metal Pilot Device Accessories in this section.

GCX Series 22 mm Metal Illuminated Selector Switches

Illuminated two-position maintained selector switches

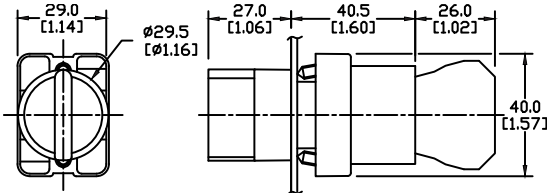
20 models available:

- Available in five colors
- 24V and 120V models
- Available in spring-return and maintained styles
- Replacement knobs are available



GCX1251-24

Dimensions: mm [inches]



Note: For contact closure sequence, refer to preceding pages.

Maintained

Part Number	Lamp Color	Price	Description	Replacement Incandescent Bulb	Replacement LED Lamp
Incandescent					
GCX1251-24	Red	<-->	22 mm metal incandescent illuminated 2-position selector switch. Maintained. 24VDC/VAC. One N.O. contact block. Illuminated colored knob.	ECX1902-5 5/pk 80mA	ECX1911-2 2/pk 26mA
GCX1251-120	Red	<-->	22 mm metal incandescent illuminated 2-position selector switch. Maintained. 120VDC/VAC. One N.O. contact block. Illuminated colored knob.	ECX1904-5 5/pk 20mA	ECX1921-2 2/pk 5mA
GCX1252-24	Green	<-->	22 mm metal incandescent illuminated 2-position selector switch. Maintained. 24VDC/VAC. One N.O. contact block. Illuminated colored knob.	ECX1902-5 5/pk 80mA	ECX1912-2 2/pk 26mA
GCX1252-120	Green	<-->	22 mm metal incandescent illuminated 2-position selector switch. Maintained. 120VDC/VAC. One N.O. contact block. Illuminated colored knob.	ECX1904-5 5/pk 20mA	ECX1922-2 2/pk 5mA
GCX1253-24	Yellow	<-->	22 mm metal incandescent illuminated 2-position selector switch. Maintained. 24VDC/VAC. One N.O. contact block. Illuminated colored knob.	ECX1902-5 5/pk 80mA	ECX1913-2 2/pk 26mA
GCX1253-120	Yellow	<-->	22 mm metal incandescent illuminated 2-position selector switch. Maintained. 120VDC/VAC. One N.O. contact block. Illuminated colored knob.	ECX1904-5 5/pk 20mA	ECX1923-2 2/pk 5mA
GCX1254-24	Blue	<-->	22 mm metal incandescent illuminated 2-position selector switch. Maintained. 24VDC/VAC. One N.O. contact block. Illuminated colored knob.	ECX1902-5 5/pk 80mA	ECX1914-2 2/pk 26mA
GCX1254-120	Blue	<-->	22 mm metal incandescent illuminated 2-position selector switch. Maintained. 120VDC/VAC. One N.O. contact block. Illuminated colored knob.	ECX1904-5 5/pk 20mA	ECX1924-2 2/pk 5mA
GCX1255-24	Clear	<-->	22 mm metal incandescent illuminated 2-position selector switch. Maintained. 24VDC/VAC. One N.O. contact block. Illuminated colored knob.	ECX1902-5 5/pk 80mA	ECX1915-2 2/pk 26mA
GCX1255-120	Clear	<-->	22 mm metal incandescent illuminated 2-position selector switch. Maintained. 120VDC/VAC. One N.O. contact block. Illuminated colored knob.	ECX1904-5 5/pk 20mA	ECX1925-2 2/pk 5mA
LED					
GCX1251-24L	Red	<-->	22 mm metal LED illuminated 2-position selector switch. Maintained. 24VDC/VAC. One N.O. contact block. Illuminated colored knob.	ECX1902-5 5/pk 80mA	ECX1911-2 2/pk 26mA
GCX1251-120L	Red	<-->	22 mm metal LED illuminated 2-position selector switch. Maintained. 120VDC/VAC. One N.O. contact block. Illuminated colored knob.	ECX1904-5 5/pk 20mA	ECX1921-2 2/pk 5mA
GCX1252-24L	Green	<-->	22 mm metal LED illuminated 2-position selector switch. Maintained. 24VDC/VAC. One N.O. contact block. Illuminated colored knob.	ECX1902-5 5/pk 80mA	ECX1912-2 2/pk 26mA
GCX1252-120L	Green	<-->	22 mm metal LED illuminated 2-position selector switch. Maintained. 120VDC/VAC. One N.O. contact block. Illuminated colored knob.	ECX1904-5 5/pk 20mA	ECX1922-2 2/pk 5mA
GCX1253-24L	Yellow	<-->	22 mm metal LED illuminated 2-position selector switch. Maintained. 24VDC/VAC. One N.O. contact block. Illuminated colored knob.	ECX1902-5 5/pk 80mA	ECX1913-2 2/pk 26mA
GCX1253-120L	Yellow	<-->	22 mm metal LED illuminated 2-position selector switch. Maintained. 120VDC/VAC. One N.O. contact block. Illuminated colored knob.	ECX1904-5 5/pk 20mA	ECX1923-2 2/pk 5mA
GCX1254-24L	Blue	<-->	22 mm metal LED illuminated 2-position selector switch. Maintained. 24VDC/VAC. One N.O. contact block. Illuminated colored knob.	ECX1902-5 5/pk 80mA	ECX1914-2 2/pk 26mA
GCX1254-120L	Blue	<-->	22 mm metal LED illuminated 2-position selector switch. Maintained. 120VDC/VAC. One N.O. contact block. Illuminated colored knob.	ECX1904-5 5/pk 20mA	ECX1924-2 2/pk 5mA
GCX1255-24L	Clear	<-->	22 mm metal LED illuminated 2-position selector switch. Maintained. 24VDC/VAC. One N.O. contact block. Illuminated colored knob.	ECX1902-5 5/pk 80mA	ECX1915-2 2/pk 26mA
GCX1255-120L	Clear	<-->	22 mm metal LED illuminated 2-position selector switch. Maintained. 120VDC/VAC. One N.O. contact block. Illuminated colored knob.	ECX1904-5 5/pk 20mA	ECX1925-2 2/pk 5mA

For accessories, see 22 mm Metal Pilot Device Accessories in this section.

GCX Series 22 mm Metal Illuminated Selector Switches

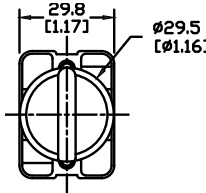
Illuminated three-position maintained selector switch

20 models available:

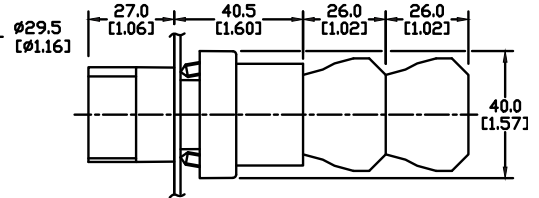
- Available in five colors
- 24V and 120V models
- Available in spring-return and maintained styles
- Replacement knobs are available



GCX1263-24



Dimensions: mm [inches]



Note: For contact closure sequence, refer to preceding pages.

Maintained

Part Number	Lamp Color	Price	Description	Replacement Incandescent Bulb	Replacement LED Lamp
Incandescent					
GCX1261-24	Red	<--->	22 mm metal incandescent illuminated 3-position selector switch. Maintained. 24VDC/VAC. Two N.O. and Two N.C. contact blocks.	ECX1902-5 5/pk 80mA	ECX1911-2 2/pk 26mA
GCX1261-120	Red	<--->	22 mm metal incandescent illuminated 3-position selector switch. Maintained. 120VDC/VAC. Two N.O. and Two N.C. contact blocks.	ECX1904-5 5/pk 20mA	ECX1921-2 2/pk 5mA
GCX1262-24	Green	<--->	22 mm metal incandescent illuminated 3-position selector switch. Maintained. 24VDC/VAC. Two N.O. and Two N.C. contact blocks.	ECX1902-5 5/pk 80mA	ECX1912-2 2/pk 26mA
GCX1262-120	Green	<--->	22 mm metal incandescent illuminated 3-position selector switch. Maintained. 120VDC/VAC. Two N.O. and Two N.C. contact blocks.	ECX1904-5 5/pk 20mA	ECX1922-2 2/pk 5mA
GCX1263-24	Yellow	<--->	22 mm metal incandescent illuminated 3-position selector switch. Maintained. 24VDC/VAC. Two N.O. and Two N.C. contact blocks.	ECX1902-5 5/pk 80mA	ECX1913-2 2/pk 26mA
GCX1263-120	Yellow	<--->	22 mm metal incandescent illuminated 3-position selector switch. Maintained. 120VDC/VAC. Two N.O. and Two N.C. contact blocks.	ECX1904-5 5/pk 20mA	ECX1923-2 2/pk 5mA
GCX1264-24	Blue	<--->	22 mm metal incandescent illuminated 3-position selector switch. Maintained. 24VDC/VAC. Two N.O. and Two N.C. contact blocks.	ECX1902-5 5/pk 80mA	ECX1914-2 2/pk 26mA
GCX1264-120	Blue	<--->	22 mm metal incandescent illuminated 3-position selector switch. Maintained. 120VDC/VAC. Two N.O. and Two N.C. contact blocks.	ECX1904-5 5/pk 20mA	ECX1924-2 2/pk 5mA
GCX1265-24	Clear	<--->	22 mm metal incandescent illuminated 3-position selector switch. Maintained. 24VDC/VAC. Two N.O. and Two N.C. contact blocks.	ECX1902-5 5/pk 80mA	ECX1915-2 2/pk 26mA
GCX1265-120	Clear	<--->	22 mm metal incandescent illuminated 3-position selector switch. Maintained. 120VDC/VAC. Two N.O. and Two N.C. contact blocks.	ECX1904-5 5/pk 20mA	ECX1925-2 2/pk 5mA
LED					
GCX1261-24L	Red	<--->	22 mm metal LED illuminated 3-position selector switch. Maintained. 24VDC/VAC. Two N.O. and Two N.C. contact blocks.	ECX1902-5 5/pk 80mA	ECX1911-2 2/pk 26mA
GCX1261-120L	Red	<--->	22 mm metal LED illuminated 3-position selector switch. Maintained. 120VDC/VAC. Two N.O. and Two N.C. contact blocks.	ECX1904-5 5/pk 20mA	ECX1921-2 2/pk 5mA
GCX1262-24L	Green	<--->	22 mm metal LED illuminated 3-position selector switch. Maintained. 24VDC/VAC. Two N.O. and Two N.C. contact blocks.	ECX1902-5 5/pk 80mA	ECX1912-2 2/pk 26mA
GCX1262-120L	Green	<--->	22 mm metal LED illuminated 3-position selector switch. Maintained. 120VDC/VAC. Two N.O. and Two N.C. contact blocks.	ECX1904-5 5/pk 20mA	ECX1922-2 2/pk 5mA
GCX1263-24L	Yellow	<--->	22 mm metal LED illuminated 3-position selector switch. Maintained. 24VDC/VAC. Two N.O. and Two N.C. contact blocks.	ECX1902-5 5/pk 80mA	ECX1913-2 2/pk 26mA
GCX1263-120L	Yellow	<--->	22 mm metal LED illuminated 3-position selector switch. Maintained. 120VDC/VAC. Two N.O. and Two N.C. contact blocks.	ECX1904-5 5/pk 20mA	ECX1923-2 2/pk 5mA
GCX1264-24L	Blue	<--->	22 mm metal LED illuminated 3-position selector switch. Maintained. 24VDC/VAC. Two N.O. and Two N.C. contact blocks.	ECX1902-5 5/pk 80mA	ECX1914-2 2/pk 26mA
GCX1264-120L	Blue	<--->	22 mm metal LED illuminated 3-position selector switch. Maintained. 120VDC/VAC. Two N.O. and Two N.C. contact blocks.	ECX1904-5 5/pk 20mA	ECX1924-2 2/pk 5mA
GCX1265-24L	Clear	<--->	22 mm metal LED illuminated 3-position selector switch. Maintained. 24VDC/VAC. Two N.O. and Two N.C. contact blocks.	ECX1902-5 5/pk 80mA	ECX1915-2 2/pk 26mA
GCX1265-120L	Clear	<--->	22 mm metal LED illuminated 3-position selector switch. Maintained. 120VDC/VAC. Two N.O. and Two N.C. contact blocks.	ECX1904-5 5/pk 20mA	ECX1925-2 2/pk 5mA

For accessories, see 22 mm Metal Pilot Device Accessories in this section.

GCX Series 22 mm Metal Illuminated Selector Switches

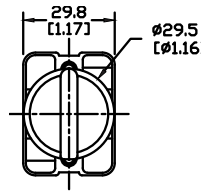
Illuminated three-position spring return selector switches

20 models available:

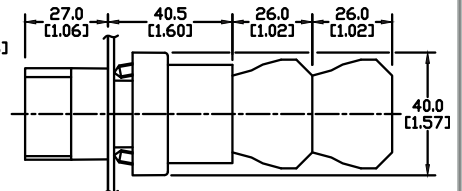
- Available in five colors
- 24V and 120V models
- Available in spring-return and maintained styles
- Replacement knobs are available



GCX1283-24



Dimensions: mm [inches]



For contact closure sequence, refer to preceding pages.

Spring Return

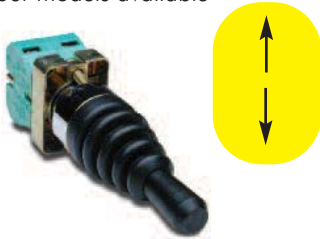
Part Number	Lamp Color	Price	Description	Standard Incandescent Bulb	Standard LED Lamp
Incandescent					
GCX1281-24	Red	<-->	22 mm metal incandescent illuminated 3-position selector switch. Spring-return to Center. 24VDC/VAC. Two N.O. and Two N.C. contact blocks.	ECX1902-5 5/pk 80mA	ECX1911-2 2/pk 26mA
GCX1281-120	Red	<-->	22 mm metal incandescent illuminated 3-position selector switch. Spring-return to Center. 120VDC/VAC. Two N.O. and Two N.C. contact blocks.	ECX1904-5 5/pk 20mA	ECX1921-2 2/pk 5mA
GCX1282-24	Green	<-->	22 mm metal incandescent illuminated 3-position selector switch. Spring-return to Center. 24VDC/VAC. Two N.O. and Two N.C. contact blocks.	ECX1902-5 5/pk 80mA	ECX1912-2 2/pk 26mA
GCX1282-120	Green	<-->	22 mm metal incandescent illuminated 3-position selector switch. Spring-return to Center. 120VDC/VAC. Two N.O. and Two N.C. contact blocks.	ECX1904-5 5/pk 20mA	ECX1922-2 2/pk 5mA
GCX1283-24	Yellow	<-->	22 mm metal incandescent illuminated 3-position selector switch. Spring-return to Center. 24VDC/VAC. Two N.O. and Two N.C. contact blocks.	ECX1902-5 5/pk 80mA	ECX1913-2 2/pk 26mA
GCX1283-120	Yellow	<-->	22 mm metal incandescent illuminated 3-position selector switch. Spring-return to Center. 120VDC/VAC. Two N.O. and Two N.C. contact blocks.	ECX1904-5 5/pk 20mA	ECX1923-2 2/pk 5mA
GCX1284-24	Blue	<-->	22 mm metal incandescent illuminated 3-position selector switch. Spring-return to Center. 24VDC/VAC. Two N.O. and Two N.C. contact blocks.	ECX1902-5 5/pk 80mA	ECX1914-2 2/pk 26mA
GCX1284-120	Blue	<-->	22 mm metal incandescent illuminated 3-position selector switch. Spring-return to Center. 120VDC/VAC. Two N.O. and Two N.C. contact blocks.	ECX1904-5 5/pk 20mA	ECX1924-2 2/pk 5mA
GCX1285-24	Clear	<-->	22 mm metal incandescent illuminated 3-position selector switch. Spring-return to Center. 24VDC/VAC. Two N.O. and Two N.C. contact blocks.	ECX1902-5 5/pk 80mA	ECX1915-2 2/pk 26mA
GCX1285-120	Clear	<-->	22 mm metal incandescent illuminated 3-position selector switch. Spring-return to Center. 120VDC/VAC. Two N.O. and Two N.C. contact blocks.	ECX1904-5 5/pk 20mA	ECX1925-2 2/pk 5mA
LED					
GCX1281-24L	Red	<-->	22 mm metal LED illuminated 3-position selector switch. Spring-return to Center. 24VDC/VAC. Two N.O. and Two N.C. contact blocks.	ECX1902-5 5/pk 80mA	ECX1911-2 2/pk 26mA
GCX1281-120L	Red	<-->	22 mm metal LED illuminated 3-position selector switch. Spring-return to Center. 120VDC/VAC. Two N.O. and Two N.C. contact blocks.	ECX1904-5 5/pk 20mA	ECX1921-2 2/pk 5mA
GCX1282-24L	Green	<-->	22 mm metal LED illuminated 3-position selector switch. Spring-return to Center. 24VDC/VAC. Two N.O. and Two N.C. contact blocks.	ECX1902-5 5/pk 80mA	ECX1912-2 2/pk 26mA
GCX1282-120L	Green	<-->	22 mm metal LED illuminated 3-position selector switch. Spring-return to Center. 120VDC/VAC. Two N.O. and Two N.C. contact blocks.	ECX1904-5 5/pk 20mA	ECX1922-2 2/pk 5mA
GCX1283-24L	Yellow	<-->	22 mm metal LED illuminated 3-position selector switch. Spring-return to Center. 24VDC/VAC. Two N.O. and Two N.C. contact blocks.	ECX1902-5 5/pk 80mA	ECX1913-2 2/pk 26mA
GCX1283-120L	Yellow	<-->	22 mm metal LED illuminated 3-position selector switch. Spring-return to Center. 120VDC/VAC. Two N.O. and Two N.C. contact blocks.	ECX1904-5 5/pk 20mA	ECX1923-2 2/pk 5mA
GCX1284-24L	Blue	<-->	22 mm metal LED illuminated 3-position selector switch. Spring-return to Center. 24VDC/VAC. Two N.O. and Two N.C. contact blocks.	ECX1902-5 5/pk 80mA	ECX1914-2 2/pk 26mA
GCX1284-120L	Blue	<-->	22 mm metal LED illuminated 3-position selector switch. Spring-return to Center. 120VDC/VAC. Two N.O. and Two N.C. contact blocks.	ECX1904-5 5/pk 20mA	ECX1924-2 2/pk 5mA
GCX1285-24L	Clear	<-->	22 mm metal LED illuminated 3-position selector switch. Spring-return to Center. 24VDC/VAC. Two N.O. and Two N.C. contact blocks.	ECX1902-5 5/pk 80mA	ECX1915-2 2/pk 26mA
GCX1285-120L	Clear	<-->	22 mm metal LED illuminated 3-position selector switch. Spring-return to Center. 120VDC/VAC. Two N.O. and Two N.C. contact blocks.	ECX1904-5 5/pk 20mA	ECX1925-2 2/pk 5mA

For accessories, see 22 mm Metal Pilot Device Accessories in this section.

ECX Series 22 mm Metal Joystick Selector Switches

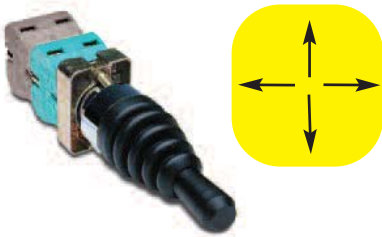
Joystick selector switches

Four models available



ECX1510 (Two-position momentary) ECX1512 (Two-position maintained)

- Moving the joystick **UP** will close contact on one side.
- Moving the joystick **DOWN** will close contact on other side.



ECX1520 (Four-position momentary) ECX1524 (Four-position maintained)

- Moving the joystick **UP** will close Green contact on one side and moving it **DOWN** will close Gray contact located behind it.
- Moving the joystick **RIGHT** will close Green contact on other side and moving it **LEFT** will close Gray contact located behind it.

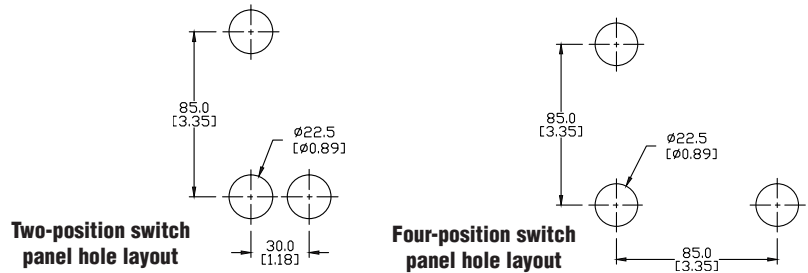
Part Number	Price	Description
ECX1510	<--->	22 mm metal joystick-style selector switch, two-position momentary, two N.O. contact blocks
ECX1512	<--->	22 mm metal joystick-style selector switch, two-position maintained, two N.O. contact blocks
ECX1520	<--->	22 mm metal joystick-style selector switch, four-position momentary, four N.O. contact blocks
ECX1524	<--->	22 mm metal joystick-style selector switch, four-position maintained, four N.O. contact blocks

Note: Four-position switches use two special contact blocks which are not replaceable.

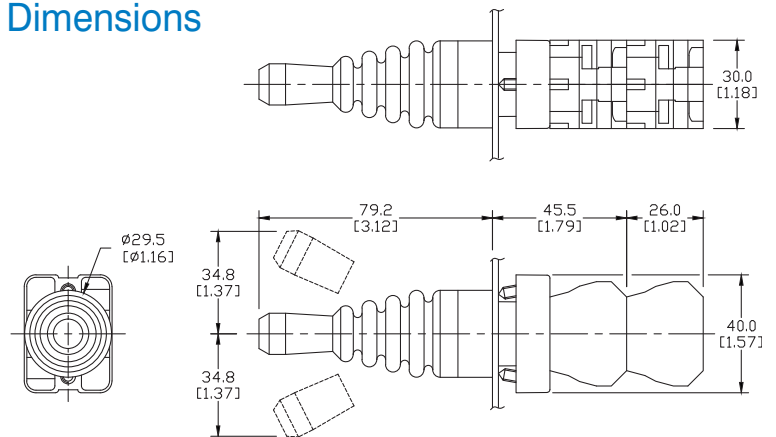
Note: When using switches having two-deep contact blocks (4-position joysticks) with the 22 mm plastic enclosures, use enclosures that are 74 mm deep; 51 mm-deep enclosures are too shallow.

Mounting

Dimensions: mm [inches]

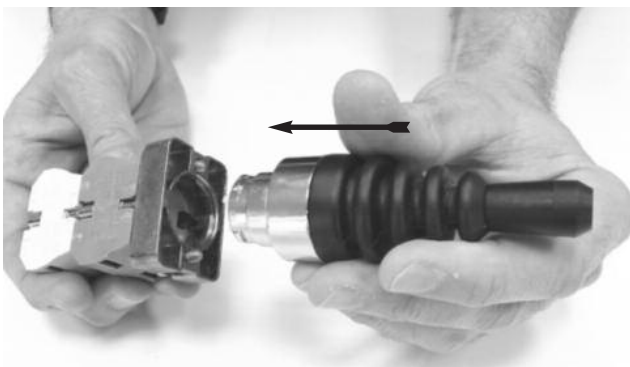


Dimensions



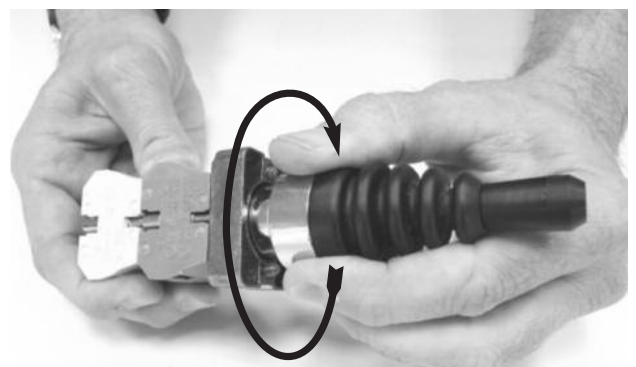
Important installation note

It is very important that the joystick be assembled correctly to ensure proper operation.



Insert operator into support base (panel is not shown).

For accessories, see 22 mm Metal Pilot Device Accessories in this section.

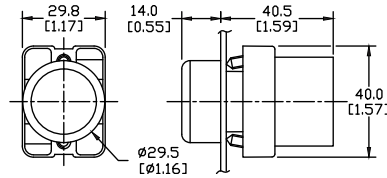


Twist clockwise until it clicks into place. Carefully tighten the securing screws. Do not over-tighten. If the operator is not "clicked" into position before the screws are tightened, the switch will not work properly.

GCX Series 22 mm Metal Pilot Lights and Key Switches



Dimensions: mm [inches]



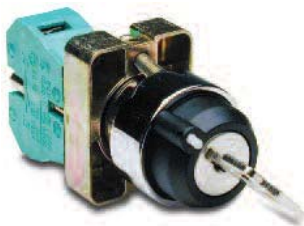
LED Pilot Light

12 models available

- Available in six colors
- 24V and 120V models
- LED lamps are included
- Accepts incandescent replacement bulbs

Part Number	Lamp Color	Price	Description	Replacement Incandescent Bulb	Replacement LED Lamp
LED					
GCX1231-24L	Red	<--->	22 mm metal LED illuminated pilot light. 24VDC/VAC	ECX1902-5 5/pk, 80mA	ECX1911-2 2/pk, 26mA
GCX1231-120L	Red	<--->	22 mm metal LED illuminated pilot light. 120VDC/VAC	ECX1904-5 5/pk, 20mA	ECX1921-2 2/pk, 5mA
GCX1232-24L	Green	<--->	22 mm metal LED illuminated pilot light. 24VDC/VAC	ECX1902-5 5/pk, 80mA	ECX1912-2 2/pk, 26mA
GCX1232-120L	Green	<--->	22 mm metal LED illuminated pilot light. 120VDC/VAC	ECX1904-5 5/pk, 20mA	ECX1922-2 2/pk, 5mA
GCX1233-24L	Yellow	<--->	22 mm metal LED illuminated pilot light. 24VDC/VAC	ECX1902-5 5/pk, 80mA	ECX1913-2 2/pk, 26mA
GCX1233-120L	Yellow	<--->	22 mm metal LED illuminated pilot light. 120VDC/VAC	ECX1904-5 5/pk, 20mA	ECX1923-2 2/pk, 5mA
GCX1234-24L	Blue	<--->	22 mm metal LED illuminated pilot light. 24VDC/VAC	ECX1902-5 5/pk, 80mA	ECX1914-2 2/pk, 26mA
GCX1234-120L	Blue	<--->	22 mm metal LED illuminated pilot light. 120VDC/VAC	ECX1904-5 5/pk, 20mA	ECX1924-2 2/pk, 5mA
GCX1235-24L	Clear	<--->	22 mm metal LED illuminated pilot light. 24VDC/VAC	ECX1902-5 5/pk, 80mA	ECX1915-2 2/pk, 26mA
GCX1235-120L	Clear	<--->	22 mm metal LED illuminated pilot light. 120VDC/VAC	ECX1904-5 5/pk, 20mA	ECX1925-2 2/pk, 5mA
GCX1236-24L	White	<--->	22 mm metal LED illuminated pilot light. 24VDC/VAC	ECX1902-5 5/pk, 80mA	ECX1915-2 2/pk, 26mA
GCX1236-120L	White	<--->	22 mm metal LED illuminated pilot light. 120VDC/VAC	ECX1904-5 5/pk, 20mA	ECX1925-2 2/pk, 5mA

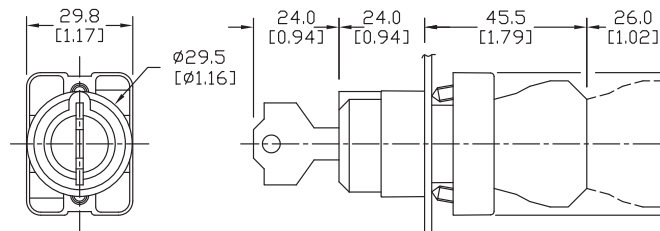
Key-operated selector switches


GCX1420

(2-position maintained)

Part Number	Price	Description
GCX1420	<--->	22 mm metal selector switch, key-operated, two-position maintained , key can be removed in all positions. One N.O. contact block. Replacement keys available
GCX1430	<--->	22 mm metal selector switch, key-operated, two-position spring-return from right . One N.O. contact block. Replacement keys available
GCX1470-22	<--->	22 mm metal selector switch, key-operated, three-position maintained , key can be removed in all positions. Two N.O. and two N.C. contact blocks. Replacement keys available

Dimensions: mm [inches]



Note: Keyed switches come with two keys. All metal 22 mm keyed switches are keyed the same. Replacement keys are available. Order part no. ECX1067-2 (pkg. of 2). Keys for metal 22 mm keyed switches are not compatible with Cutler-Hammer key switches.



Note: When using switches having two-deep contact blocks (such as, Model GCX1470-22) with the 22 mm plastic enclosures, be sure to use enclosures that are 74 mm deep. 51 mm-deep enclosures are too shallow and the switch body will not fit.

Note: For contact closure sequence, refer to beginning of selector switches in this section.

For accessories, see 22 mm Metal Pilot Device Accessories in this section.

ECX Series 22 mm Metal Pilot Devices

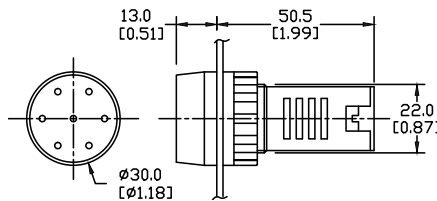
Audible annunciator



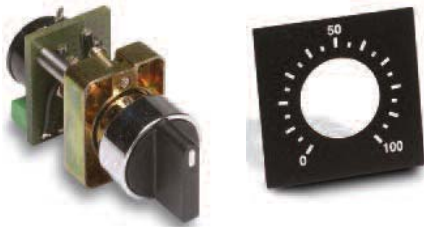
- 80 dB @ 10 cm
- 25 mA @ 24V
- Intermittent sound when energized
- IP20 before installation
- IP64 after installation

Part Number	Color	Price	Description
ECX2070-24	Black	<--->	22 mm, 25 mA audible (80dB at 10 cm) buzzer annunciator. 24VAC/DC
ECX2070-127	Black	<--->	22 mm, 25 mA audible (80dB at 10 cm) buzzer annunciator. 120VAC/DC
ECX2071-24R	Red	<--->	22 mm, 25 mA audible (80dB at 10 cm) buzzer annunciator with non-replaceable LED indicator. 24VAC/DC
ECX2071-127R	Red	<--->	22 mm, 25 mA audible (80dB at 10 cm) buzzer annunciator with non-replaceable LED indicator.120VAC/DC

Dimensions: mm [inches]



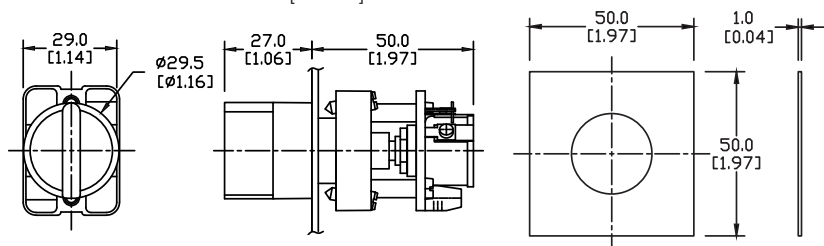
22 mm potentiometer



- IP65

Part Number	Quantity	Price	Description
ECX2300-5K	pkg. of 1	<--->	22 mm potentiometer with 5k Ω resistance, $\pm 10\%$. Nominal voltage: 250V. Rated dissipation: 2W at 25°C. Temperature range -40°C to 70°C. Black handle
ECX2300-10K	pkg. of 1	<--->	22 mm potentiometer with 10k Ω resistance, $\pm 10\%$. Nominal voltage: 250V. Rated dissipation: 2W at 25°C. Temperature range -40°C to 70°C. Black handle
ECX2640	pkg. of 1	<--->	22 mm legend plate for potentiometer with 0% to 100% marking, 50 mm square. 50 x 50 x 1mm with 24.5mm cutout.

Dimensions: mm [inches]



For accessories, see 22 mm Metal Pilot Device Accessories in this section.

22 mm Metal Pilot Device Accessories

Replacement incandescent bulbs



ECX1902-5

Replacement Incandescent Bulbs				
Part Number	Quantity	Price	Rating	Description
ECX1900-5	Pkg of 5 bulbs	<--->	6V@ 200mA , 1.2 watts	6V replacement bulb for 22 mm switches and indicators. Miniature bayonet base T31/4
ECX1902-5	Pkg of 5 bulbs	<--->	24V@ 80mA 2 watts	24V replacement bulb for 22 mm switches and indicators. Miniature bayonet base T31/4
ECX1904-5	Pkg of 5 bulbs	<--->	130V@20mA 2.6 watts	120V replacement bulb for 22 mm switches and indicators. Miniature bayonet base T31/4

Note: Bulb removal tool available. Order part number HT8LAMPTOOL.

Replacement LED lamps



ECX1915-2

Replacement LED Lamps					
Part Number	Color	Quantity	Price	Rating	Description
ECX1911-2	Red	Pkg of 2 LED lamps	<--->	24V@26mA 0.6 watts	LED replacement lamp for miniature bayonet bases Works with 22 mm switches and indicators, but illumination will not be as even when used with the ECX 22 mm indicators Note: Will not replace sealed Cutler-Hammer monoblock LED indicators.
ECX1912-2	Green		<--->		
ECX1913-2	Yellow		<--->		
ECX1914-2	Blue		<--->		
ECX1915-2	White		<--->		
ECX1921-2	Red		<--->	120V@5mA 0.6 watts	
ECX1922-2	Green		<--->		
ECX1923-2	Yellow		<--->		
ECX1924-2	Blue		<--->		
ECX1925-2	White		<--->		

Hole plug



ECX1490

Hole Plug			
Part Number	Color	Price	Description
ECX1490	Black	<--->	Plastic hole plug for 22.5 mm openings in panels and enclosures; supplied with O-ring and mounting screw. Two plugs per package.

Pilot Light replacement lens



PL1170PR-5

Pilot Light Replacement Lens				
Part Number	Lamp Color	Price	Description	Use with
PL1170PR-5	Red	<--->	22 mm metallic series pilot light replacement lens, 5/pk	Part numbers starting with GCX123
PL1170PV-5	Green	<--->	22 mm metallic series pilot light replacement lens, 5/pk	
PL1170PG-5	Yellow	<--->	22 mm metallic series pilot light replacement lens, 5/pk	
PL1170PB-5	Blue	<--->	22 mm metallic series pilot light replacement lens, 5/pk	
PL1170PN-5	Clear	<--->	22 mm metallic series pilot light replacement lens, 5/pk	
PL1170PW-5	White	<--->	22 mm metallic series pilot light replacement lens, 5/pk	

22 mm Metal Pilot Device Accessories

Protective covers for pushbuttons



ECX1703-5

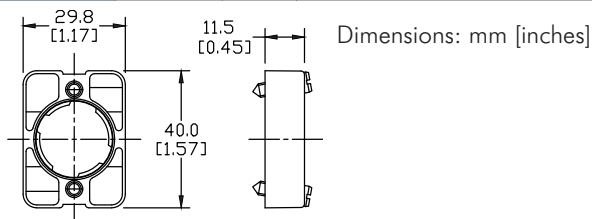
Protective Covers for Pushbuttons				
Part Number	Color	Quantity	Price	Description
ECX1700-5	Black	Pkg of 5 Protective caps	<--->	Silicone protective covers for use with 22 mm standard-size flush pushbuttons. Will not work with Cutler-Hammer pushbuttons, 22 mm plastic illuminated or extended pushbuttons, or 22 mm plastic pushbuttons with 40 mm actuator face.
ECX1701-5	Red		<--->	
ECX1702-5	Green		<--->	
ECX1703-5	Yellow		<--->	
ECX1704-5	Blue		<--->	
ECX1705-5	Clear		<--->	
ECX1706-5	Clear	<--->	Clear silicone protective covers for use with 22 mm illuminated and extended pushbuttons only . Will not work with Cutler-Hammer pushbuttons or 22 mm mushroom pushbuttons.	

Replacement 22 mm support base



ECX1029-2

Replacement 22 mm Support Base			
Part Number	Quantity	Price	Description
ECX1029-2	Pkg of 1	<--->	22 mm metal support base Note: This item is supplied as a replacement part and is not required with any switch assembly. Will not work with Cutler-Hammer 22 mm switches sold by AUTOMATIONDIRECT



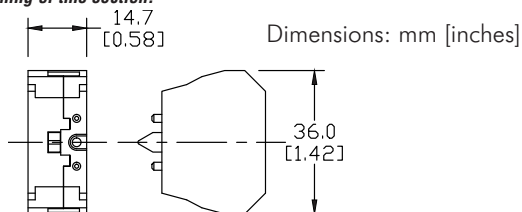
Replacement contact blocks



ECX1030-2

Replacement Contact Blocks				
Part Number	Quantity	Price	Contacts	Description
ECX1030-2	Pkg of 2	<--->	Red, normally-closed (N.C.)	Replacement contact block for 22 mm pushbuttons and selector switches. Tightening Torque, terminal screw: 0.8Nm max mounting screw: 0.5Nm max
ECX1030-5	Pkg of 5	<--->		
ECX1040-2	Pkg of 2	<--->	Green, normally-open (N.O.)	Note: Will not work with Cutler-Hammer 22 mm switches.
ECX1040-5	Pkg of 5	<--->		
ECX1042-2	Pkg of 2	<--->	Brown, normally-open (N.O.), push-push	Replacement normally open push-push contact blocks for 22mm pushbutton and selector switches, pack of 2. Note: Will not work with Cutler-Hammer 22mm switches.

Note: See electrical specifications on ECX Series 22 mm Metal Pilot Devices Specifications page at beginning of this section.



Replacement keys



ECX1067-2

Replacement Keys			
Part Number	Quantity	Price	Description
ECX1067-2	Pkg of 2 sets (2 keys per set)	<--->	Replacement key for GCX series key-actuated selector switches, pack of 2 sets (2 keys each). NOTE: Will not work with Cutler-Hammer 22mm switches.

Note: All key-actuated 22mm metal selector switches are keyed alike.

22 mm Metal Pilot Device Accessories

EMERGENCY STOP legend plate



ECX1651

EMERGENCY STOP Legend Plate			
Part Number	Quantity	Price	Description
ECX1651	Pkg of 1	<--->	Oversize yellow circular EMERGENCY STOP legend plate for 22 mm E-stop type mushroom pushbuttons, 60 mm outside diameter.

Knockout Punches



109225

Ruko's knockout punch hole-cutting tool includes punch, die and draw bolt (without ball bearing). Use for sheet steel, stainless-steel sheets, non-ferrous and light metals, and plastics up to 0.16" (8 ga.) thick.

Replacement bolts are offered in three of the most popular sizes.

Note: Part number 109225 is recommended when punching holes for 22mm pilot devices.

Two-position short lever operator



GR1172PR-5

Short Lever Replacement Operator				
Part Number	Lamp Color	Price	2-Position	Use with
GR1172PR-5	Red	<--->	22 mm 2-position selector switch illuminated short lever replacement operator, 5/pk	Part numbers starting with GCX124, GCX125 GCX324, GCX325
GR1172PV-5	Green	<--->	22 mm 2-position selector switch illuminated short lever replacement operator, 5/pk	
GR1172PG-5	Yellow	<--->	22 mm 2-position selector switch illuminated short lever replacement operator, 5/pk	
GR1172PB-5	Blue	<--->	22 mm 2-position selector switch illuminated short lever replacement operator, 5/pk	
GR1172PN-5	Clear	<--->	22 mm 2-position selector switch illuminated short lever replacement operator, 5/pk	

Three-position short lever operator



GR1288PR-5

Short Lever Replacement Operator				
Part Number	Lamp Color	Price	3-Position	Use with
GR1288PR-5	Red	<--->	22 mm 3-position selector switch illuminated short lever replacement operator, 5/pk	Part numbers starting with GCX126, GCX128 GCX326, GCX328
GR1288PV-5	Green	<--->	22 mm 3-position selector switch illuminated short lever replacement operator, 5/pk	
GR1288PG-5	Yellow	<--->	22 mm 3-position selector switch illuminated short lever replacement operator, 5/pk	
GR1288PB-5	Blue	<--->	22 mm 3-position selector switch illuminated short lever replacement operator, 5/pk	
GR1288PN-5	Clear	<--->	22 mm 3-position selector switch illuminated short lever replacement operator, 5/pk	

22 mm Metal Pilot Device Accessories

Mushroom switch replacement operator



PL1298P-5

Mushroom Switch Replacement Operator				
Part Number	Lamp Color	Price	Description	Use with
PL1171PR-5	Red	<--->	22 mm, illuminated momentary Mushroom switch replacement operator, red, 5/pk	Part numbers starting with GCX1221, GCX3221 mushroom-style illuminated pushbuttons
PL1298P-5	Red	<--->	22 mm illuminated twist-to-release mushroom switch replacement operator, red, 5/pk	Part numbers starting with GCX1226, GCX3226 mushroom-style illuminated pushbuttons

Flush pushbutton replacement operator



GR1168PR-5

Flush Pushbutton Replacement Operator				
Part Number	Lamp Color	Price	Description	Use with
GR1168PR-5	Red	<--->	22 mm illuminated flush pushbutton replacement operator, 5/pk	Part numbers starting with GCX119, GCX120 GCX319, GCX320
GR1168PV-5	Green	<--->	22 mm illuminated flush pushbutton replacement operator, 5/pk	
GR1168PG-5	Yellow	<--->	22 mm illuminated flush pushbutton replacement operator, 5/pk	
GR1168PB-5	Blue	<--->	22 mm illuminated flush pushbutton replacement operator, 5/pk	
GR1168PN-5	Clear	<--->	22 mm illuminated flush pushbutton replacement operator, 5/pk	
GR1168PW-5	White	<--->	22 mm illuminated flush pushbutton replacement operator, 5/pk	

Extended pushbutton replacement operator



PL1308PR-5

Extended Pushbutton Replacement Operator				
Part Number	Lamp Color	Price	Description	Use with
PL1308PR-5	Red	<--->	22 mm illuminated extended pushbutton, replacement operator, 5/pk	Part numbers starting with GCX121, GCX321
PL1308PV-5	Green	<--->	22 mm illuminated extended pushbutton, replacement operator, 5/pk	
PL1308PG-5	Yellow	<--->	22 mm illuminated extended pushbutton, replacement operator, 5/pk	
PL1308PB-5	Blue	<--->	22 mm illuminated extended pushbutton, replacement operator, 5/pk	
PL1308PN-5	Clear	<--->	22 mm illuminated extended pushbutton, replacement operator, 5/pk	
PL1308PW-5	White	<--->	22 mm illuminated extended pushbutton, replacement operator, 5/pk	