

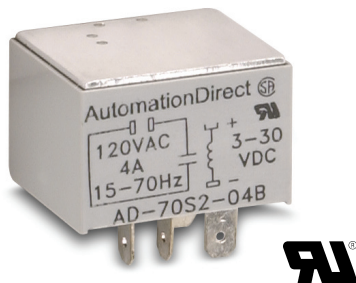
AD Series Solid State Relays



AD-SSR210-22-DCZ

Overview

A solid state relay is a relay with an isolated input and output, whose functions are achieved by using electronic components without the use of moving parts (vs. electromechanical relays).



AD-70S2-04B

Operation

Solid state relays (SSR) are similar to electromechanical relays, in that both use a control circuit and a separate circuit for switching the load. When voltage is applied to the input of the SSR, the relay is energized by a light-emitting diode. The light from the diode is beamed into a light sensitive semiconductor which, in the case of zero voltage crossover relays, signals the control circuit to turn on the output of the solid state switch at the next zero voltage crossover.

Features

Solid state relays have features which electromechanical relays do not, such as:

- Long life
- Shock and vibration resistant
- No generation of RFI, EMI
- No contact bounce
- Arcless switching
- No acoustic noise
- Zero crossing or random switching types
- IC compatibility
- Immunity to humidity, salt spray and dirt
- UL # E222847
- CSA # 2742910

AD-SSR

- AC & DC input
- AC output
- 10 or 25 amp loads
- Photo isolated zero voltage switching
- 4000 Vrms isolation input to output
- Internal RC (snubber) network
- RFI suppression
- Integral safety cover and heatsink
- DIN-rail mounting or panel-mount

AD-70S2

- DC input
- AC output
- Up to 4 amp loads
- Optically isolated
- Quick connect terminal, or panel mount when inserted into DIN-rail mountable socket

AD Series Solid State Relay Selection Guide

Solid State Relays						
Part Number	Price	Drawing Links	Description	Switching Type	Derating Charts	
AD-SSR210-22-ACZ	\$46.00	PDF	Solid state DIN-rail mount relay with 10A contact rating. Coil voltage 90-280 VAC. Load voltage is 24-280 VAC. Finger-safe design and LED status lamp. SPST normally open.	Zero Cross	Figure 1	
AD-SSR210-22-DCZ	\$46.00	PDF	Solid state DIN-rail mount relay with 10A contact rating. Coil voltage 4-32 VDC. Load voltage is 24-280 VAC. Finger-safe design and LED status lamp. SPST normally open.			
AD-SSR230-22-ACZ	\$69.00	PDF	Solid state DIN-rail mount relay with 30A contact rating. Coil voltage 90-280 VAC. Load voltage is 24-280 VAC. Finger-safe design and LED status lamp. SPST normally open.			
AD-SSR230-22-DCZ	\$69.00	PDF	Solid state DIN-rail mount relay with 30A contact rating. Coil voltage 4-32 VDC. Load voltage is 24-280 VAC. Finger-safe design and LED status lamp. SPST normally open.			
AD-SSR610-22-ACZ	\$49.00	PDF	Solid state DIN-rail mount relay with 10A contact rating. Coil voltage 90-280 VAC. Load voltage is 48-660 VAC. Finger-safe design and LED status lamp. SPST normally open.			
AD-SSR610-22-DCZ	\$44.00	PDF	Solid state DIN-rail mount relay with 10A contact rating. Coil voltage 4-32 VDC. Load voltage is 48-660 VAC. Finger-safe design and LED status lamp. SPST normally open.			
AD-SSR630-22-ACZ	\$69.00	PDF	Solid state DIN-rail mount relay with 30A contact rating. Coil voltage 90-280 VAC. Load voltage is 48-660 VAC. Finger-safe design and LED status lamp. SPST normally open.			
AD-SSR630-22-DCZ	\$62.00	PDF	Solid state DIN-rail mount relay with 30A contact rating. Coil voltage 4-32 VDC. Load voltage is 48-660 VAC. Finger-safe design and LED status lamp. SPST normally open.			
AD-SSR210-22-ACR	\$46.00	PDF	Solid state DIN-rail mount relay with 10A contact rating. Coil voltage 90-280 VAC. Load voltage is 24-280 VAC. Finger-safe design and LED status lamp. SPST normally open.	Random Switching		Figure 1
AD-SSR210-22-DCR	\$46.00	PDF	Solid state DIN-rail mount relay with 10A contact rating. Coil voltage 4-32 VDC. Load voltage is 24-280 VAC. Finger-safe design and LED status lamp. SPST normally open.			
AD-SSR230-22-ACR	\$52.00	PDF	Solid state DIN-rail mount relay with 30A contact rating. Coil voltage 90-280 VAC. Load voltage is 24-280 VAC. Finger-safe design and LED status lamp. SPST normally open.			
AD-SSR230-22-DCR	\$52.00	PDF	Solid state DIN-rail mount relay with 30A contact rating. Coil voltage 4-32 VDC. Load voltage is 24-280 VAC. Finger-safe design and LED status lamp. SPST normally open.			
AD-SSR610-22-ACR	\$46.00	PDF	Solid state DIN-rail mount relay with 10A contact rating. Coil voltage 90-280 VAC. Load voltage is 48-660 VAC. Finger-safe design and LED status lamp. SPST normally open.			
AD-SSR610-22-DCR	\$46.00	PDF	Solid state DIN-rail mount relay with 10A contact rating. Coil voltage 4-32 VDC. Load voltage is 48-660 VAC. Finger-safe design and LED status lamp. SPST normally open.			
AD-SSR630-22-ACR	\$57.00	PDF	Solid state DIN-rail mount relay with 30A contact rating. Coil voltage 90-280 VAC. Load voltage is 48-660 VAC. Finger-safe design and LED status lamp. SPST normally open.			
AD-SSR630-22-DCR	\$57.00	PDF	Solid state DIN-rail mount relay with 30A contact rating. Coil voltage 4-32 VDC. Load voltage is 48-660 VAC. Finger-safe design and LED status lamp. SPST normally open.			
AD-SSR245-45-ACZ	\$87.00	PDF	Solid state DIN-rail mount relay with 45A contact rating. Coil voltage 90-140 VAC. Load voltage is 24-280 VAC. Finger-safe design and LED status lamp. SPST normally open.	Zero Cross	Figure 2	
AD-SSR245-45-DCZ	\$86.00	PDF	Solid state DIN-rail mount relay with 45A contact rating. Coil voltage 3-32 VDC. Load voltage is 24-280 VAC. Finger-safe design and LED status lamp. SPST normally open.			
AD-SSR645-45-ACZ	\$88.00	PDF	Solid state DIN-rail mount relay with 45A contact rating. Coil voltage 90-140 VAC. Load voltage is 48-660 VAC. Finger-safe design and LED status lamp. SPST normally open.			
AD-SSR645-45-DCZ	\$88.00	PDF	Solid state DIN-rail mount relay with 45A contact rating. Coil voltage 3-32 VDC. Load voltage is 48-660 VAC. Finger-safe design and LED status lamp. SPST normally open.			
AD-SSR665-45-ACZ	\$77.00	PDF	Solid state DIN-rail mount relay with 65A contact rating. Coil voltage 90-140 VAC. Load voltage is 48-660 VAC. Finger-safe design and LED status lamp. SPST normally open.			
AD-SSR665-45-DCZ	\$77.00	PDF	Solid state DIN-rail mount relay with 65A contact rating. Coil voltage 3-32 VDC. Load voltage is 48-660 VAC. Finger-safe design and LED status lamp. SPST normally open.			
AD-70S2-04B*	\$23.50	NA	Solid state plug-in relay with 4A contact rating. Coil voltage is 3-30 VDC. Load voltage is 24-140 VAC. SPST normally open.			
AD-70S2-04C*	\$23.50	NA	Solid state plug-in relay with 4A contact rating. Coil voltage is 3-30 VDC. Load voltage is 24-280 VAC. SPST normally open.			
AD-70S2-04D*	\$23.50	NA	Solid state plug-in relay with 4A contact rating. Coil voltage is 3-30 VDC. Load voltage is 8-50 VAC. SPST normally open.			

*NOTE: See 78 Series Relays Socket dimensions.

AD Series Solid State Relay Specifications

Specifications																								
Part Number	AD-SSR245-45-DCZ	AD-SSR210-22-DCZ	AD-SSR230-22-DCZ	AD-SSR210-22-DCR	AD-SSR230-22-DCR	AD-SSR610-22-DCZ	AD-SSR630-22-DCZ	AD-SSR645-45-DCZ	AD-SSR665-45-DCZ	AD-SSR610-22-DCR	AD-SSR630-22-DCR	AD-SSR210-22-ACZ	AD-SSR230-22-ACZ	AD-SSR210-22-ACR	AD-SSR230-22-ACR	AD-SSR610-22-ACZ	AD-SSR630-22-ACZ	AD-SSR645-45-ACZ	AD-SSR610-22-ACR	AD-SSR630-22-ACR	AD-SSR245-45-ACZ	AD-SSR665-45-ACZ		
Input Characteristics																								
Control Voltage Range	3-32 VDC	4-32 VDC										90-280 VAC				90-140 VAC	90-280 VAC	90-140 VAC						
Typical Input Current	8-12 mA										2-4 mA													
Max. Turn-On Voltage	4VDC										90 Vrms													
Min. Turn-Off Voltage	1VDC										10 Vrms													
Output Characteristics																								
Output Type	SCR																							
Switching Type	Zero Cross		Random Switching		Zero Cross		Random Switching		Zero Cross		Random Switching		Zero Cross		Random Switching		Zero Cross							
Output Voltage	24-280 VAC				48-660 VAC				24-280 VAC				48-660 VAC				24-280 VAC		48-660 VAC					
Load Current Range	10-45A				65A		10-45A																65A	
Transient Over-Voltage	600Vpk				1200Vpk				600Vpk				1200Vpk				600Vpk		1200Vpk					
Max. Surge Current	10A: 120Apk; 30/45A: 625Apk; (at 16.6 ms)				625Apk (at 16.6 ms)				10A: 120Apk; 30/45A: 625Apk; (at 16.6 ms)				625Apk (at 16.6 ms)				10A: 120Apk; 30/45A: 625Apk; (at 16.6 ms)		625Apk (at 16.6 ms)					
Max. On-State Voltage Drop at Rated Current	1.6 Vpk																							
Max. I²T for Fusing (8.3 ms)	10A: 60 A2sec; 20A: 260 A2sec; 30/45A: 1620 A2sec				1620 A2sec				10A: 60 A2sec; 20A: 260 A2sec; 30/45A: 1620 A2sec				1620 A2sec				10A: 60 A2sec; 20A: 260 A2sec; 30/45A: 1620 A2sec		1620 A2sec					
Max. Off-State Leakage Current at Rated Current	10mA				1mA				10mA				1mA				10mA		1mA					
Max. Rate of Rise Off State Voltage (dv/dt)	500 V/us																							
Max Response Time (On and Off)	1/2 cycle																							
General Characteristics																								
Electrical Life	N/A for solid state relays																							
Operating Temperature Range	-40 to 80°C [-40 to 176°F] - derating applies																							
Storage Temperature Range	-40 to 125°C [-40 to 257°F]																							
Frequency	Input: no frequency limitation / output: snubber 48-63 Hz																							
Weight	10/20/30 A: 272g [9.6 oz]; 45A: 482g [17oz]																							
Input Indication	Green LED																							
Encapsulation	Thermally conductive epoxy																							
Input Terminal Screw Torque	10/20/30 A: 5.0-6.0 in-lb [0.6-0.7 N·m]; 45A: 5.0-6.0 in-lb [0.6-0.7 N·m]																							
Output Terminal Screw Torque	10/20/30 A: 5.0-6.0 in-lb [0.6-0.7 N·m]; 45A: 10.0-15.0 in-lb [1.1-1.7 N·m]																							
Mount Type	35mm DIN rail and panel mount																							
Max. Wire Size	8AWG																							
Agency Approvals *	E222847 UL Recognized, CE, CSA 2742910																							

* To obtain the most current agency approval information, see the Agency Compliance & Certifications Checklist section on the specific part number's web page.

AD Series Solid State Relay Specifications

Specifications			
Part Number	AD-70S2-04B	AD-70S2-04C	AD-70S2-04D
Input Characteristics			
Input Voltage Range	3 - 30 VDC		
Must Release Voltage	5VDC		
Typical Input Current	1 - 17 mA	1 - 6 mA	1 - 17 mA
Maximum Reverse Control Voltage	5VDC		
Output Characteristics			
Contact Rating	4A		
Contact Configuration	SPST-N.O.		
Output Voltage Range	24 - 140 VAC	24 - 280 VAC	8 - 50 VAC
Switching Type	Zero Cross		
Switching Device	Triac		
Maximum Rate of Rise Off State Voltage (dv/dt)	300 V/us		
Min. Load Current to Maintain On	75mA		
Non-Repetitive Surge Current (1 cycle)	60A		
Max. Off Sate Leakage Current (rms)	6mA	6mA	10mA
Minimum Peak Blocking Voltage	400VAC	600VAC	200VAC
Typical On State Voltage Drop (rms)	1.6 VAC		
General Characteristics			
Mounting Type	Socket Mount		
Thermal Resistance (Junction to Case)	4 °C/W		
Dielectric Strength, Terminals to Chassis	3000 VAC		
Ambient Air Temperature around the Device - Storage	-40 to +125 °C		
Ambient Air Temperature around the Device - Operation	-40 to +100 °C		
Agency Approvals	UL (E258297), CSA (040787), RoHs		

Wiring Diagrams

Figure 1
AD-SSRxxx-xx wiring diagram

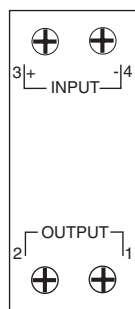
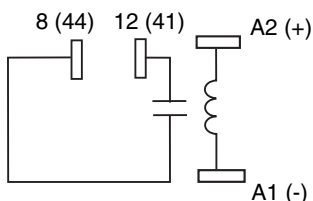


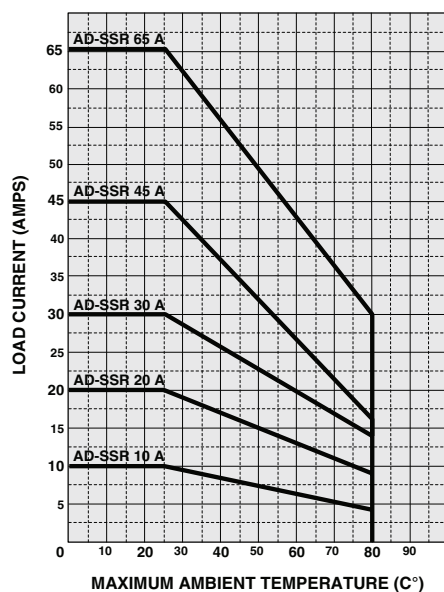
Figure 2
AD-70S2-xx wiring diagram



SSR Series Derating Charts

Derating Charts

AD-SSR Series derating chart



AD-70S2 Series derating charts

Maximum Continuous Current
vs. Ambient Temperature

