

Connection Cables - Sensor and Signal

M8 A-coded Cable to Pigtail

- Industry-standard axial and right-angle M8 screw-lock connectors with open leads
- Cables listed can be used with patch cables
- 1.5m [4.9 ft], 2m [6.5 ft], 5m [16.4 ft], 7m [23 ft], and 10m [32.8 ft] cable lengths
- PVC (polyvinyl chloride) jacketed cable for general use and chemical washdown applications, ex. food & beverage industry
- PUR (polyurethane) jacketed cable for applications with exposure to oil and dynamic applications requiring more flexibility
- PP (polypropylene) wire insulation for low temperature applications



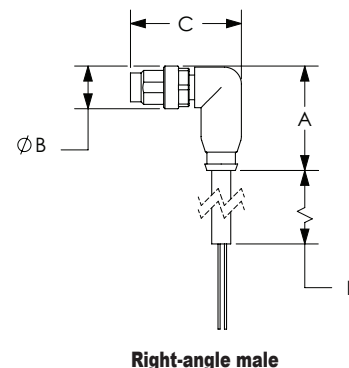
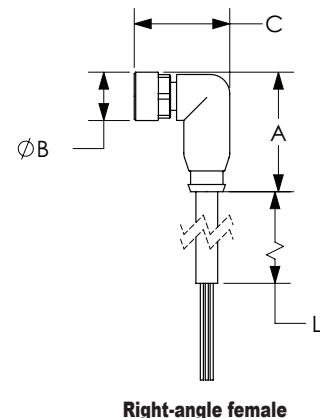
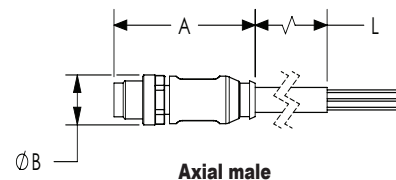
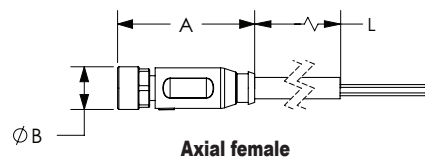
Please note: \$US prices shown
For current \$AUD visit www.directautomation.com.au

M8 A-coded Cable to Pigtail

Part Number	Price	Number of Wires	Connector	Cable Jacket/ Wire Insulation Material	Jacket Color	Dimensions								
						A	B	C	L					
						mm			m [ft]					
CD08-0A-020-A1		3	Axial female	PVC/PVC	Gray	32	10	-	2					
CD08-0A-020-C1			Right-angle female			25	10	20	[6.5]					
CD08-0A-050-A1			Axial female	PUR/PVC	Black	32	10	-	5					
CD08-0A-050-C1			Right-angle female			25	10	20		[16.4]				
CD08-0C-050-A1			Axial female	PUR/PVC	Black	32	10	-	5					
CD08-0C-050-A1-A			Axial female	PUR/PP		32	10	-		[16.4]				
CD08-0C-050-C1			Right-angle female	PUR/PVC	Black	25	10	20	5					
CD08-0C-050-C1-A			Right-angle female	PUR/PP		25	10	20		[16.4]				
CD08-0A-070-A1			Axial female	PVC/PVC	Gray	32	10	-	7					
CD08-0A-070-C1			Right-angle female			25	10	20		[23]				
7000-08001-0200200			Axial male	PUR/PVC	Yellow	Yellow	39	10	-	10				
7000-08001-0300200			Axial male	PUR/PP			39	10	-		[6.5]			
7000-08021-0200200			Right-angle male	PUR/PVC			25	10	26		10			
7000-08021-0300200			Right-angle male	PUR/PP			25	10	26			[32.8]		
7000-08001-0300500			Axial male	PUR/PP			39	10	-		10			
7000-08021-0200500			Right-angle male	PUR/PVC			25	10	26			[32.8]		
7000-08021-0300500			Right-angle male	PUR/PP			25	10	26		10			
7000-08001-0201000			Axial male	PUR/PVC			39	10	-			[32.8]		
7000-08001-0301000			Axial male	PUR/PP			39	10	-		10			
7000-08021-0201000			Right-angle male	PUR/PVC			25	10	26			[32.8]		
7000-08021-0301000			Right-angle male	PUR/PP			25	10	26		10			
7000-08001-2100200			Axial male	PVC/PVC			Gray	39	10			-	2	
7000-08021-2100200			Right-angle male					25	10		26	[6.5]		
7000-08001-2100500			Axial male	PVC/PVC			Gray	39	10		-	5		
7000-08021-2100500		Right-angle male	25					10	26		[16.4]			
7000-08001-2101000		Axial male	PVC/PVC	Gray			39	10	-		10			
7000-08021-2101000		Right-angle male					25	10	26			[32.8]		
7000-08041-0200200		Axial female	PUR/PVC	Yellow			Yellow	32	10		-	5		
7000-08041-0300200		Axial female	PUR/PP					32	10		-		[16.4]	
7000-08081-0200200		Right-angle female	PUR/PVC					25	10		20		2	
7000-08081-0300200		Right-angle female	PUR/PP					25	10		20			[6.5]
7000-08041-0200500		Axial female	PUR/PVC					Yellow	32		10		-	5
7000-08041-0300500		Axial female	PUR/PP						32		10		-	
7000-08081-0200500		Right-angle female	PUR/PVC					Yellow	25		10		20	5
7000-08081-0300500		Right-angle female	PUR/PP		25	10			20	[16.4]				

Continued on next page.

Dimensions



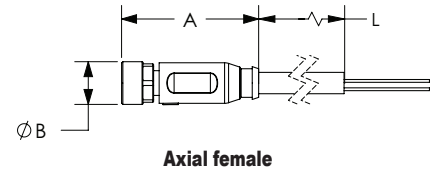
See our website: www.AutomationDirect.com for complete engineering drawings.

Connection Cables - Sensor and Signal

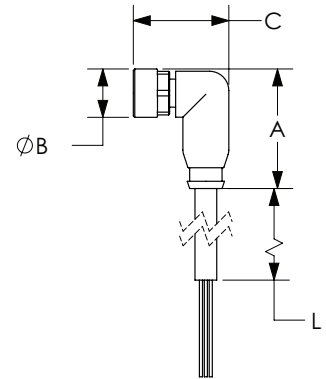
M8 A-coded Cable to Pigtail (continued)

M8 A-coded Cable to Pigtail											
Part Number	Price	Number of Wires	Connector	Cable Jacket/Wire Insulation Material	Jacket Color	Dimensions					
						A	B	C	L		
						mm			m [ft]		
7000-08041-0200700		3	Axial female	PUR/PVC	Yellow	32	10	-	7 [22.9]		
7000-08041-0300700			Axial female	PUR/PP		32	10	-			
7000-08081-0200700			Right-angle female	PUR/PVC		25	10	20			
7000-08081-0300700			Right-angle female	PUR/PP		25	10	20			
7000-08041-2100500			Axial female	PVC/PVC	Gray	32	10	-	5 [16.4]		
7000-08081-2100500			Right-angle female			25	10	20			
7000-08061-0210200		4	Axial female	PUR-PVC/PVC	Yellow	32	10	-	2 [6.5]		
7000-08061-0310200			Axial female	PUR/PP		32	10	-			
7000-08101-0210200			Right-angle female	PUR-PVC/PVC		25	10	20			
7000-08101-0310200			Right-angle female	PUR/PP		25	10	20			
7000-08061-0210500			Axial female	PUR-PVC/PVC		32	10	-	5 [16.4]		
7000-08061-0310500			Axial female	PUR/PP		32	10	-			
7000-08101-0210500			Right-angle female	PUR-PVC/PVC	25	10	20				
7000-08101-0310500			Right-angle female	PUR/PP	25	10	20				
7000-08061-0211000			Axial female	PUR-PVC/PVC	Black	32	10	-	10 [32.8]		
7000-08061-0311000			Axial female	PUR/PP		32	10	-			
7000-08101-0211000			Right-angle female	PUR-PVC/PVC		25	10	20			
7000-08101-0311000			Right-angle female	PUR/PP		25	10	20			
CD08-0G-020-A1			Axial female	PVC/PVC		Gray	32	10	-	2 [6.5]	
CD08-0W-020-C1			Right-angle female				25	10	20		
CD08-0G-050-A1			Axial female		32		10	-	5 [16.4]		
CD08-0W-050-C1			Right-angle female		25		10	20			
CD08-0G-100-A1			Axial female		32		10	-		10 [32.8]	
CD08-0W-100-C1			Right-angle female		25		10	20			
7000-08061-2110200		Axial female	PUR/PVC	Yellow	32	10	-	2 [6.5]			
7000-08101-2110200		Right-angle female			25	10	20				
7000-08061-2110500		Axial female			32	10	-		5 [16.4]		
7000-08101-2110500		Right-angle female			25	10	20				
7000-08061-2111000		Axial female			Black	Gray	32	10		-	10 [32.8]
7000-08101-2111000		Right-angle female					25	10	20		
7000-08941-6950150		Axial female		PUR/PP			Black	34	10	-	
7000-08951-6950150		Right-angle female						28	10	21	
7000-08941-6950500		Axial female						34	10	-	5 [16.4]
7000-08951-6950500		Right-angle female						28	10	21	
7000-08941-6951000		Axial female			34	10		-	10 [32.8]		
7000-08951-6951000		Right-angle female			28	10		21			

Dimensions



Axial female



Right-angle female

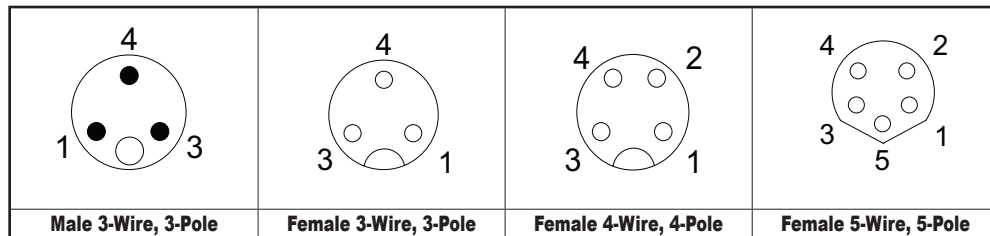
See our website: www.AutomationDirect.com for complete engineering drawings.

Connection Cables - Sensor and Signal

M8 A-coded Cable to Pigtail Specifications					
Model	CD08 Series			7000 Series	
Type	3-Wire, 3-Pole	4-Wire, 4-Pole	3-Wire, 3-Pole	4-Wire, 4-Pole	5-Wire, 5-Pole
Max Voltage	50VAC / 60VDC				30 VAC/VDC
Max Voltage - UL Rating	N/A		30 VAC/VDC		
Max Current Per Contact	4A				3A
Protection Degree	IP65 / IP66K / IP67				IP67
Nut Material	Male threads are nickel plated brass; female threads are nickel plated die cast zinc				
Cable Jacket/Wire Insulation Material	PUR-PVC/PVC, PVC/PVC, PUR/PVC, or PUR/PP				PUR/PP
Contacts Material	Copper Alloy				
Tightening Torque	≤ 0.4 N·m [≤ 0.34 ft·lb]				
Conductors Cross Section	0.25 mm ² [24AWG]				
Ø Outer Cable For PUR/PVC or PVC/PVC or PUR-PVC/PVC	3-Wire 4.5 mm [0.18 in] / 4-Wire 4.8 mm [0.19 in]				
Ø Outer Cable For PUR/PP	3-Wire 4.1 mm [0.16 in] / 4-Wire 4.5 mm [0.18 in]			5-Wire 4.7 mm [0.19 in]	
Temperature Range - Stationary Use	PUR-PVC/PVC, PVC/PVC and PUR/PVC -30 to 80°C [-22 to 176°F]; PUR/PP -40 to 80°C [-40 to 176°F]				
Temperature Range - Flexible Use	PUR-PVC/PVC, PVC/PVC and PUR/PVC -5 to 80°C [23 to 176°F]; PUR/PP -25 to 80°C [-13 to 176°F]				
Min Bend Radius	Stationary use: 5 x cable diameter; Flexible use: 10 x cable diameter				
Approvals*	CE, cCSAus		cULus, CE, UKCA, cCSAus		cURus

*To obtain the most current agency approval information, see the Agency Compliance & Certifications Checklist section on the specific part number's web page.

Contact Diagrams



Wiring Diagrams

